

# BMA系列射频同轴连接器



## 概述

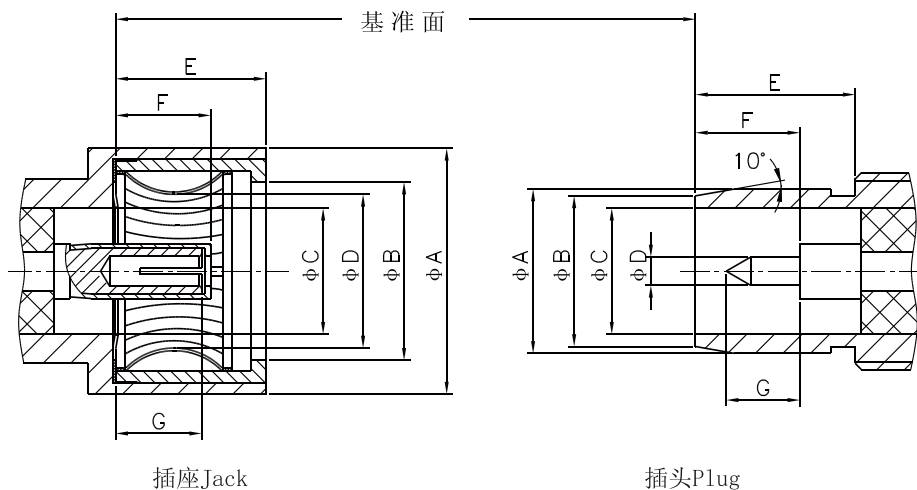
BMA系列射频同轴连接器可盲插对接，是SMA系列连接器的推入式变形，具有体积小、使用频率高、接触可靠方便，特别适用于机箱、机柜的盲插合，有利于各种设备、整机系统的模块化。

BMA系列射频同轴连接器适用标准为GB/T 11313.33、IEC 61169-33。

## 主要技术特性

温度范围 Temperature range		-55℃ ~ +155℃	工作电压 Voltage rating	250V (AC)
特性阻抗 Characteristic impedance		50Ω	绝缘电阻 Insulation resistance	≥5000MΩ
频率范围 Frequency range		0GHz~18GHz	介质耐压 Dielectric withstanding voltage	750V (AC)
接触电阻 Contact resistance	中心导体 Center conductor	≤0.003Ω	电压驻波比 VSWR	≤1.15+0.014F
	外导体 Outer conductor	≤0.002Ω	寿命 Durability	1000 Cycles

头部配合尺寸 INTERFACE MATING DIMENSIONS



插座Jack

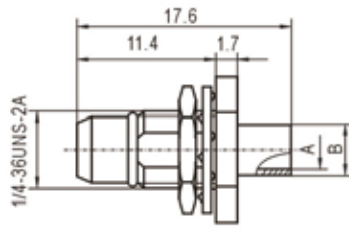
插头Plug

JACK (mm)			PLUG (mm)		
Symbol	MIN	MAX	Symbol	MIN	MAX
A	7.37	-	A	5.309	5.359
B	5.72	-	B	4.88 (标称值)	
C	4.09 (标称值)		C	4.09 (标称值)	
D	满足电气和机械性能要求		D	0.9017	0.9398
E	-	5.029	E	5.055	-
F	3.048	3.225	F	3.252	3.429
G	2.845	-	G	2.159	2.413

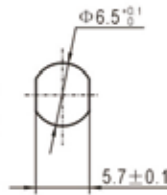
## 半刚半柔电缆连接器



BMA-JYB2



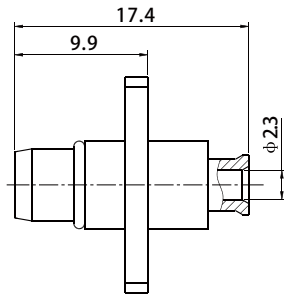
安装开孔尺寸  
Mounting hole



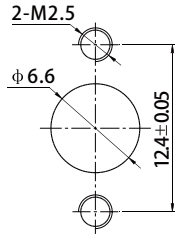
Type	A	B	Cable type
BMA-JYB2	Φ2.3	Φ3.3	SFT-50-2-1
BMA-JYB3	Φ3.7	4.6	SFT-50-3-1
BMA-JYB3G	Φ3.7	4.6	SFT-50-3-1



BMA-JFB2



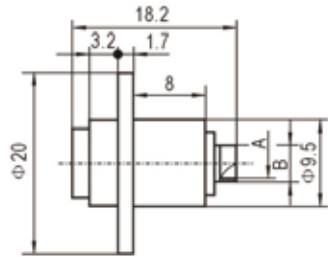
安装开孔尺寸  
Mounting hole



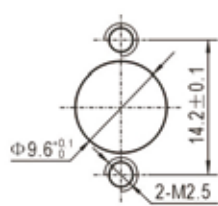
Type	Cable type
BMA-JFB2	SFT-50-2-1 SM86



BMA-KFB2等



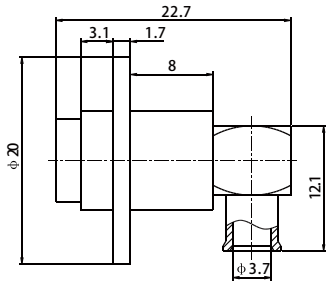
安装开孔尺寸  
Mounting hole



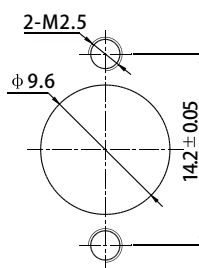
Type	A	B	Cable type
BMA-KFB2	Φ2.3	Φ3.3	SFT-50-2-1
BMA-KFB3 BMA-KFB3G	Φ3.7	4.6	SFT-50-3-1



BMA-KWFB3



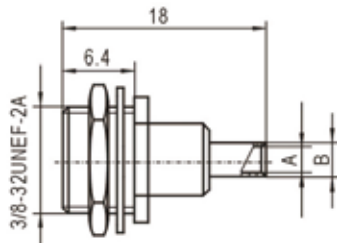
安装开孔尺寸  
Mounting hole



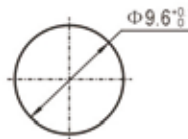
Type	Cable type
BMA-KWFB3	SFT-50-3-1 SM141



BMA-KYB2G等



安装开孔尺寸  
Mounting hole



Type	A	B	Cable type
BMA-KYB2G	Φ2.3	Φ3.3	SFT-50-2-1
BMA-KYB3G	Φ3.7	4.6	SFT-50-3-1

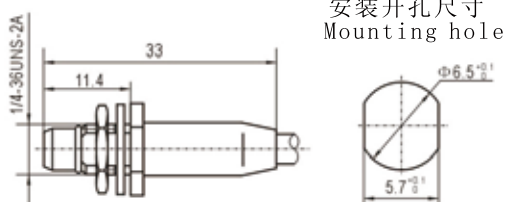
# BMA系列射频同轴连接器



## 软电缆连接器



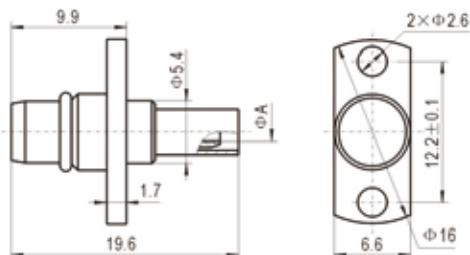
BMA-JY3Y等



Type	Cable type
BMA-JY3Y	SFF-50-1.5-1
BMA-JY4Y	SFF-50-2-1
BMA-JY5Y	SFF-50-3-1



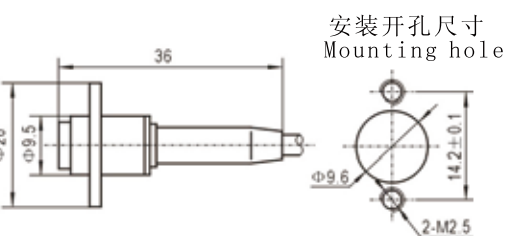
BMA-JF3Y等



Type	A	Cable type
BMA-JF2Y	1	SFF-50-1
BMA-JF3Y	1.6	SFF-50-1.5-1



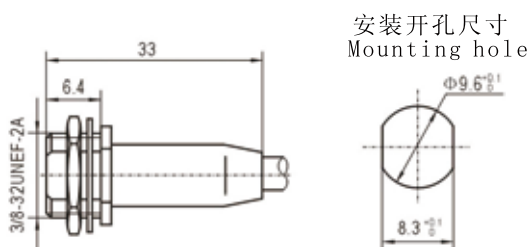
BMA-KF3Y等



Type	Cable type
BMA-KF3Y	SFF-50-1.5-1
BMA-KF4Y	SFF-50-2-1
BMA-KF5Y	SFF-50-3-1



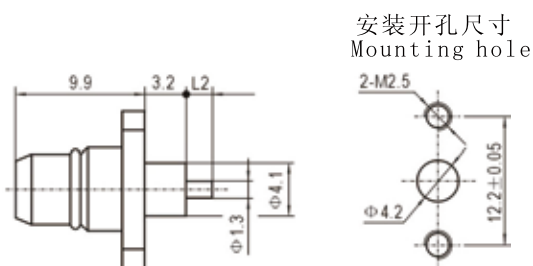
BMA-KY3Y



## 面板连接器



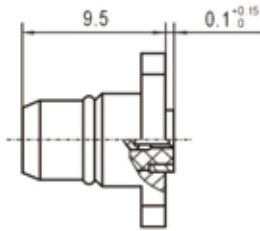
BMA-JFD等



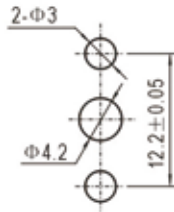
Type	L2
BMA-JFD	2.0
BMA-JFDG	2.0
BMA-JFD6G	2.3



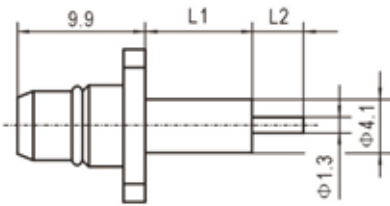
BMA-JFD1



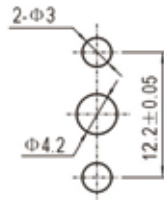
安装开孔尺寸  
Mounting hole



BMA-JFD2等



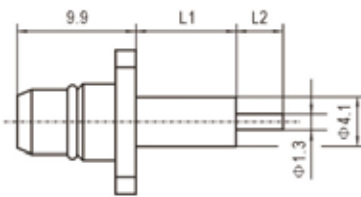
安装开孔尺寸  
Mounting hole



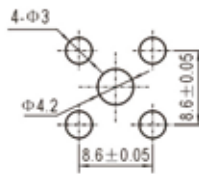
Type	L1	L2
BMA-JFD2	8.4	4.0
BMA-JFD2G	8.4	4.0
BMA-JFD5G	8.0	2.3
BMA-JFD6	5.0	2.0
BMA-JFD9G	8.4	2.0
BMA-JFD9	8.4	2.0
BMA-JFD12	4.0	3.0
BMA-JFD13	3.0	3.0



BMA-JFD3等



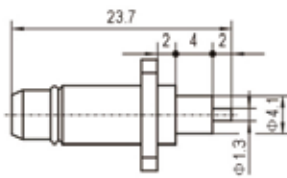
安装开孔尺寸  
Mounting hole



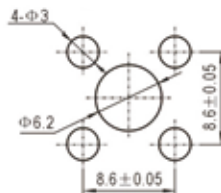
Type	L1	L2
BMA-JFD3	8.4	4.0
BMA-JFD3G	8.4	4.0
BMA-JFD8	4.0	2.0
BMA-JFD8G	4.0	2.0
BMA-JFD10	8.4	3.0



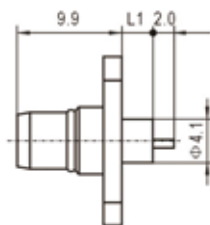
BMA-JFD4



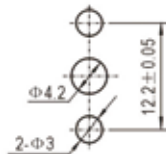
安装开孔尺寸  
Mounting hole



BMA-JFD11G等



安装开孔尺寸  
Mounting hole

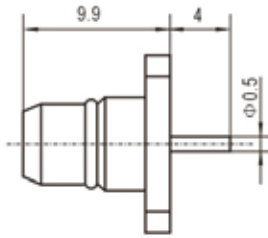


Type	L1
BMA-JFD11G	5.0
BMA-JFD17	3.0
BMA-JFD17G	3.0

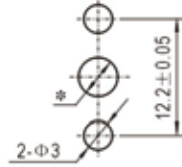
# BMA系列射频同轴连接器



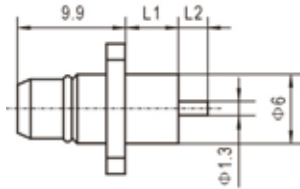
BMA-JFD14



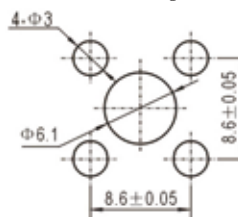
安装开孔尺寸  
Mounting hole



BMA-JFD15等



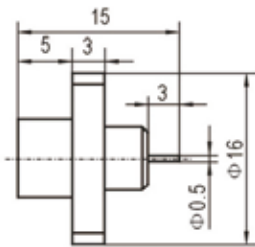
安装开孔尺寸  
Mounting hole



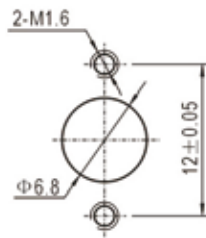
Type	L1	L2
BMA-JFD15G	4.0	2.0
BMA-JFD16G	3.2	1.5



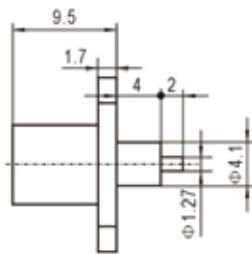
BMA-KFD1



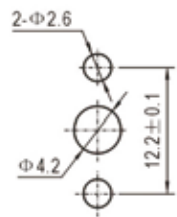
安装开孔尺寸  
Mounting hole



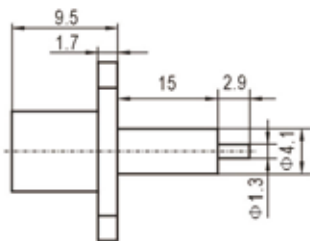
BMA-KFD2



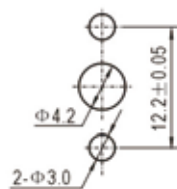
安装开孔尺寸  
Mounting hole



BMA-KFD3G

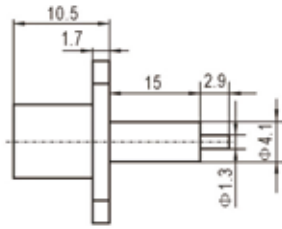


安装开孔尺寸  
Mounting hole





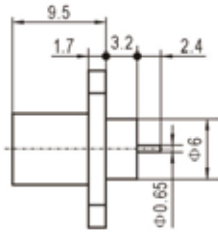
BMA-KFD4G



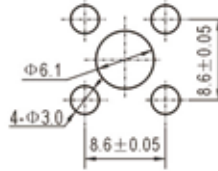
安装开孔尺寸  
Mounting hole



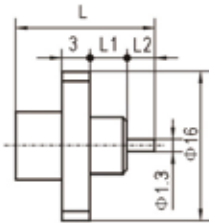
BMA-KFD6



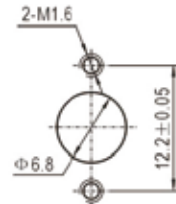
安装开孔尺寸  
Mounting hole



BMA-KFD7等



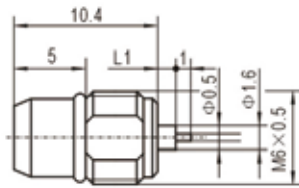
安装开孔尺寸  
Mounting hole



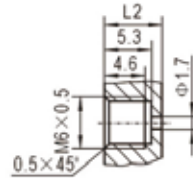
Type	L	L1	L2
BMA-KFD7	12.0	4.0	0.7
BMA-KFD8	11.0	2.5	0.5



BMA-JYD等



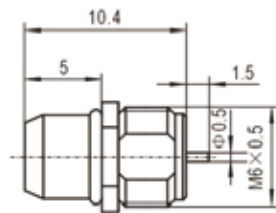
安装开孔尺寸  
Mounting hole



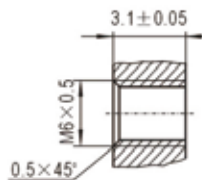
Type	L1	L2
BMA-JYD	1.3	6.6
BMA-JYDG	1.3	6.6
BMA-JYD2G	1.0	6.4



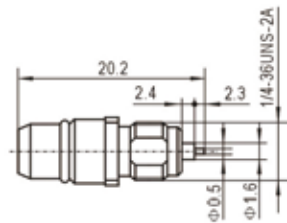
BMA-JYD1



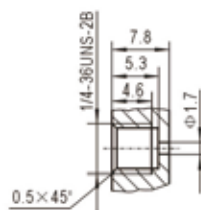
安装开孔尺寸  
Mounting hole



BMA-JYD3G



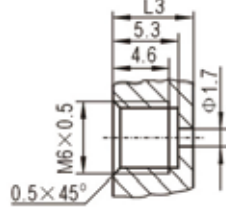
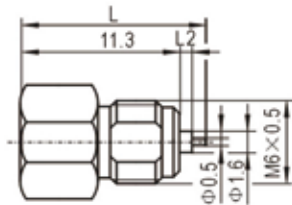
安装开孔尺寸  
Mounting hole



# BMA系列射频同轴连接器



BMA-KYD等

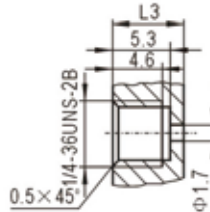
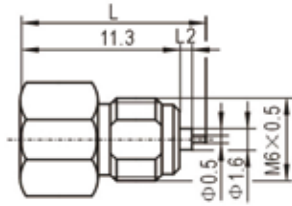


安装开孔尺寸  
Mounting hole

Type	L	L1	L2
BMA-KYD	13.6	1.3	6.6
BMA-KYD2G	13.2	1.0	6.4



BMA-KYD1等



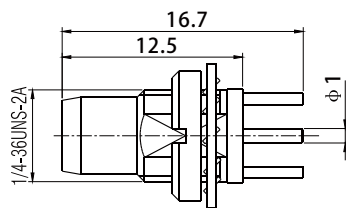
安装开孔尺寸  
Mounting hole

Type	L	L1	L2	L2
BMA-KYD1	13.6	11.3	1.3	6.6
BMA-KYD3G	15.4	11.4	1.6	7.0
BMA-KYD3G	15.4	11.4	2.1	7.5

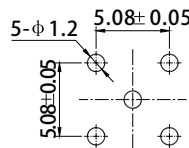
## 印制电路板连接器



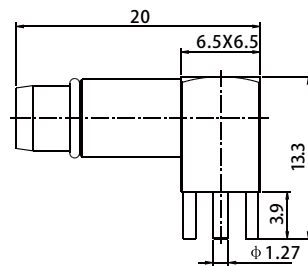
BMA-JYHD1



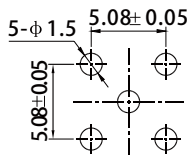
安装开孔尺寸  
Mounting hole



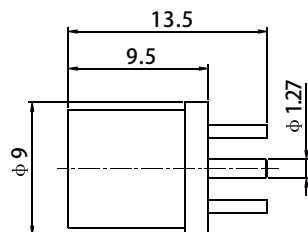
BMA-JWHD



安装开孔尺寸  
Mounting hole



BMA-KHD



安装开孔尺寸  
Mounting hole

