

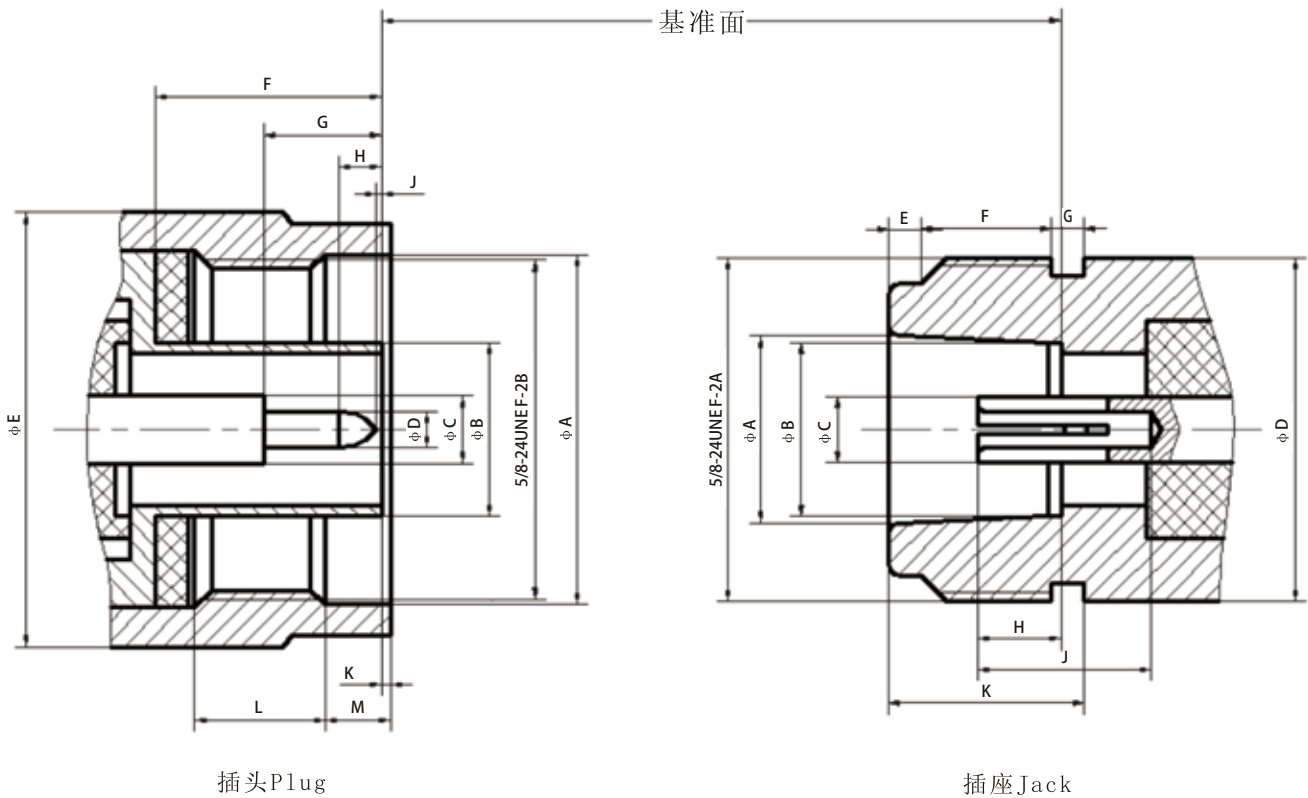
## 概述

N系列连接器为螺纹连接的中小功率连接器，具有抗振性强、可靠性高、机械电气性能优良等优点，符合 GJB 681A-2002、MIL-C-39012、IEC 60169-16 国际标准。广泛用于振动和恶劣环境条件下的无线电设备和仪器中连接射频同轴电缆用。

## 主要技术特性

温度范围 Temperature range	-55℃~+155℃	绝缘电阻 Insulation resistance	≥5000MΩ
特性阻抗 Characteristic impedance	50Ω	介质耐压 Dielectric withstanding voltage	2500V
频率范围 Frequency range	0GHz~11GHz	插入力 Insertion force	≤8.9N
工作电压 Voltage rating	1000V	拔出力 Withdrawal force	≥0.55N
接触电阻 Contact resistance	中心导体 Center conductor	电压驻波比 VSWR	≤1.30
	外导体 Outer conductor	寿命 Durability	500 Cycles
	≤0.001Ω		
	≤0.0002Ω		

## 头部配合尺寸 INTERF ACE MATING DIMENSIONS

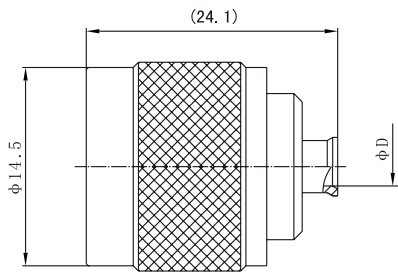


# N系列射频同轴连接器



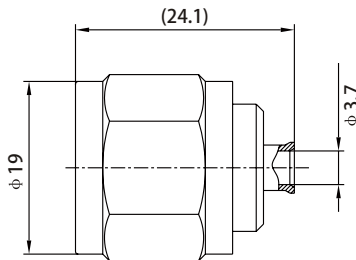
PLUG (mm)			JACK (mm)		
Symbol	MIN	MAX	Symbol	MIN	MAX
A	16.00	-	A	8.53	8.74
B	-	8.38	B	8.03	8.13
C	3.00	3.15	C	3.00	3.15
D	1.60	1.68	D	-	15.93
E	-	21.00	E	1.19	1.96
F	10.11	10.46	F	4.37	5.13
G	5.33	5.84	G	1.19	1.96
H	2.79	3.56	H	4.75	5.26
J	0.08	-	J	5.33	-
K	0.41	1.52	K	9.04	9.19
L	4.50	-			
M	4.01	4.27			

## 电缆连接器



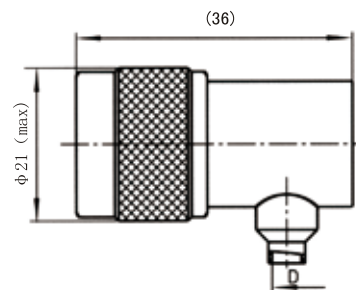
Type	D	Cable Type
N-JB2	Φ2.2	SFT-50-2-1
N-JB3	Φ3.6	SFT-50-3-1
N-JB5	Φ6.1	SFT-50-5-2

N-JB2等



Type	Cable type
N-JB3A	SFT-50-3-1

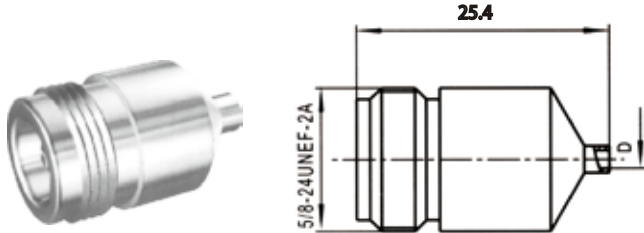
N-JB3A



Type	D	Cable Type
N-JWB2	Φ2.2	SFT-50-2-1
N-JWB3	Φ3.6	SFT-50-3-1

N-JWB2等

# N系列射频同轴连接器

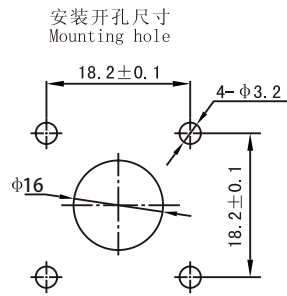


N-KB2等

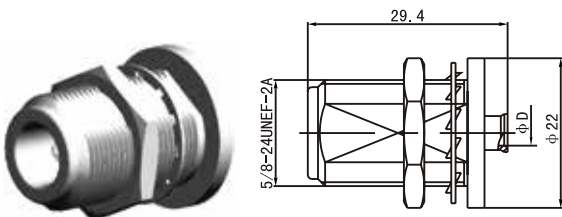
Type	D	Cable Type
N-KB2	Φ2.2	SFT-50-2-1
N-KB3	Φ3.6	SFT-50-3-1



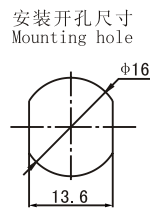
N-KFB2等



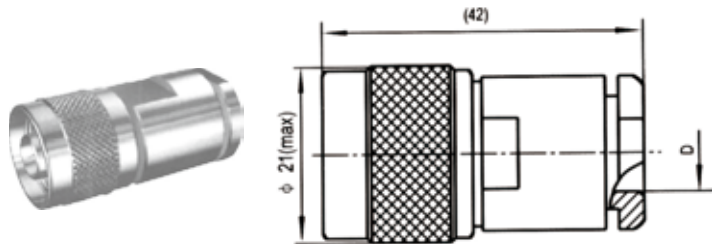
Type	D	Cable type
N-KFB2	Φ2.2	SFT-50-2-1
N-KFB3	Φ3.6	SFT-50-3-1



N-KYB2等



Type	D	Cable Type
N-KYB2	Φ2.2	SFT-50-2-1
N-KYB3	Φ3.6	SFT-50-3-1



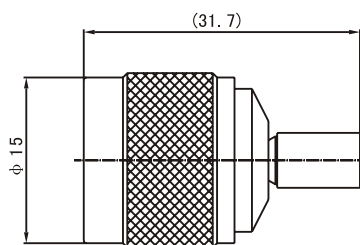
N-J4等

Type	D	Cable Type	Notes
N-J4	Φ4.2	SYV-50-2-2	
N-J5	Φ5.5	SYV-50-3	
N-J6	Φ10	SYV-50-5	
N-J7	Φ10.5	SYV-50-7-1	
N-J7-S	Φ10.5	SYV-50-7-1	壳体材料为不锈钢
N-J8	Φ11.5	SYV-50-7-2	
N-J27	Φ7.4	SYV-50-5-1	
N-J28	Φ8.1	SYV-50-5-2	

# N系列射频同轴连接器



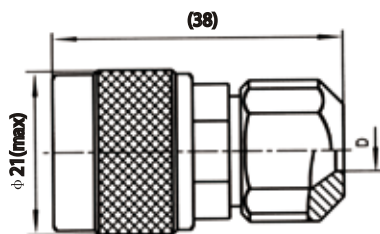
N-J3Y等



Type	Cable Type
N-J3Y	SYV-50-2-1 SFF-50-1.5-1
N-J4Y	SYV-50-2-2 SFF-50-2-2
N-J5Y	SYV-50-3



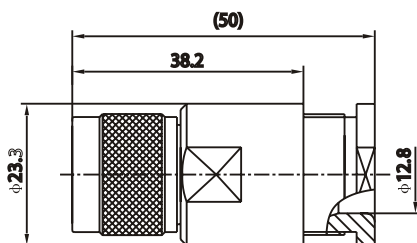
N-J3A等



Type	D	Cable Type
N-J3A	φ3	SYV-50-2-1 SFF-50-1.5-1
N-J4A	φ4.2	SYV-50-2-2 SFF-50-2-2
N-J5A	φ5.5	SYV-50-3
N-J6A	φ10.0	SYV-50-5
N-J7A	φ10.5	SYV-50-7-1
N-J8A	φ11.5	SYV-50-7-2
N-J27A	φ7.3	SYV-50-5-1



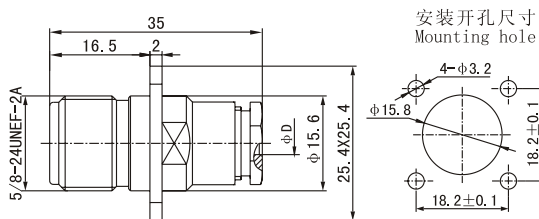
N-J9A



Type	Cable type
N-J9A	SYV-50-9



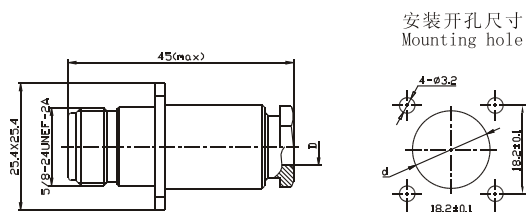
N-KF5-1等



Type	D	Cable type
N-KF3	Φ3	SYV-50-2-1 SFF-50-1.5-1
N-KF4	Φ4.2	SYV-50-2-2 SFF-50-2-2
N-KF5-1	Φ5.5	SYV-50-3

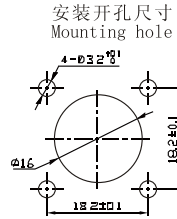
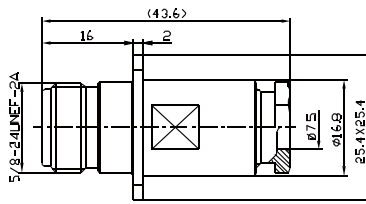


N-KF6等

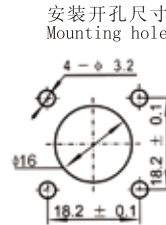
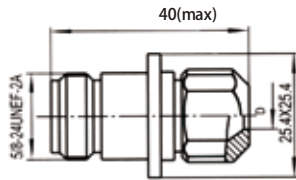


Type	D	d	Cable type
N-KF6	φ10.0	φ19.5	SYV-50-5-1/2
N-KF7	φ10.5	φ16	SYV-50-7-1
N-KF8	φ11.5	φ19.5	SYV-50-7-2

# N系列射频同轴连接器

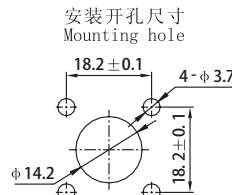
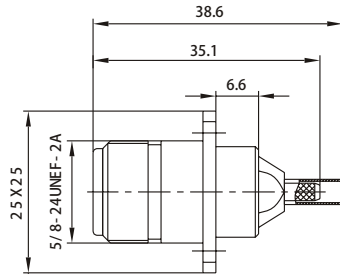
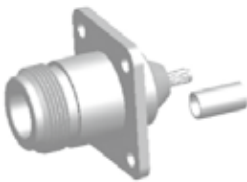


Type	Cable type
N-KF27	SYV-50-5-1



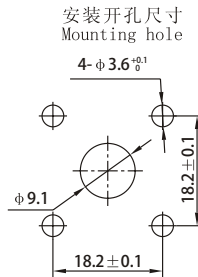
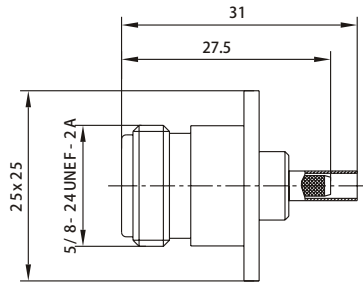
Type	D	Cable Type
N-KF3A	Φ3	SYV-50-2-1 SFF-50-1.5-1
N-KF4A	Φ4.2	SYV-50-2-2 SFF-50-2-2
N-KF5A	Φ5.5	SYV-50-3
N-KF6A	Φ10.0	SYV-50-5
N-KF7A	Φ10.5	SYV-50-7-1
N-KF8A	Φ11.5	SYV-50-7-2
N-KF27A	Φ7.4	SYV-50-5-1
N-KF28A	Φ8.1	SYV-50-5-2

N-KF3A等



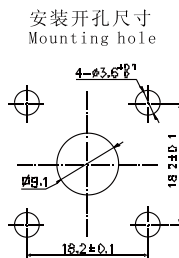
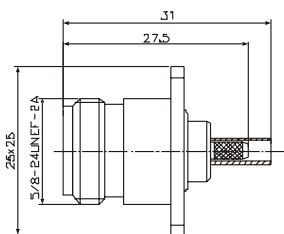
Type	Cable type
N-KF3Y	SYV-50-2-1 SFF-50-1.5-1

N-KF3Y



Type	Cable type
N-KF3Y-1	SYV-50-2-1 SFF-50-1.5-1

N-KF3Y-1



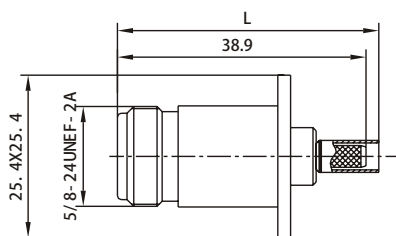
Type	Cable type
N(M)-KF3Y-2	SYV-50-2-1 SFF-50-1.5-1

N(M)-KF3Y-2

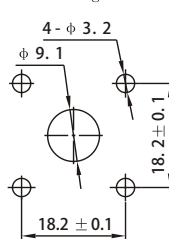
# N系列射频同轴连接器



N-KF4Y



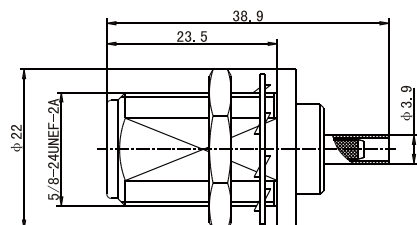
安装开孔尺寸  
Mounting hole



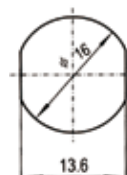
Type	L	Cable type
N-KF4Y	40.9	SFF-50-2-2 SYV-50-2-2
N-KF5Y	41.4	SYV-50-3 RG58C/U
N-KF27Y	41.4	SYV-50-2-1



N-KY3Y等



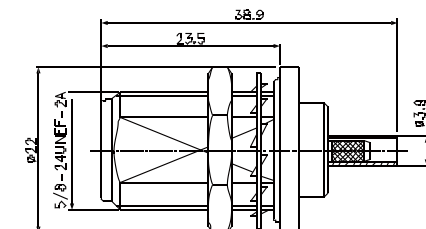
安装开孔尺寸  
Mounting hole



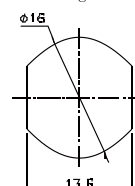
Type	Cable type
N-KY3Y	SYV-50-2-1 SFF-50-1.5-1



N(M)-KY3Y



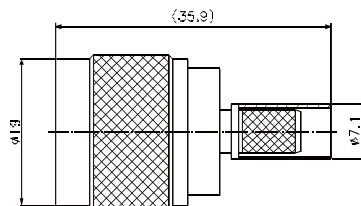
安装开孔尺寸  
Mounting hole



Type	Cable type
N(M)-KY3Y	SYV-50-2-1 SFF-50-1.5-1



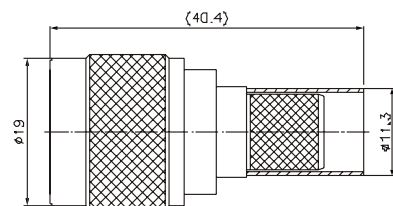
N-J240Y



Type	Cable type
N-J240Y	LMR-240/UF



N-J400Y

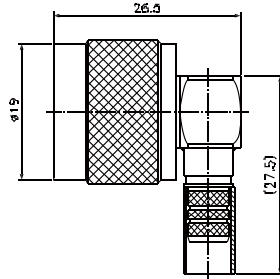


Type	Cable type
N-J400Y	LMR-400/UF

# N系列射频同轴连接器



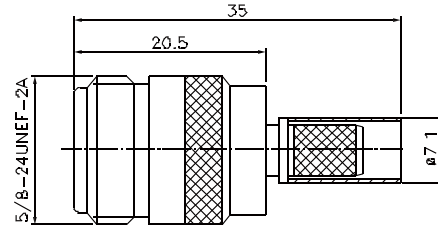
N-JW240Y



Type	Cable type
N-JW240Y	LMR-240/UF



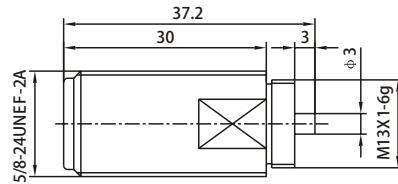
N-K240Y



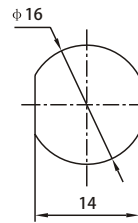
Type	Cable type
N-K240Y	LMR-240/UF



N-KYD



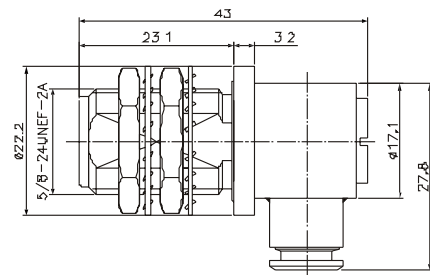
安装开孔尺寸  
Mounting hole



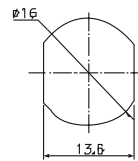
## 玻璃烧结连接器



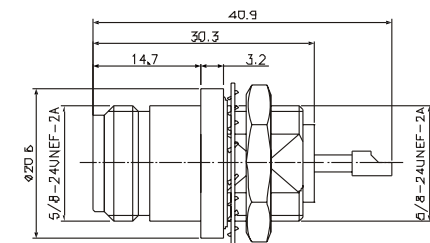
N(B)-KWY5-1



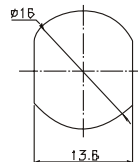
安装开孔尺寸  
Mounting hole



N(B)-50KY-1



安装开孔尺寸  
Mounting hole



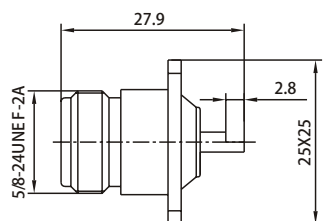
# N系列射频同轴连接器



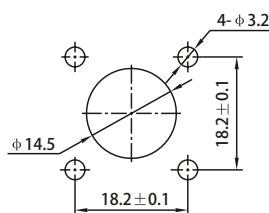
## 面板连接器



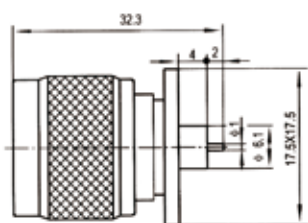
N-50KF



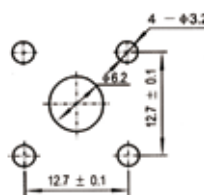
安装开孔尺寸  
Mounting hole



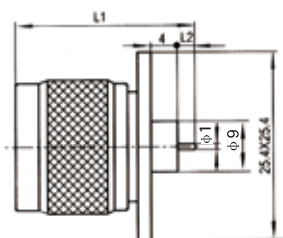
N-50JFD



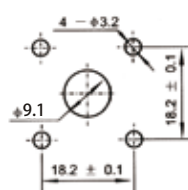
安装开孔尺寸  
Mounting hole



N-50JFD1等



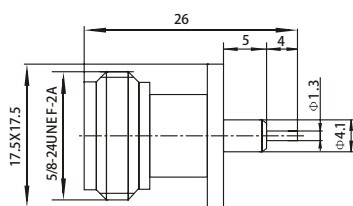
安装开孔尺寸  
Mounting hole



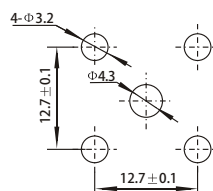
Type	L1	L2
N-50JFD1	26.2	1.8
N-50JFD2	29.9	5.5



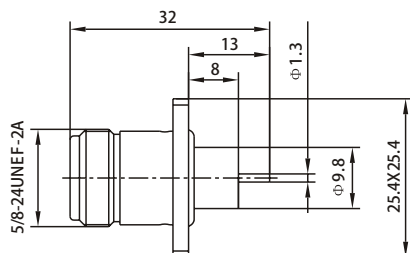
N-50KFD1



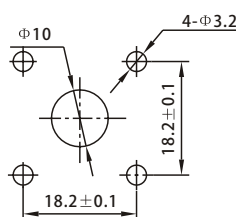
安装开孔尺寸  
Mounting hole



N(M)-50KFD1A



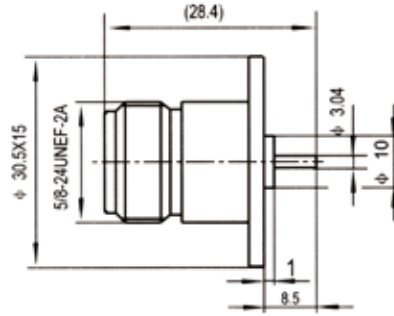
安装开孔尺寸  
Mounting hole



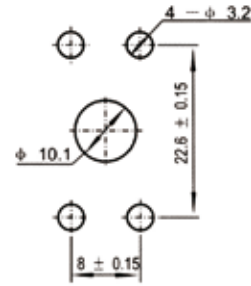




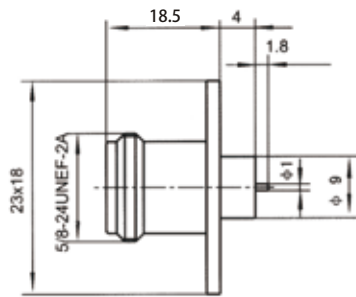
N-50KFD8



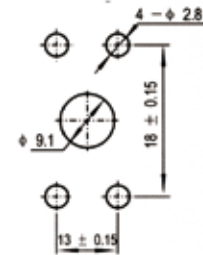
安装开孔尺寸  
Mounting hole



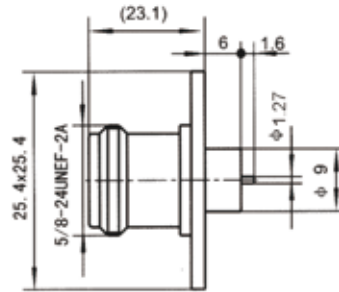
N-50KFD19



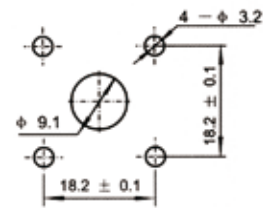
安装开孔尺寸  
Mounting hole



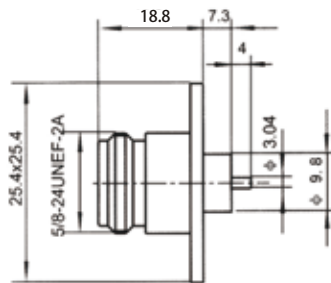
N-50KFD20



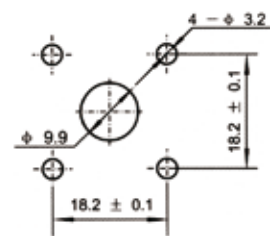
安装开孔尺寸  
Mounting hole



N-50KFD21



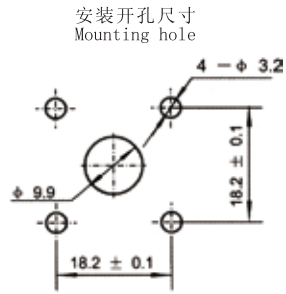
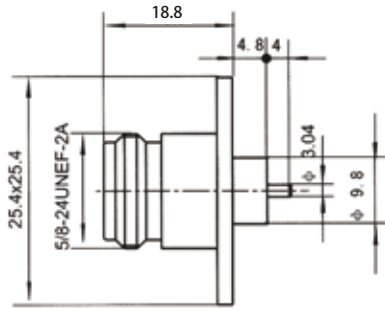
安装开孔尺寸  
Mounting hole



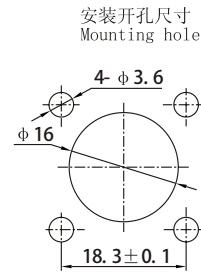
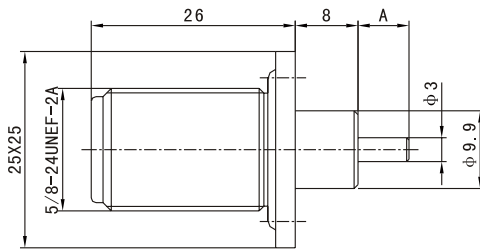
# N系列射频同轴连接器



N-50KFD22



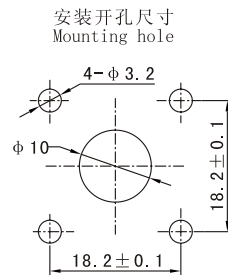
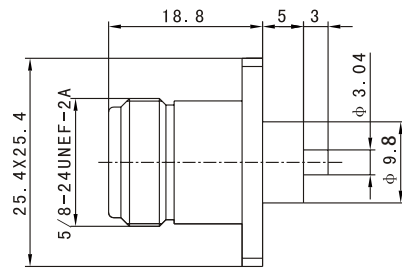
N-50KFD23



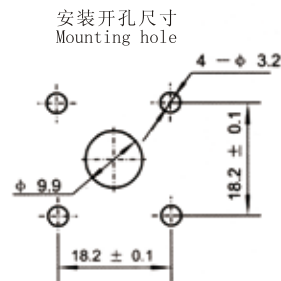
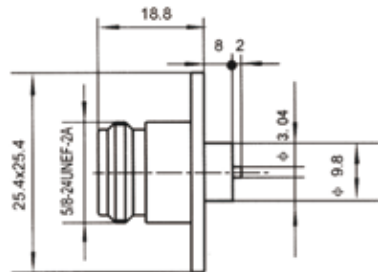
Type	A
N-50KFD23	6.5
N-50KFD24	21.5



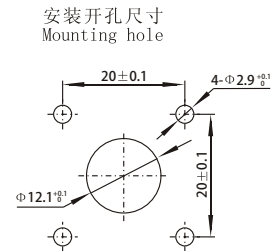
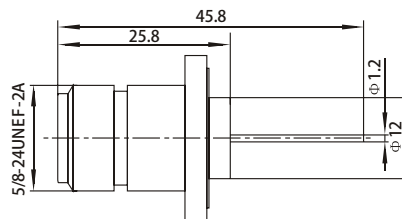
N-50KFD25



N-50KFD26



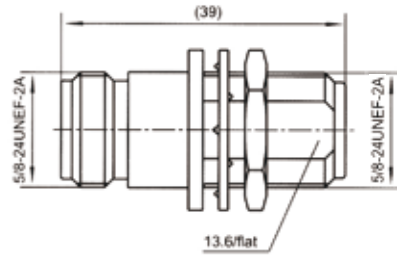
N-50KFD100



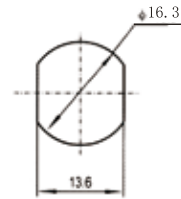
## 系列内转接器



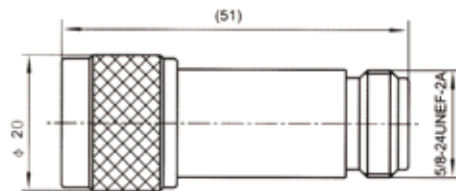
N-50KKY



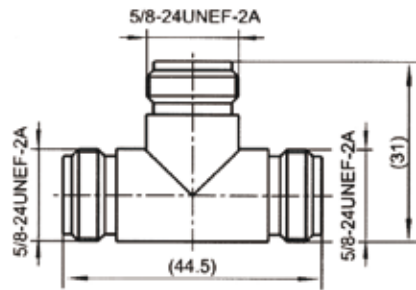
安装开孔尺寸  
Mounting hole



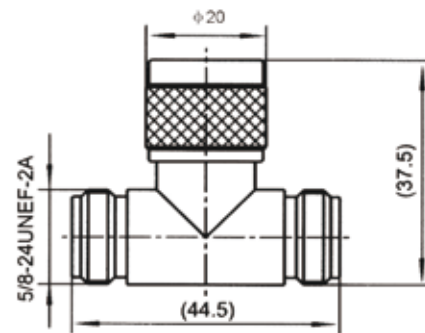
N-50JK



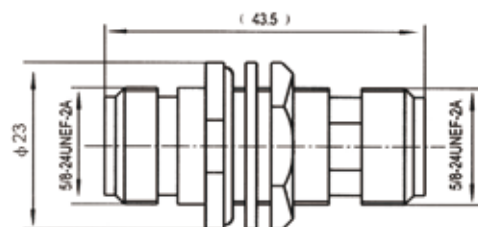
N-50KKK



N-50KJK



NMF-50KKY (气密封)



安装开孔尺寸  
Mounting hole

