

## 概述

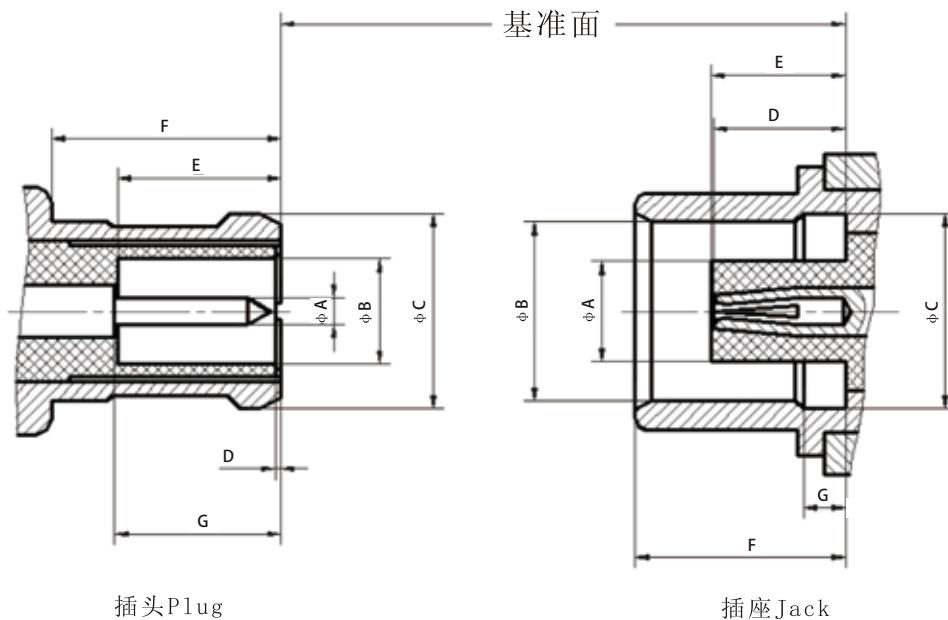
MCX系列射频同轴连接器为推入式连接结构，外形小巧，连接方便快捷。广泛应用于传感系统、定位系统、通信系统等设备中，其特性阻抗为50Ω。

MCX系列射频同轴连接器适用标准为GJB 681A-2002、CECC 22220。

## 主要技术特性

温度范围 Temperature range		-55℃~+155℃	绝缘电阻 Insulation resistance	≥1000MΩ
特性阻抗 Characteristic impedance		50Ω	介质耐压 Dielectric withstanding voltage	750V (rms)
频率范围 Frequency range		0GHz~6GHz	电压驻波比 VSWR	≤1.35
工作电压 Voltage rating		250V (rms)	插入损耗 Insertion loss	0.1dB at 1GHz
接触电阻 Contact resistance	中心导体 Center conductor	≤0.005Ω	寿命 Durability	500 Cycles
	外导体 Outer conductor	≤0.0025Ω		

## 头部配合尺寸 INTERF ACE MA TING DIMENSIONS



# MCX系列射频同轴连接器

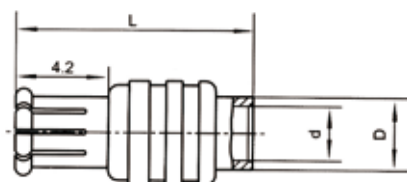


PLUG (mm)			JACK (mm)		
Symbol	MIN	MAX	Symbol	MIN	MAX
A	$\phi 0.48$	$\phi 0.53$	A	$\phi 1.80$	$\phi 1.97$
B	$\phi 2.00$	$\phi 2.07$	B	$\phi 3.43$	$\phi 3.48$
C	$\phi 3.66$	$\phi 3.76$	C	$\phi 3.61$	$\phi 3.75$
D	0.00	0.30	D	2.31	2.79
E	2.81	3.20	E	2.61	2.79
F	4.15	-	F	4.00	4.12
G	2.81	3.20	G	0.75	0.85

## 电缆连接器



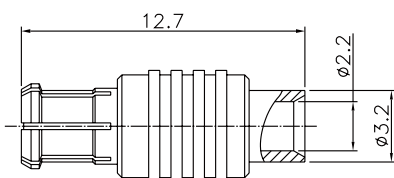
MCX-JB2等



Type	L	D	d	Cable type
MCX-JB2	11.5	$\phi 3.6$	$\phi 2.2$	SFT-50-2-1
MCX-JB3	12	$\phi 4.6$	$\phi 3.7$	SFT-50-3-1



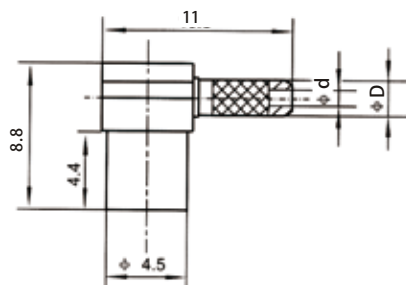
MCX-JB2B



Type	Cable type
MCX-JB2B	RG405/U SM86



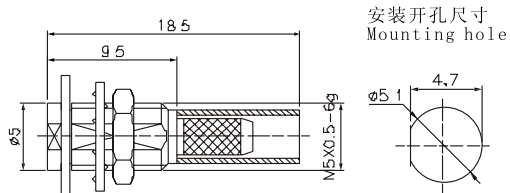
MCX-KW2等



Type	d	D	Cable type
MCX-KW2	$\phi 1$	$\phi 2$	SFF-50-1, SYV-50-1
MCX-KW3A	$\phi 2.3$	$\phi 3.4$	SYV-50-2-2



MCX-KY3A等



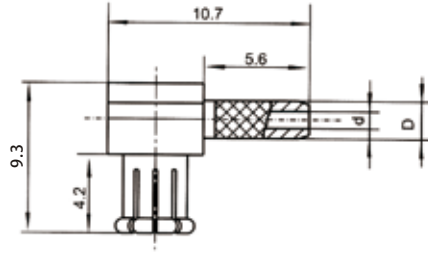
安装开孔尺寸  
Mounting hole

Type	Cable type
MCX-KY3A	SFF-50-1.5-1 RG316/U
MCX-KY2A	SFF-50-1 RG178/U

# MCX系列射频同轴连接器



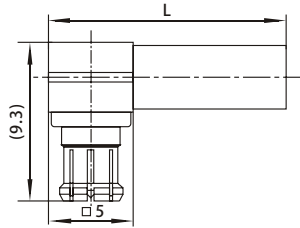
MCX-JW2等



Type	d	D	Cable type
MCX-JW2	φ1.0	φ2	SFF-50-1 SYV-50-1
MCX-JW4	φ2.3	φ3.4	SYV-50-2-2



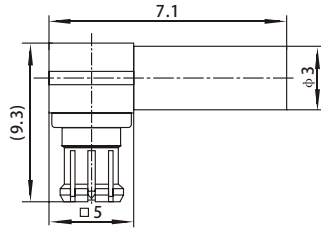
MCX-JW3等



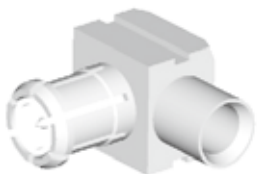
Type	L	Cable type	Not
MCX-JW3	14	SFF-50-1.5-1 SYV-50-2-1	常规
MCX-JW3A	14	SFF-50-1.5-1 SYV-50-2-1	无磁性



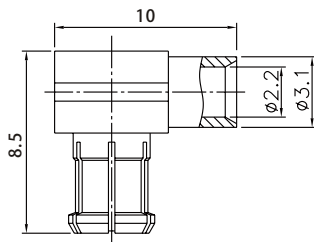
MCX-JWB2B



Type	Cable type
MCX-JWB2B	SFT-50-2-1 SM86



MCX-JWB2G

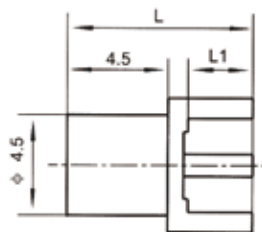


Type	Cable type
MCX-JWB2C	SFT-50-2-1 SM86

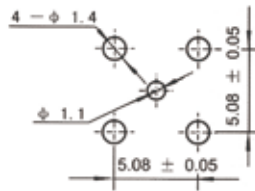
## 印制电路板连接器



MCX-KHD等



安装开孔尺寸  
Mounting hole

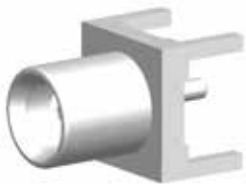
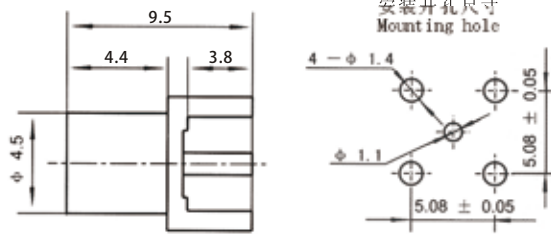


Type	L	L1
MCX-KHD	8.3	2.6
MCX-KHD1	9.3	3.6
MCX-KHD2	7.1	1.4
MCX-KHD3	11.3	3.9
MCX-KHD5	9.5	3.4

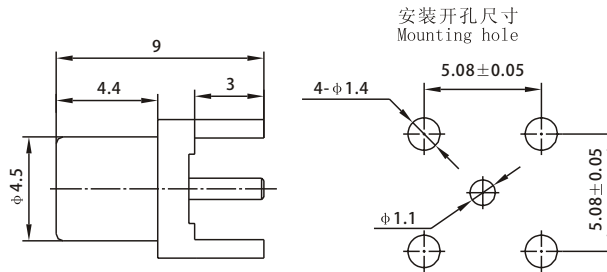
# MCX系列射频同轴连接器



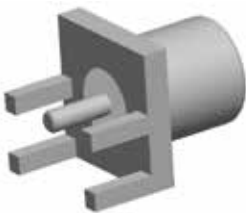
MCX-KHD6



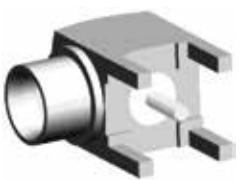
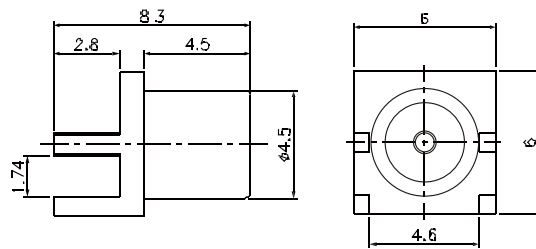
MCX-KHD7等



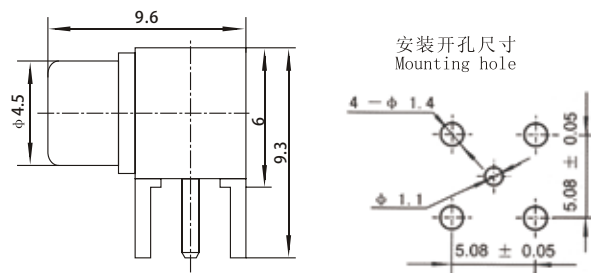
Type	Not
MCX-KHD7	常规
MCX-KHD7A	无磁性



MCX-KHD104

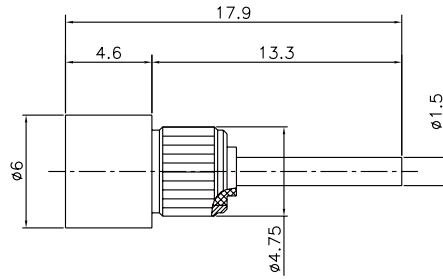


MCX-KWHD

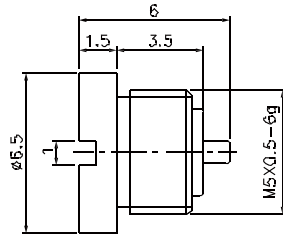




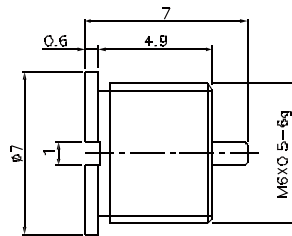
MCX-KRD100



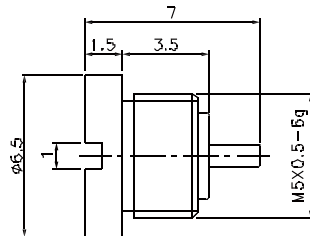
MCX-KY-1



MCX-KY-2



MCX-KY-3



# MCX75系列射频同轴连接器



## 概述

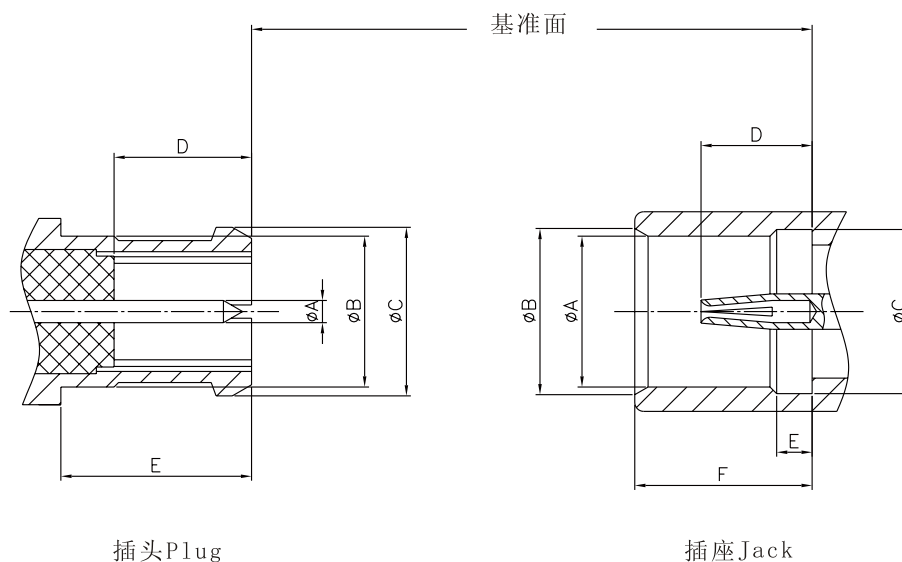
MCX75系列射频同轴连接器为推入锁紧结构，其特性阻抗为75Ω，适用于各种设备高频回路中连接75Ω的射频同轴电缆。

MCX75系列射频同轴连接器适用标准为GJB 681A-2002、CECC 22220。

## 主要技术特性

温度范围 Temperature range		-55℃~+155℃	工作电压 Voltage rating	250V (rms)
特性阻抗 Characteristic impedance		75Ω	绝缘电阻 Insulation resistance	≥1000MΩ
频率范围 Frequency range		0GHz~1.5GHz	介质耐压 Dielectric withstanding voltage	750V (rms)
接触电阻 Contact resistance	中心导体 Center conductor	≤0.005Ω	电压驻波比 VSWR	≤1.35
	外导体 Outer conductor	≤0.0025Ω	寿命 Durability	500 Cycles

## 头部配合尺寸 INTERFACING DIMENSIONS

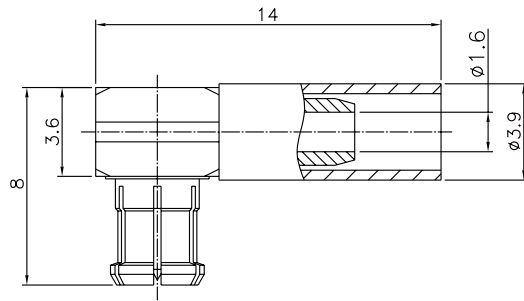


PLUG (mm)			JACK (mm)		
Symbol	MIN	MAX	Symbol	MIN	MAX
A	0.48	0.53	A	3.43	3.48
B	-	3.43	B	3.81	-
C	3.66	3.76	C	3.61	3.75
D	2.79	-	D	2.31	2.79
E	4.15	-	E	0.75	0.85
F	-	-	F	4.00	4.12

## 电缆连接器



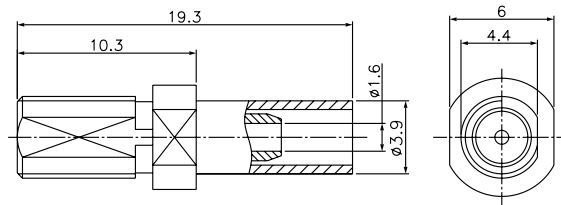
MCX-75JW3B



Type	Cable type
MCX-75JW3B	SFF-50-1.5-1 SYV-50-2-1



MCX-75KY3Y



Type	Cable type
MCX-75KY3Y	SFF-50-1.5-1 SYV-50-2-1

## 印制电路板连接器



MCX-75KWHD

