

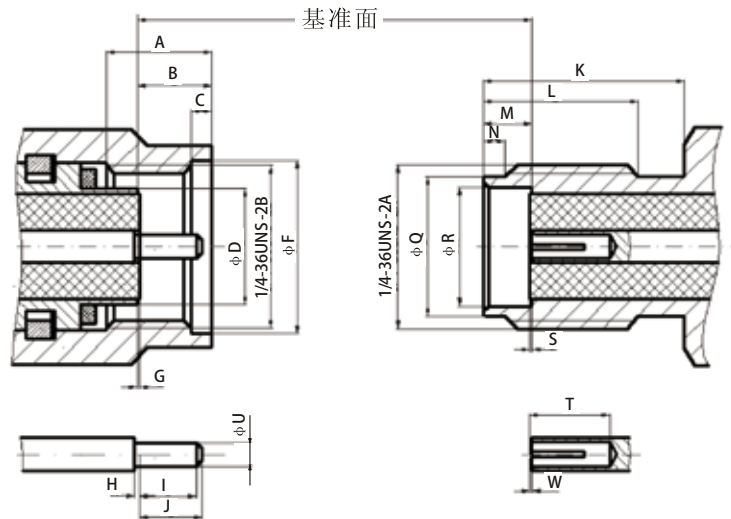
概述

SMA系列射频同轴连接器具有体积小、频带宽、机械电气性能优越、可靠性高等优点。合适的电缆配接，SMA连接器在18GHz内均保持良好的性能。广泛用于微波通讯、航天航海、武器系统、微波测量等领域。产品符合GJB 681A-2002、MIL-C-39012、IEC 60169-15等技术标准。

主要技术特性

温度范围 Temperature range		-55℃~+155℃	绝缘电阻 Insulation resistance		≥5000MΩ
特性阻抗 Characteristic impedance		50Ω	介质耐压 Dielectric withstanding voltage		1000V
频率范围 Frequency range	配软电缆 With flexible cable	0GHz~12.4GHz	接触电阻 Contact resistance	中心导体 Center conductor	≤0.003Ω
	配半刚、半柔性电缆 With semi-rigid/flexible cable	0GHz~18GHz		外导体 Outer conductor	≤0.002Ω
电压驻波比 VSWR	配软电缆 With flexible cable	≤1.15+0.02F	寿命 Durability		500 Cycles
	配半刚、半柔性电缆 With semi-rigid/flexible cable	≤1.10+0.02F			

头部配合尺寸 INTERF ACE MATING DIMENSIONS



Symbol	MIN	MAX	Symbol	MIN	MAX	Symbol	MIN	MAX
A	3.30	-	H	0	0.25	Q	5.28	5.49
B	-	3.43	I	1.27	-	R	4.597	4.670
C	0.38	1.14	J	-	2.54	S	-	0.05
D	-	4.592	K	5.54	-	T	2.92	-
F	6.35	-	L	4.32	-	U	0.90	0.94
G	-	0.05	M	1.88	1.98	W	0	0.76
			N	0.38	1.14			

SMA系列射频同轴连接器



半刚(柔)性电缆连接器

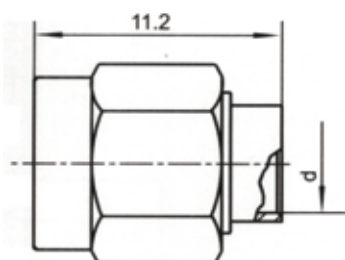
SMA型半刚(柔)性电缆连接器适用于要求低反射、低损耗的射频或微波场合。

SMA型半刚(柔)性电缆连接器常有三种结构:

1. 中心导体焊接式 装配前先把中心导体焊接于电缆内导体。这种结构可靠、耐磨,适用于需频繁插拔场合。
2. 中心导体插入式 中心导体由镀铜热处理制成,电缆内导体可直接插入的开槽孔。
3. 无中心导体式 利用规则形状的电内导体直接作为中心导体。



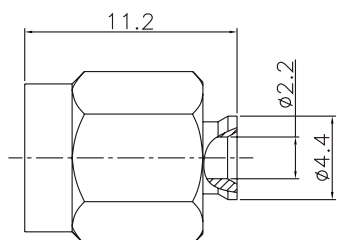
SMA-JB2



Type	d	Cable type	Notes
SMA-JB2	$\phi 2.2$	RG405/U SM86	连接螺母为铜镀金



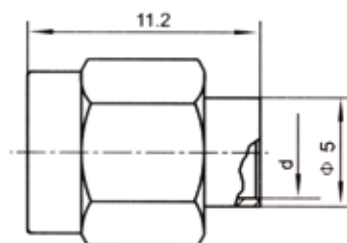
SMA-JB2A



Type	Cable type	Notes
SMA-JB2A	RG405/U SM86	连接螺母为铜镀金



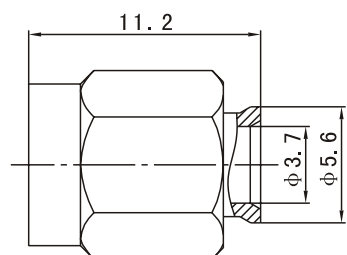
SMA-JB3等



Type	d	Cable type	Notes
SMA-JB3	$\phi 3.7$	SM141	连接螺母为铜镀金
SMA-JB3A	$\phi 3.7$	SM141	连接螺母为不锈钢钝化



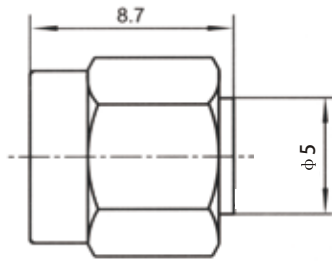
SMA-JB3C等



Type	Cable type	Notes
SMA-JB3C	RG402/U SM141	连接螺母为铜镀金
SMA-JB3D	RG402/U SM141	连接螺母为不锈钢钝化



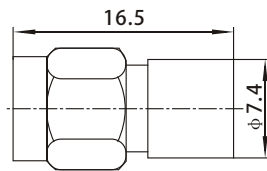
SMA-JB3E



Type	Cable type	Notes
SMA-JB3E	RG402/U SM141 SFT-50-3	无插针 连接螺母 活动可退



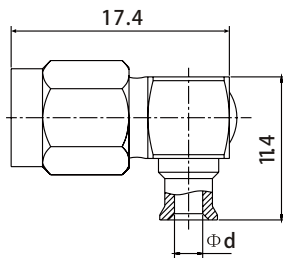
SMA-JB5



Type	Cable type
SMA-JB5	SM250



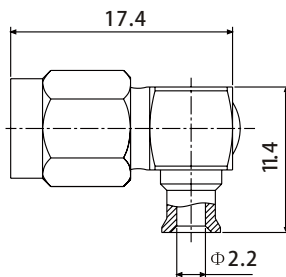
SMA-JWB2等



Type	d	Cable type
SMA-JWB2	φ 2.2	RG405/U SM86
SMA-JWB3	φ 3.7	RG402/U SM141



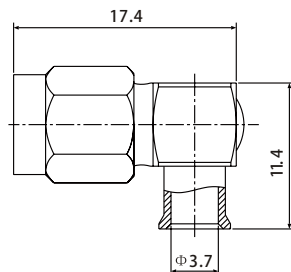
SMA-JWB2A



Type	Cable type	Notes
SMA-JWB2A	RG405/U SM86	连接螺母为镀金



SMA-JWB3A

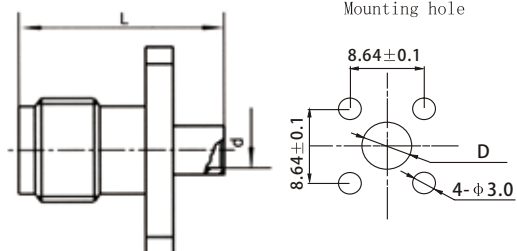


Type	Cable type	Notes
SMA-JWB3A	RG402/U SM141	连接螺母为镀金

SMA系列射频同轴连接器



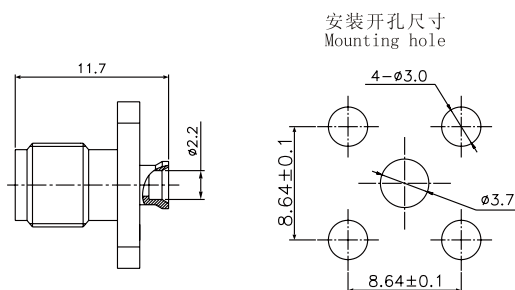
SMA-KFB1等



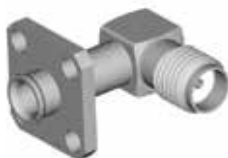
Type	d	L	D	Cable type
SMA-KFB1	φ1.2	12.7	φ3.2	SFT-50-1
SMA-KFB3	φ3.7	12.4	φ5.1	RG402/U SM141



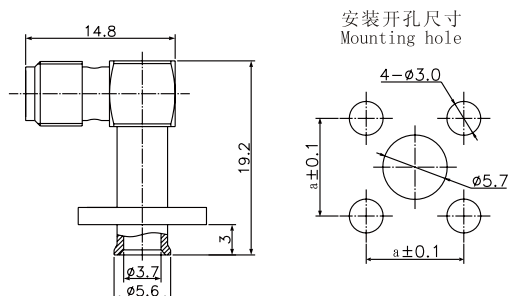
SMA-KFB2



Type	Cable type
SMA-KFB2	RG405/U SM86



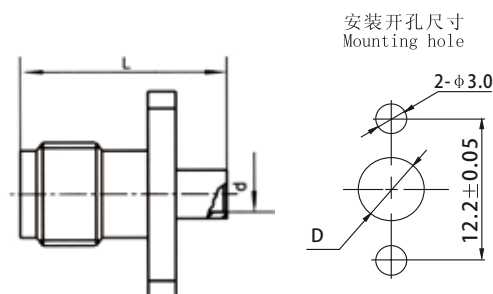
SMA-KWFB3



Type	a
SMA-KWFB3	8.64



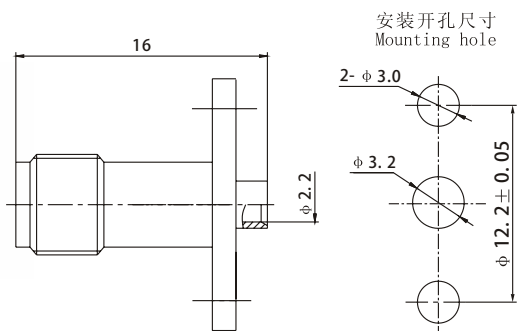
SMA-KFB2A等



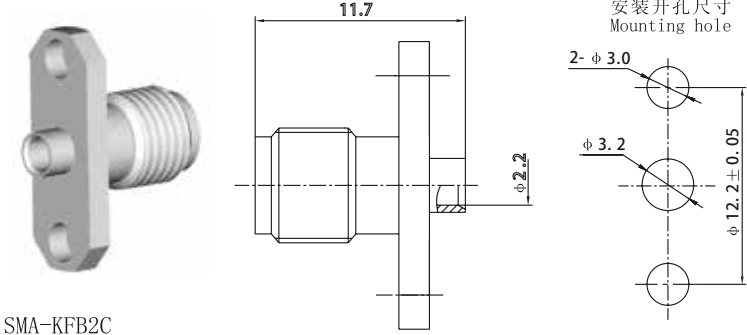
Type	d	L	D	Cable type
SMA-KFB2A	φ2.2	12.7	φ3.5	RG405/U SM86
SMA-KFB3A	φ3.7	14.2	φ5.1	RG402/U SM141



SMA-KFB2B

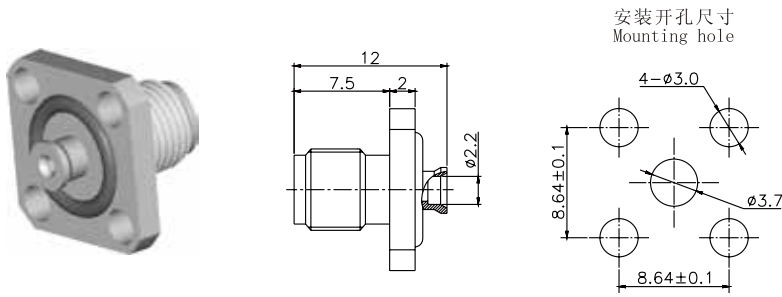


Type	Cable type
SMA-KFB2B	RG405/U SM86



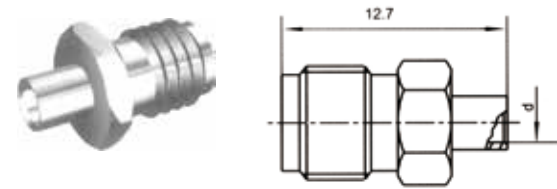
SMA-KFB2C

Type	Cable type
SMA-KFB2C	RG405/U SM86



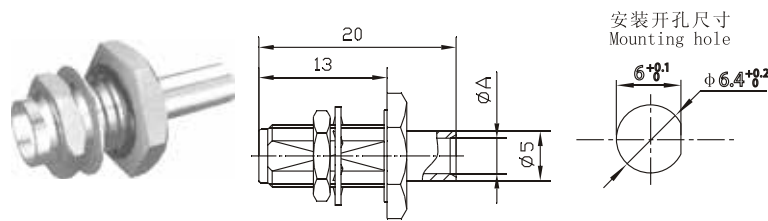
SMA-KFB2G

Type	Cable type
SMA-KFB2D	RG405/U SM86



SMA-KB2等

Type	d	Cable type
SMA-KB2	$\phi 2.2$	RG405/U SM86
SMA-KB3	$\phi 3.7$	RG402/U SM141



SMA-KYB2等

Type	A	Cable type
SMA-KYB2	$\phi 2.2$	RG405/U SM86
SMA-KYB3	$\phi 3.7$	RG402/U SM141

软电缆连接器

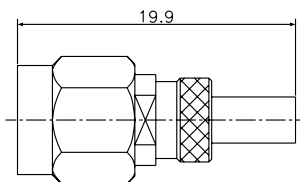
SMA软电缆连接器被设计用于柔软型同轴电缆。该类型连接器能和多种软电缆紧密连接，包括双屏蔽电缆、复合膜屏蔽层电缆等高性能软电缆。

所有的连接器均有焊接式中心导体。电缆屏蔽层连接有压接、装接两种方式。压接式软电缆连接器需特殊压接工具即可实现快速装接，但是拆卸或维修时有一定的困难。

SMA系列射频同轴连接器



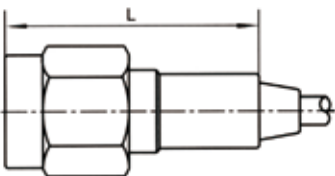
SMA-J2Y



Type	Cable type
SMA-J2Y	SFF-50-1 RG178B/U



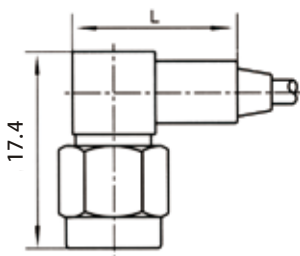
SMA-J3Y等



Type	L	Notes	Cable type
SMA-J3Y	19.9		SFF-50-1.5-1 SYV-50-2-1
SMA-J4Y	19.9		SFF-50-2-2 SYV-50-2-2
SMA-J5Y	20.6		SFF-50-3 SYV-50-3-1
SMA-J4BY	21.7	插针有倒刺	SFF-50-2-2 SYV-50-2-2
SMA-J5BY	23.5	插针有倒刺	SFF-50-3 SYV-50-3-1



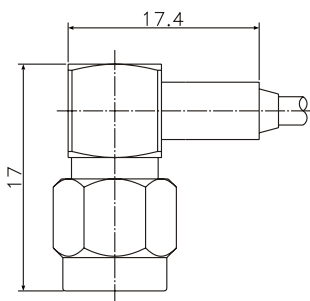
SMA-JW2Y等



Type	L	Cable type
SMA-JW2Y	17	SFF-50-1 SYV-50-1
SMA-JW3Y	17.4	SFF-50-1.5-1 SYV-50-2-1
SMA-JW4Y	17.4	SFF-50-2-2 SYV-50-2-2
SMA-JW5Y	18.1	SFF-50-3-1 SYV-50-3



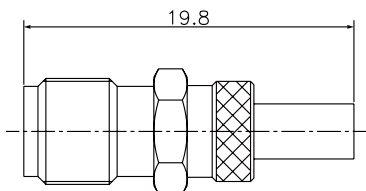
SMA-JW2YA



Type	Cable type	Notes
SMA-JW2YA	SFF-50-1 RG178B/U	连接螺母为铜镀金



SMA-K2Y

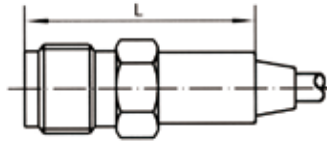


Type	Cable type
SMA-K2Y	SFF-50-1 RG178B/U

SMA系列射频同轴连接器



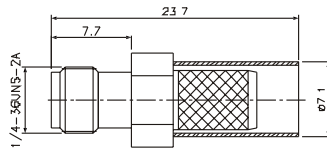
SMA-K3Y等



Type	L	Cable type
SMA-K3Y	20	SFF-50-1.5-1 SYV-50-2-1
SMA-K4Y	20	SFF-50-2-2 SYV-50-2-2
SMA-K5Y	22	SFF-50-3 SYV-50-3-1



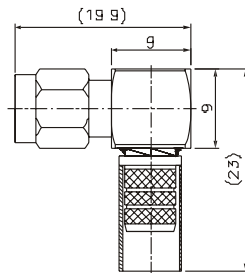
SMA-K240Y



Type	Cable type
SMA-K240Y	LMR-240/UF



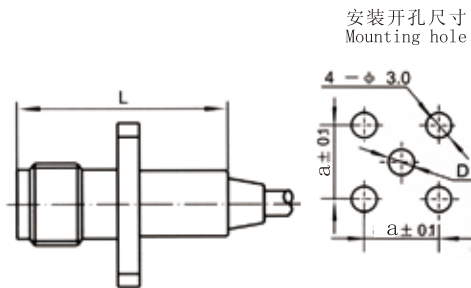
SMA-JW240Y



Type	Cable type
SMA-JW240Y	LMR-240/UF



SMA-KF3Y等

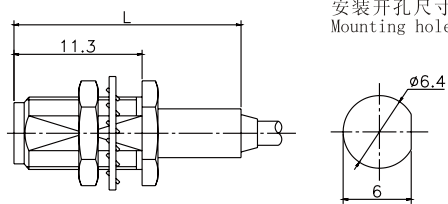


安装开孔尺寸
Mounting hole

Type	L	D	a	Cable type
SMA-KF3Y	20.9	$\phi 5.2$	8.64	SFF-50-1.5-1 SYV-50-2-1
SMA-KF4Y	20	$\phi 6.2$	8.64	SFF-50-2-2 SYV-50-2-2
SMA-KF5Y	22	$\phi 7.2$	8.64	SFF-50-3 SYV-50-3-1



SMA-KY3Y等



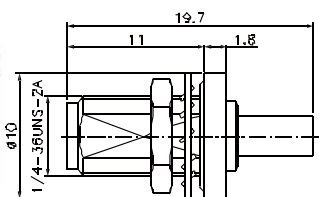
安装开孔尺寸
Mounting hole

Type	L	Cable type
SMA-KY3Y	23.5	SFF-50-1.5-1 SYV-50-2-1
SMA-KY4Y	23.5	SFF-50-2-2 SYV-50-2-2
SMA-KY5Y	23.5	SFF-50-3-1 SYV-50-3

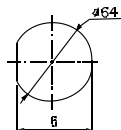
SMA系列射频同轴连接器



SMA (M)-KY2Y-1



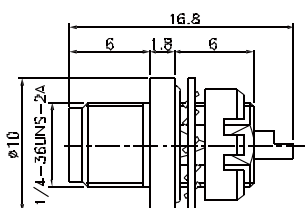
安装开孔尺寸
Mounting hole



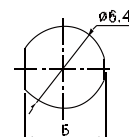
Type	Cable type
SMA (M)-KY2Y-1	SFF-50-1 RG178/U



SMA (M)-KYB1.5



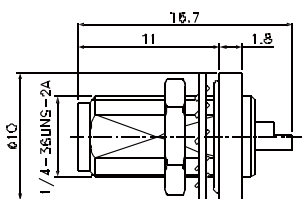
安装开孔尺寸
Mounting hole



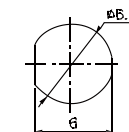
Type	Cable type
SMA (M)-KYB1.5	IPEX-1.37 IPEX-1.13



SMA (M)-KYB1.5A



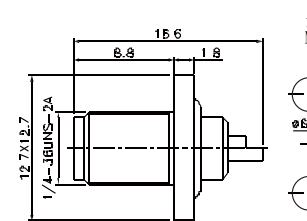
安装开孔尺寸
Mounting hole



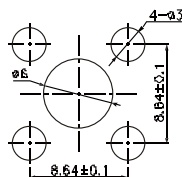
Type	Cable type
SMA (M)-KYB1.5A	IPEX-1.37 IPEX-1.13



SMA (M)-KFB1.5



安装开孔尺寸
Mounting hole



Type	Cable type
SMA (M)-KFB1.5	IPEX-1.37 IPEX-1.13

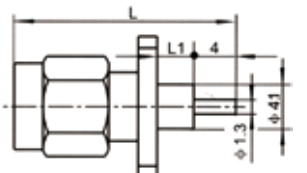
SMA面板连接器

适用于系统机箱面板接口的一种连接器，通过该接口能连接各分系统的射频回路。

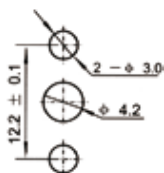
SMA面板连接器有法兰型、穿越安装型的直、弯式结构可满足空腔、微带传输线路等的同轴转换及面板安装。弯式面板连接器采用银焊工艺，坚固可靠，抗扭矩能力强。



SMA-JFD等



安装开孔尺寸
Mounting hole

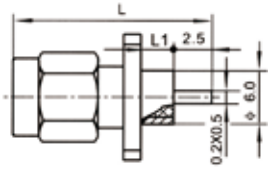


Type	L	L1
SMA-JFD	25.4	8.6
SMA-JFD23	18.7	2.0

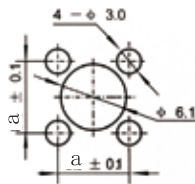
SMA系列射频同轴连接器



SMA-JFD1等



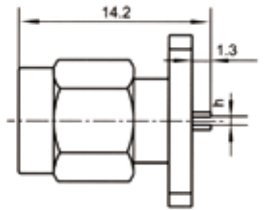
安装开孔尺寸
Mounting hole



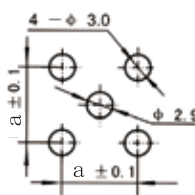
Type	L	L1	a
SMA-JFD1	17.8	2.4	8.64
SMA-JFD2	18.6	3.2	8.64
SMA-JFD3	20.2	4.8	8.64
SMA-JFD4	19.4	4.0	8.64



SMA-JFD5等



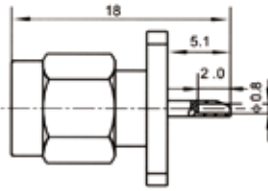
安装开孔尺寸
Mounting hole



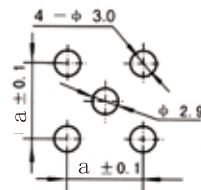
Type	h	a
SMA-JFD5	0.5	8.64
SMA-JFD9	0.2	8.64



SMA-JFD6



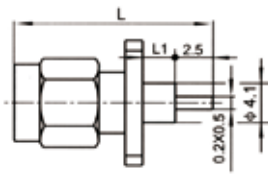
安装开孔尺寸
Mounting hole



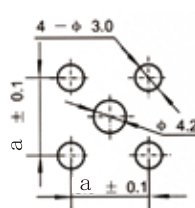
Type	a
SMA-JFD6	8.64



SMA-JFD7等



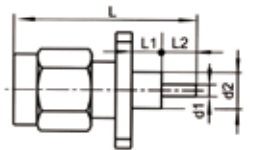
安装开孔尺寸
Mounting hole



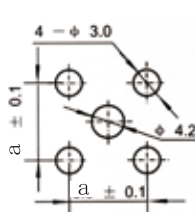
Type	L	L1	a
SMA-JFD7	18.6	3.2	8.64
SMA-JFD-7-4	19.9	4	8.64
SMA-JFD8	19.4	4.0	8.64
SMA-JFD21	17.9	2.4	8.64



SMA-JFD11等

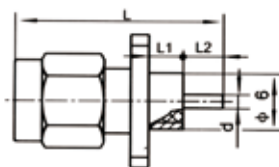


安装开孔尺寸
Mounting hole

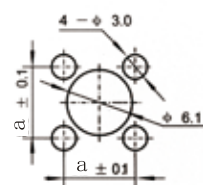


Type	L	L1	L2	d1	d2	a
SMA-JFD11	18.9	2.4	4.0	φ 1.3	φ 4.1	8.64
SMA-JFD12	23.3	8.4	2.0	φ 1.3	φ 4.1	8.64
SMA-JFD13	25.3	8.4	4.0	φ 1.3	φ 4.1	8.64

SMA系列射频同轴连接器

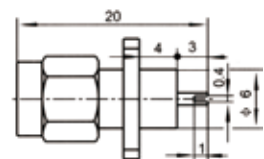


安装开孔尺寸
Mounting hole

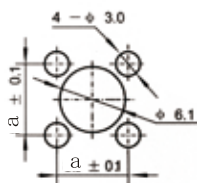


Type	L	L1	L2	d	a
SMA-JFD18	19.1	3.2	3.0	φ 1.3	8.64
SMA-JFD19	19.4	4.0	2.5	φ 1.3	8.64

SMA-JFD18等

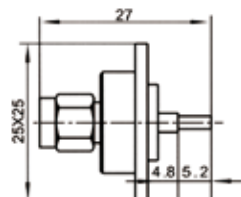


安装开孔尺寸
Mounting hole

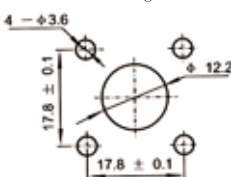


Type	a
SMA-JF020	8.64

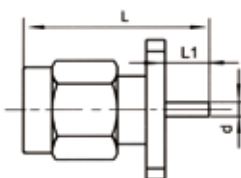
SMA-JFD20



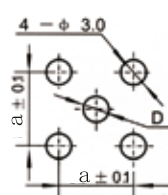
安装开孔尺寸
Mounting hole



SMA-JFD22

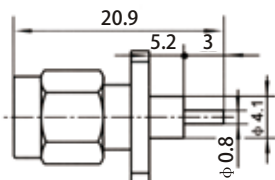


安装开孔尺寸
Mounting hole

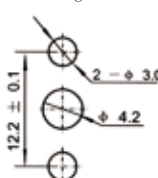


Type	L	L1	d	D	a
SMA-JFD10	16.9	4.0	φ 1.3	φ 2.9	8.64
SMA-JFD24	14.5	1.6	φ 0.9	φ 2.1	8.64
SMA-JFD25	14.1	1.2	φ 0.8	φ 1.8	8.64
SMA-JFD25A	13.8	0.9	φ 0.5	φ 1.2	8.64

SMA-JFD10等



安装开孔尺寸
Mounting hole

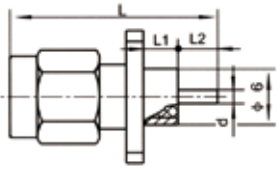


SMA-JFD28

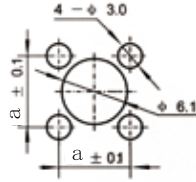
SMA系列射频同轴连接器



SMA-JFD27等



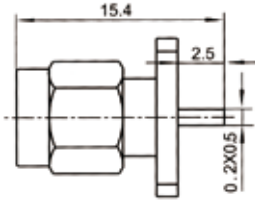
安装开孔尺寸
Mounting hole



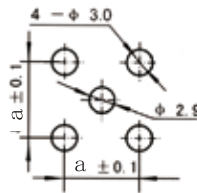
Type	L	L1	L2	d	a
SMA-JFD27	18.0	2.4	2.5	φ1.0	8.64
SMA-JFD30	17.4	3.0	1.5	φ0.7	8.64



SMA-JFD33



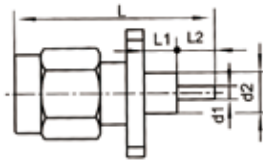
安装开孔尺寸
Mounting hole



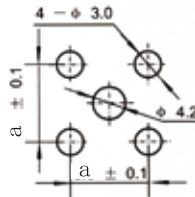
Type	a
SMA-JFD33	8.64



SMA-JFD34等



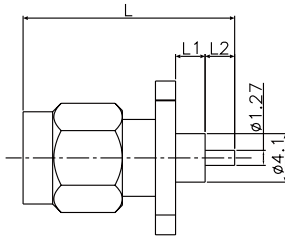
安装开孔尺寸
Mounting hole



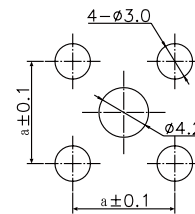
Type	L	L1	L2	d1	d2	a
SMA-JFD34	25.0	8.4	4.0	φ1.3	φ4.1	8.64
SMA-JFD35	25.0	5.0	4.5	φ1.3	φ4.1	8.64
SMA-JFD37	22.4	7.5	2.0	φ1.3	φ4.1	8.64



SMA-JFD300等



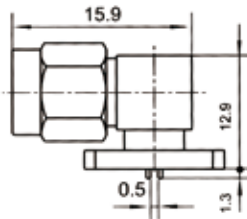
安装开孔尺寸
Mounting hole



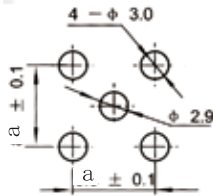
Type	L	L1	L2	a
SMA-JFD300	19.9	4	3	8.64
SMA-JFD301	18.9	4	2	8.64



SMA-JWFD



安装开孔尺寸
Mounting hole

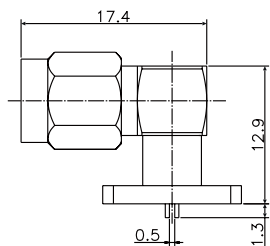


Type	a
SMA-JWFD	8.64

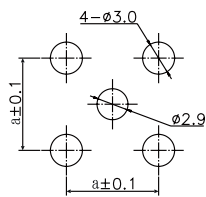
SMA系列射频同轴连接器



SMA-JWFD1



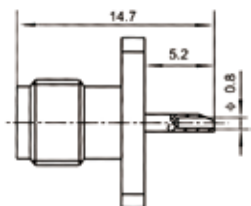
安装开孔尺寸
Mounting hole



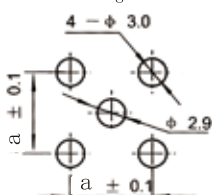
Type	a
SMA-JWFD1	8.64



SMA-KFD



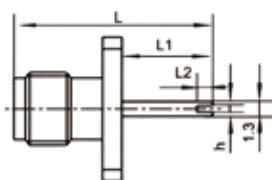
安装开孔尺寸
Mounting hole



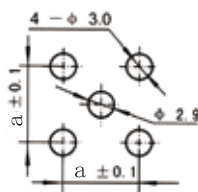
Type	a
SMA-KFD	8.64



SMA-KFD1等



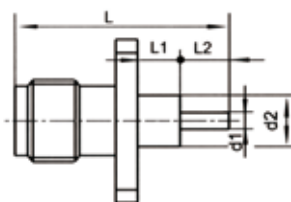
安装开孔尺寸
Mounting hole



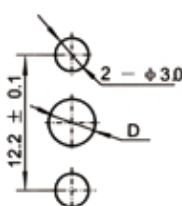
Type	L	L1	L2	h	a
SMA-KFD1	17.5	8.0	1.4	0.6	8.64
SMA-KFD2	12.0	2.5	1.6	0.6	8.64
SMA-KFD18	12.0	2.5	1.6	0.2	8.64



SMA-KFD3等



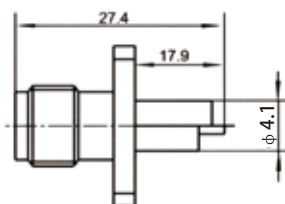
安装开孔尺寸
Mounting hole



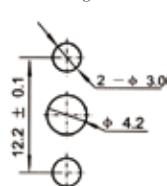
Type	L	L1	L2	d1	d2	D
SMA-KFD3	27.5	15	3	φ1.3	φ4.1	φ4.2
SMA-KFD5B	14.5	3.2	2	φ1.3	φ4.1	φ4.2

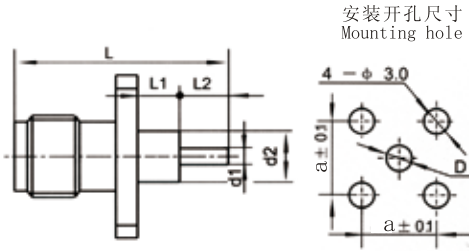


SMA-KFD4



安装开孔尺寸
Mounting hole

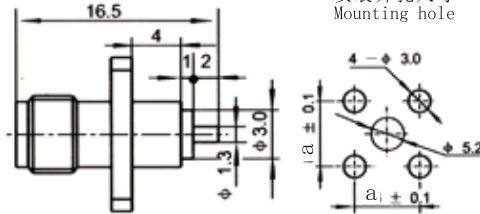




安装开孔尺寸
Mounting hole

Type	L	L1	L2	d1	d2	D	a
SMA-KFD5	15.5	4.0	2.0	φ 1.3	φ 4.1	φ 4.2	8.64
SMA-KFD6	20.5	9.0	2.0	φ 1.3	φ 4.1	φ 4.2	8.64

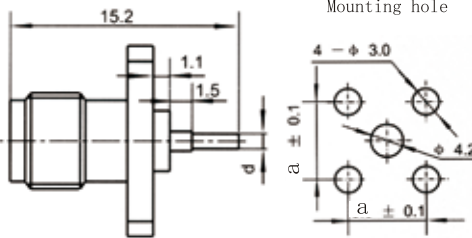
SMA-KFD5等



安装开孔尺寸
Mounting hole

Type	a
SMA-KFD7	8.64

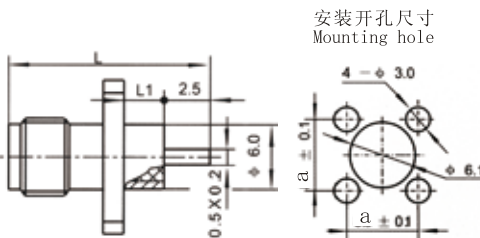
SMA-KFD7



安装开孔尺寸
Mounting hole

Type	d	a
SMA-KFD8	φ 1.0	8.64

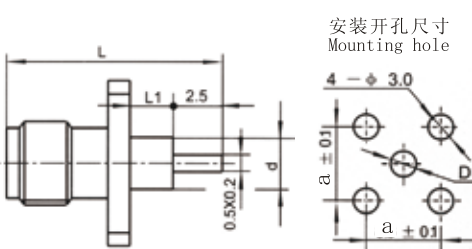
SMA-KFD8



安装开孔尺寸
Mounting hole

Type	L	L1	a
SMA-KFD9	14.5	2.4	8.64
SMA-KFD10	15.3	3.2	8.64
SMA-KFD11	16.9	4.8	8.64
SMA-KFD12	16.1	4.0	8.64

SMA-KFD9等

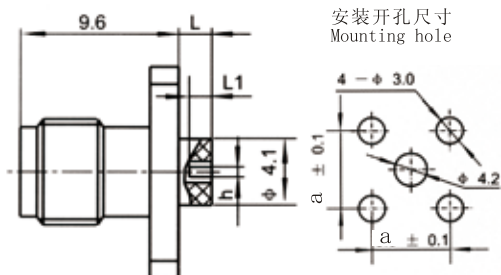


安装开孔尺寸
Mounting hole

Type	L	L1	d	D	a
SMA-KFD13	16.0	4.0	φ 4.1	φ 4.2	8.64
SMA-KFD14	15.3	3.2	φ 4.1	φ 4.2	8.64

SMA-KFD13等

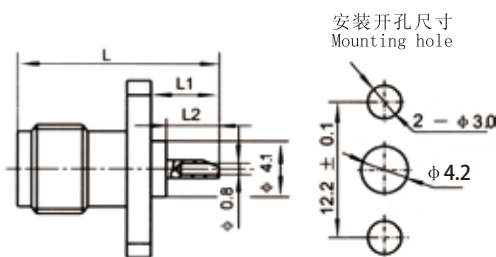
SMA系列射频同轴连接器



安装开孔尺寸
Mounting hole

Type	h	L	L1	a
SMA-KFD15	0.4	2.0	2.0	8.64
SMA-KFD28	0.2	3.0	2.5	8.64

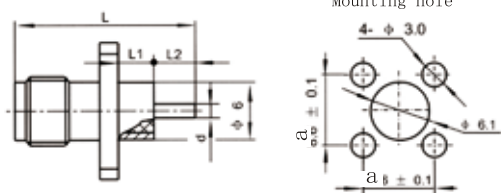
SMA-KFD15等



安装开孔尺寸
Mounting hole

Type	L	L1	L2
SMA-KFD17	14.7	5.1	4.0

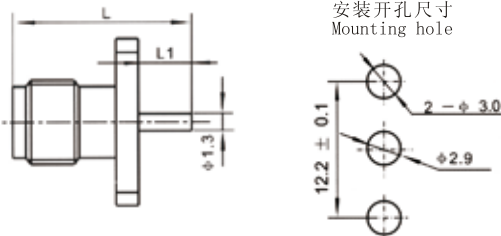
SMA-KFD17



安装开孔尺寸
Mounting hole

Type	L	L1	L2	d	a
SMA-KFD19	15.5	4.0	2.0	φ1.3	8.64
SMA-KFD29	15.7	3.2	3.0	φ1.3	8.64

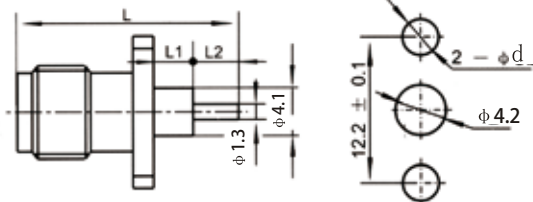
SMA-KFD19等



安装开孔尺寸
Mounting hole

Type	L	L1
SMA-KFD20	13.5	4.0
SMA-KFD51	12.0	2.5

SMA-KFD20等



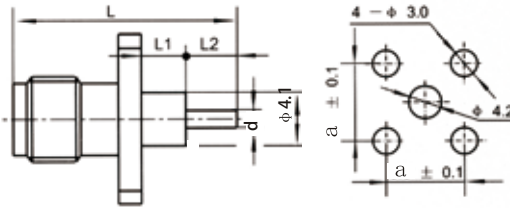
安装开孔尺寸
Mounting hole

Type	L	L1	L2	d
SMA-KFD21	15.5	2.0	4.0	3.3
SMA-KFD21B	15.5	2.0	4.0	2.7
SMA-KFD46	16.5	4.0	3.0	3.1

SMA-KFD21等

SMA系列射频同轴连接器

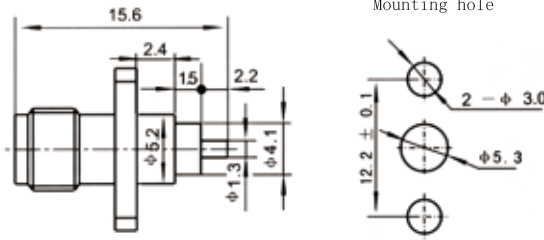
安装开孔尺寸
Mounting hole



Type	L	L1	L2	d	a
SMA-KFD22	27.4	15	3.0	φ1.3	8.64
SMA-KFD23	14.1	4.0	0.6	φ0.4	8.64
SMA-KFD43	21.5	4.0	8.0	φ1.3	8.64

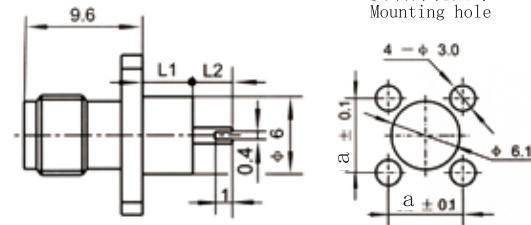
SMA-KFD22等

安装开孔尺寸
Mounting hole



SMA-KFD24

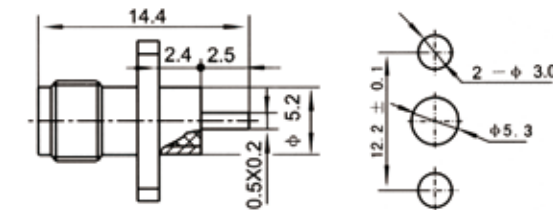
安装开孔尺寸
Mounting hole



Type	L1	L2	a
SMA-KFD30	4.0	3.0	8.64
SMA-KFD34	1.0	1.0	8.64

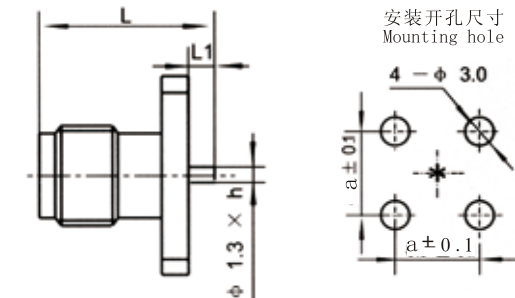
SMA-KFD30等

安装开孔尺寸
Mounting hole



SMA-KFD31

安装开孔尺寸
Mounting hole



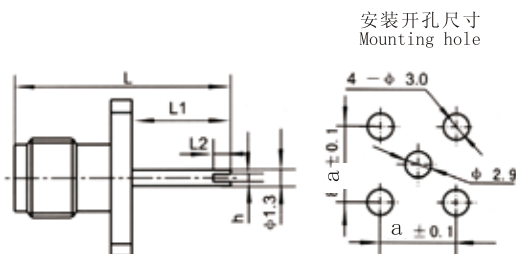
Type	L	L1	h	a
SMA-KFD32	16.1	2.5	0.2	8.64
SMA-KFD33	10.9	1.4	0.2	8.64

SMA-KFD32等

SMA系列射频同轴连接器



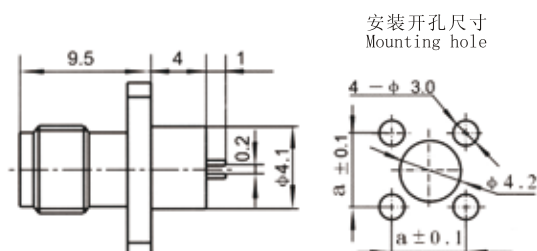
SMA-KFD35等



Type	L	L1	L2	h	a
SMA-KFD35	10.6	1.0	1.0	0.4	8.64
SMA-KFD36	10.6	1.0	1.0	0.2	8.64



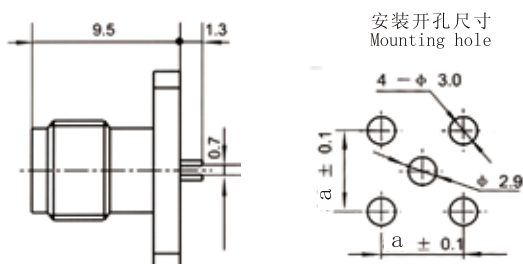
SMA-KFD37



Type	a
SMA-KFD37	8.64



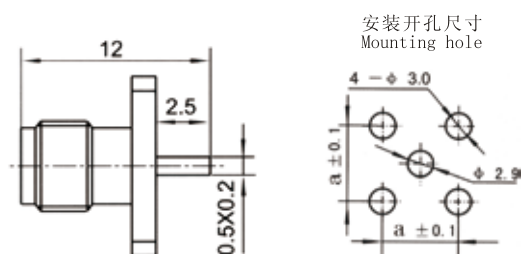
SMA-KFD38



Type	a
SMA-KFD38	8.64



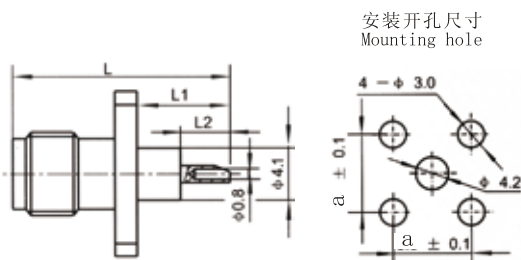
SMA-KFD39



Type	a
SMA-KFD39	8.64



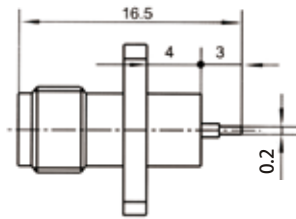
SMA-KFD40



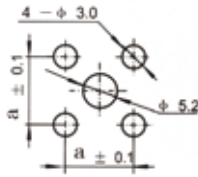
Type	L	L1	L2	a
SMA-KFD40	16.5	7.0	3.0	8.64



SMA-KFD42



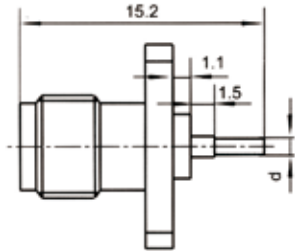
安装开孔尺寸
Mounting hole



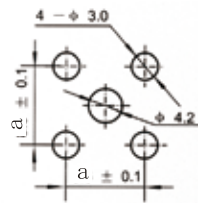
Type	a
SMA-KFD42	8.64



SMA-KFD44



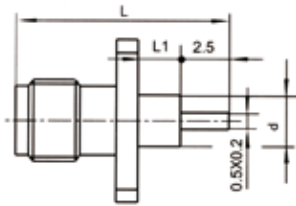
安装开孔尺寸
Mounting hole



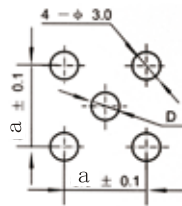
Type	d	a
SMA-KFD44	φ0.6	8.64



SMA-KFD45等



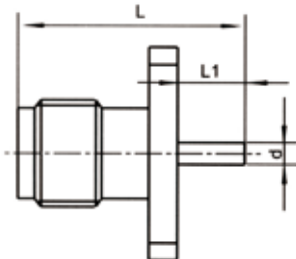
安装开孔尺寸
Mounting hole



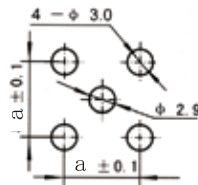
Type	L	L1	d	D	a
SMA-KFD45	14.4	2.4	φ4.1	φ4.2	8.64
SMA-KFD68	15.2	3.2	φ2.1	φ2.2	8.64



SMA-KFD47等



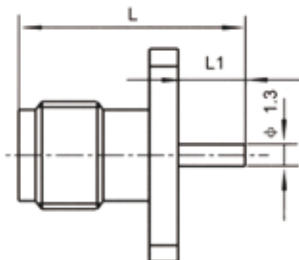
安装开孔尺寸
Mounting hole



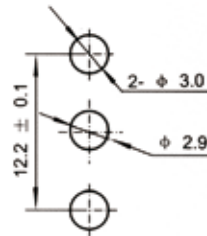
Type	L	L1	d	a
SMA-KFD47	11.1	1.6	φ0.9	8.64
SMA-KFD48	10.7	1.2	φ0.8	8.64
SMA-KFD48A	10.4	0.9	φ0.6	8.64



SMA-KFD51



安装开孔尺寸
Mounting hole

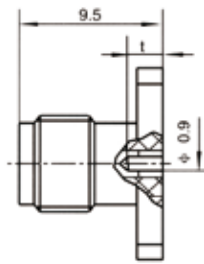


Type	L	L1
SMA-KFD51	12.0	2.5

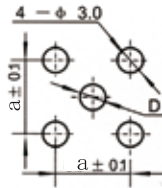
SMA系列射频同轴连接器



SMA-KFD53



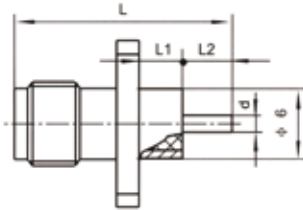
安装开孔尺寸
Mounting hole



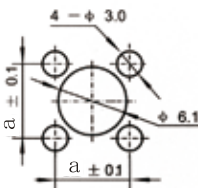
Type	t	D	a
SMA-KFD53	2.6	φ 2.9	8.64



SMA-KFD54



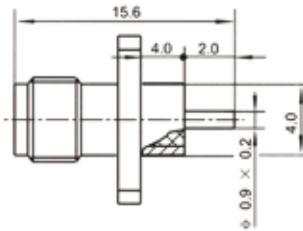
安装开孔尺寸
Mounting hole



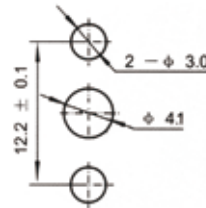
Type	L	L1	L2	d	a
SMA-KFD54	14.5	2.4	2.5	φ 1.0	8.64



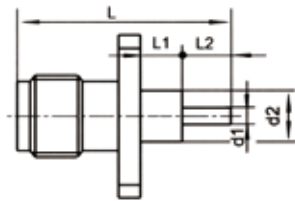
SMA-KFD55



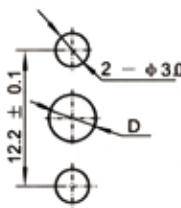
安装开孔尺寸
Mounting hole



SMA-KFD57等



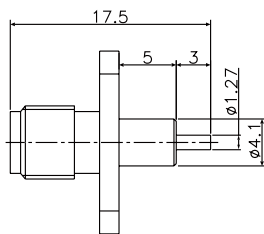
安装开孔尺寸
Mounting hole



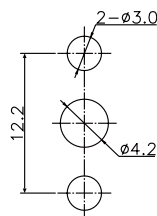
Type	L	L1	L2	d1	d2	D
SMA-KFD57	17.4	5.0	3.0	φ 0.8	φ 4.1	φ 4.2
SMA-KFD77	15.6	2.0	4.0	φ 1.3	φ 4.1	φ 4.2



SMA-KFD58

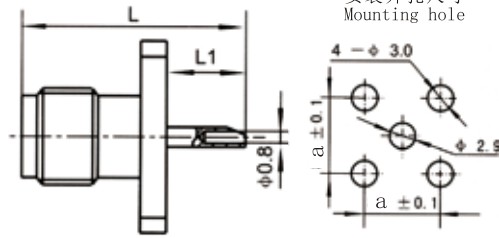


安装开孔尺寸
Mounting hole





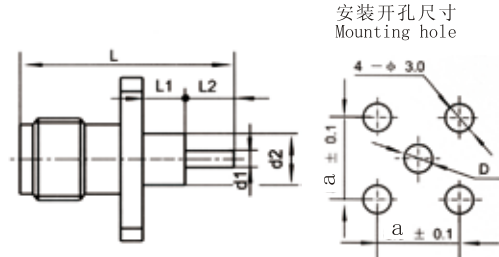
SMA-KFD65



Type	L	L1	a
SMA-KFD65	12.5	3.0	8.64



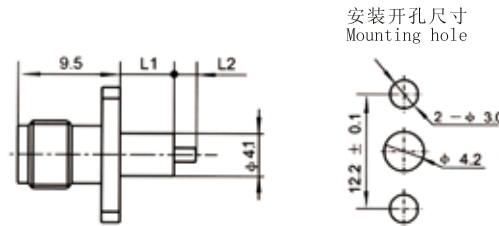
SMA-KFD68B等



Type	L	L1	L2	d1	d2	D	a
SMA-KFD68B	15.2	3.2	2.5	φ0.7	φ2.1	φ2.2	8.64
SMA-KFD83	14.5	2.4	2.5	φ1.3	φ4.1	φ4.2	8.64
SMA-KFD85	27.4	13	5.0	φ1.3	φ4.1	φ4.2	8.64



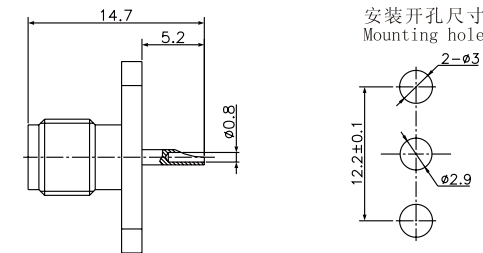
SMA-KFD69等



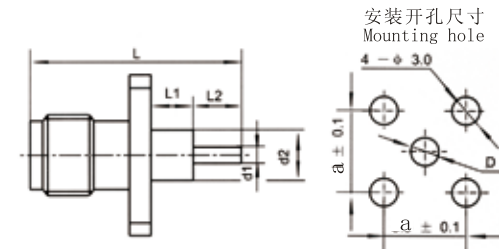
Type	L1	L2
SMA-KFD69	2.5	5.5
SMA-KFD73	4.0	5.6



SMA-KFD86



SMA-KFD91等

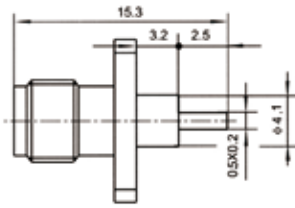


Type	L	L1	L2	d1	d2	D	a
SMA-KFD91	24.2	1.6	13.1	φ1.3	φ4.1	φ4.2	8.64
SMA-KFD101	27.5	15	3.0	φ1.3	φ4.1	φ4.2	8.64
SMA-KFD103	19	7.5	2.0	φ1.3	φ4.1	φ4.2	8.64

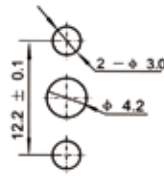
SMA系列射频同轴连接器



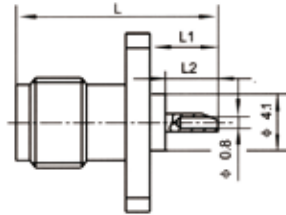
SMA-KFD98



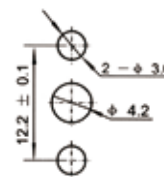
安装开孔尺寸
Mounting hole



SMA-KFD100



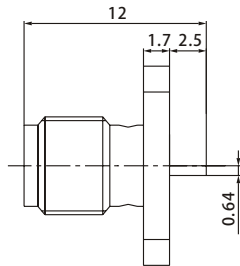
安装开孔尺寸
Mounting hole



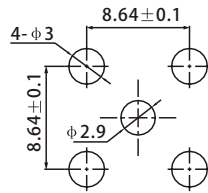
Type	L	L1	L2
SMA-KFD100	16.5	7.0	3.0



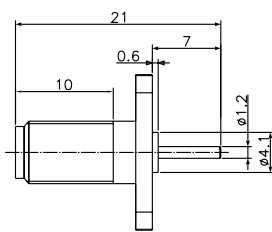
SMA-KFD335



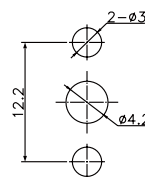
安装开孔尺寸
Mounting hole



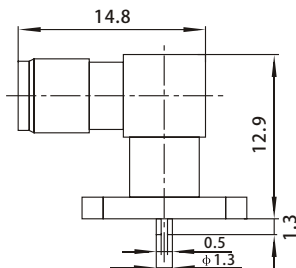
SMA-KFD337



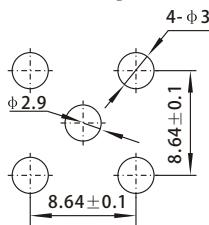
安装开孔尺寸
Mounting hole



SMA-KWFD



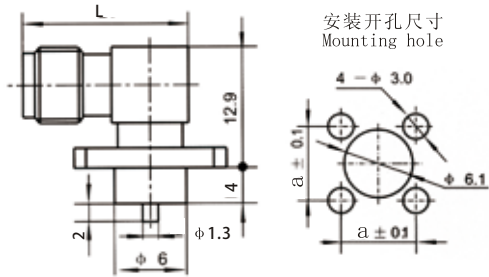
安装开孔尺寸
Mounting hole



SMA系列射频同轴连接器



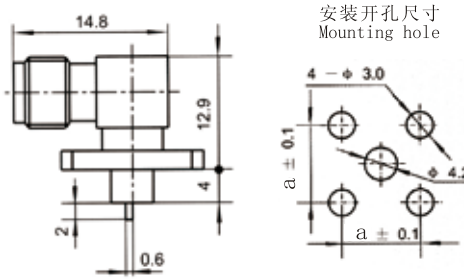
SMA-KWFD2等



Type	L	a
SMA-KWFD2	14.8	8.64
SMA-KWFD21	23.3	8.64



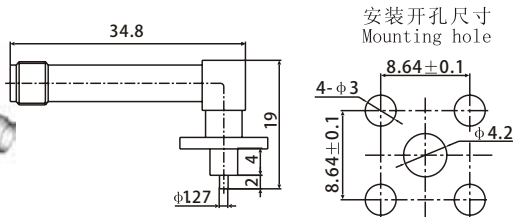
SMA-KWFD3



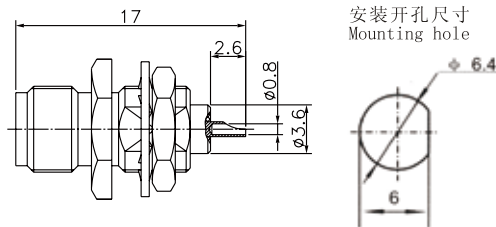
Type	a
SMA-KWFD3	8.64



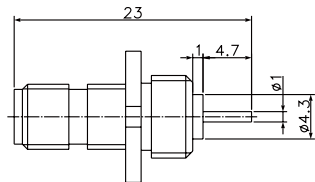
SMA-KWFD4



SMA-KYD



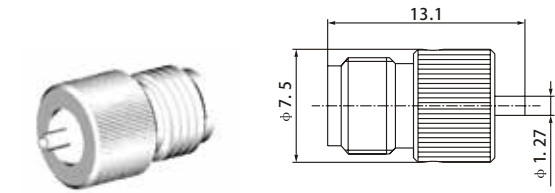
SMA-KYD5



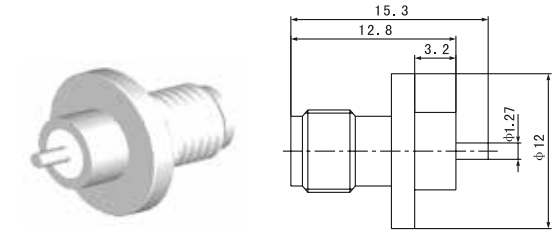
SMA系列射频同轴连接器



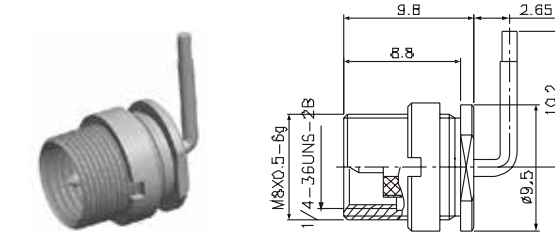
射
频
同
轴
连
接
器



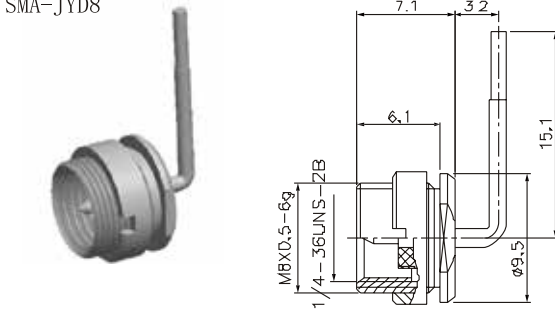
SMA-KRD



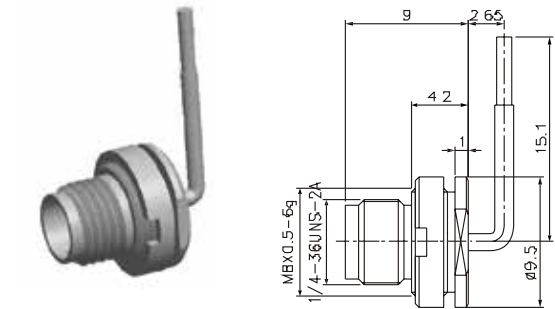
SMA-KFD10r



SMA-JYD8



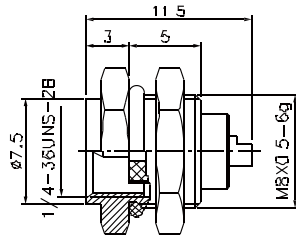
SMA-JYD9



SMA-KYD102



SMA (M)-JYB1.1



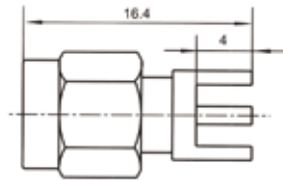
Type	Cable type
SMA (M)-JYB1.1	IPEX-1.37 IPEX-1.13

印制电路板连接器

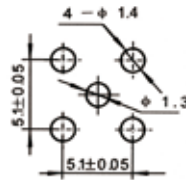
印制线路板用连接器可直接焊于线路板为内部电路进行转换。这里列出了几种最常用的型号。



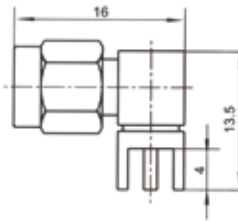
SMA-JHD



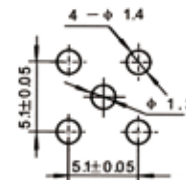
安装开孔尺寸
Mounting hole



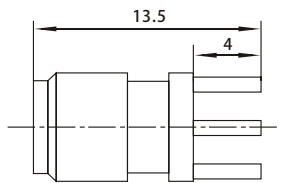
SMA-JWHD



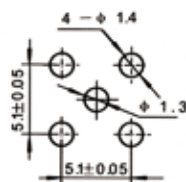
安装开孔尺寸
Mounting hole



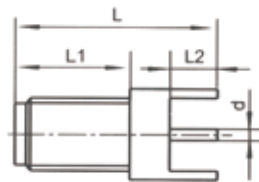
SMA-KHD



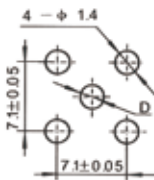
安装开孔尺寸
Mounting hole



SMA-KHD1等



安装开孔尺寸
Mounting hole

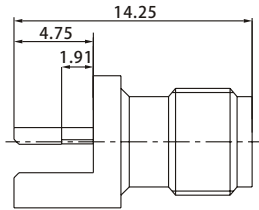


Type	L	L1	L2	d	D
SMA-KHD1	17.7	10.0	4.2	φ1.0	φ1.1
SMA-KHD2	34.0	11.0	3.0	φ0.8	φ0.9
SMA-KHD3	29.0	11.0	3.0	φ0.8	φ0.9

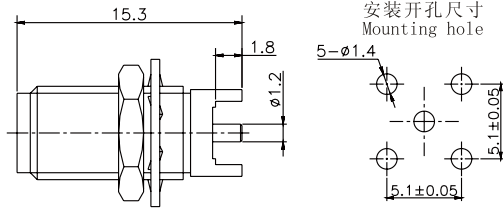
SMA系列射频同轴连接器



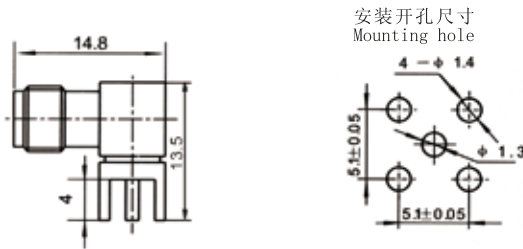
SMA-KHD4



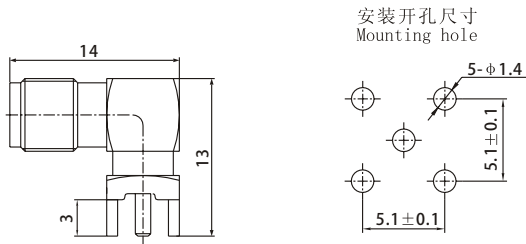
SMA-KHD5



SMA-KWHD



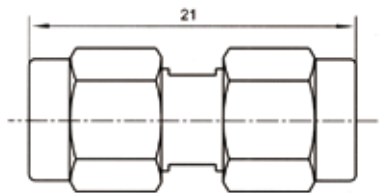
SMA-KWHD1



系列内转接器

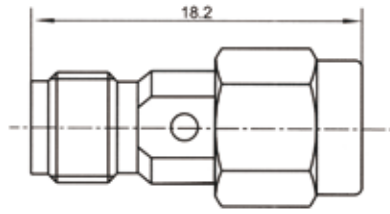


SMA-JJ

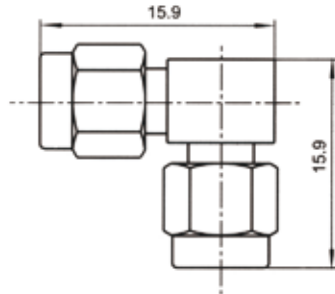




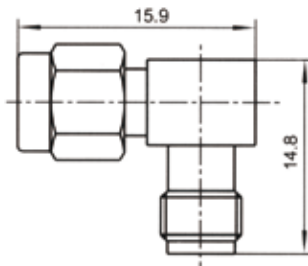
SMA-JK



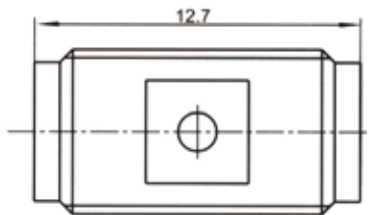
SMA-JWJ



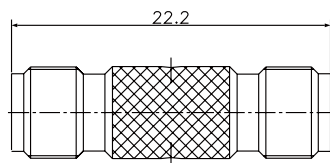
SMA-JWK



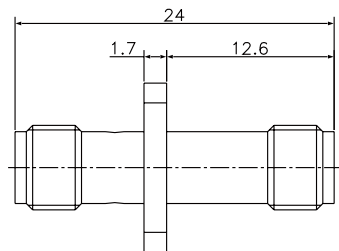
SMA-KK



SMA-KK1



SMA-KKF



安装开孔尺寸
Mounting hole

