

SMB系列射频同轴连接器



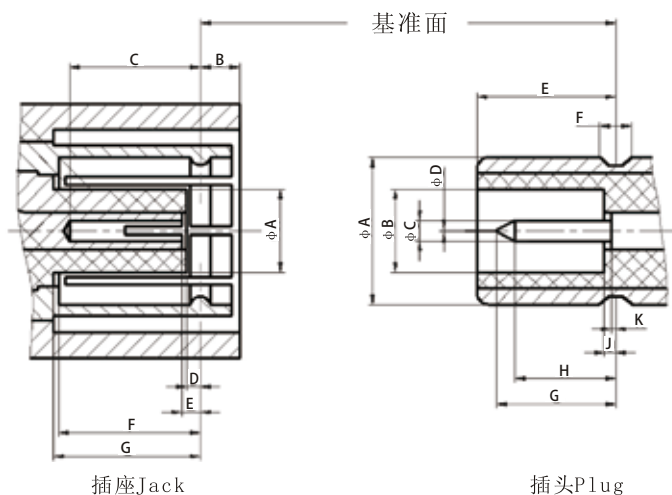
概述

SMB射频同轴连接器独具有推入式连接结构，接插及分离快速可靠，高频应用可达3GHz，具有体积小、重量轻、使用方便等优点。产品符合GJB 681A-2002、MIL-C-39012、IEC 60169-10等技术标准。

主要技术特性

温度范围 Temperature range		-55℃~+155℃	绝缘电阻 Insulation resistance	≥1000MΩ
特性阻抗 Characteristic impedance		50 Ω	介质耐压 Dielectric withstanding voltage	750V (rms)
频率范围 Frequency range		0GHz~3GHz	工作电压 Voltage rating	500V (rms)
接触电阻 Contact resistance	中心导体 Center conductor	≤0.005 Ω	寿命 Durability	500 Cycles
	外导体 Outer conductor	≤0.0025 Ω	电压驻波比 VSWR	≤1.34

头部配合尺寸 INTERF ACE MA TING DIMENSIONS

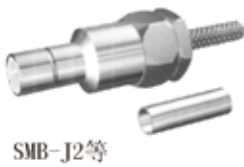


插座Jack

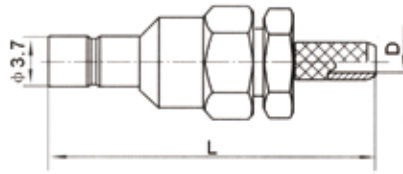
插头Plug

JACK (mm)			PLUG (mm)		
Symbol	MIN	MAX	Symbol	MIN	MAX
A	2.00	2.06	A	3.66	3.71
B	-	1.63	B	2.08	-
C	2.97	-	C	0.48	0.53
D	0.18	-	D	-	0.25
E	0.18	0.94	E	3.33	3.58
F	3.58	-	F	0.69	0.94
G	3.58	-	G	-	2.97
			H	1.32	-
			J	-	0.18
			K	-	0.18

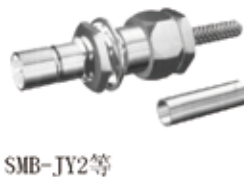
SMB系列射频同轴连接器



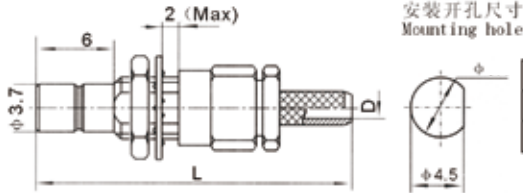
SMB-J2等



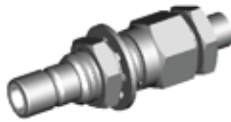
Type	L	D	Cable type
SMB-J2	21.6	φ1	SFF-50-1 SYV-50-1
SMB-J3	22.6	φ1.6	SFF-50-1.5-1 SYV-50-2-1



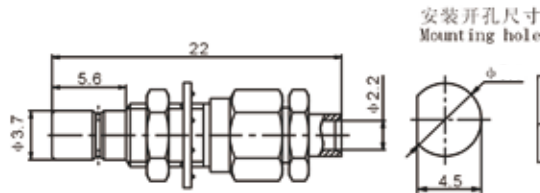
SMB-JY2等



Type	D	L	Cable type
SMB-JY2	φ1	24.5	SFF-50-1 SYV-50-1
SMB-JY3	φ1.6	25	SFF-50-1.5-1 SYV-50-2-1



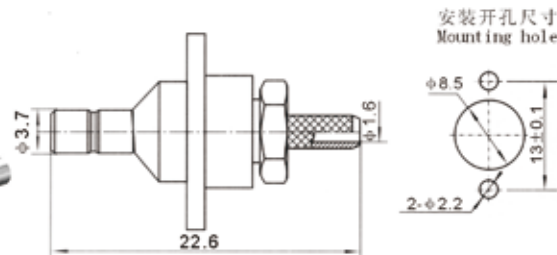
SMB-JYB2



Type	Cable type
SMB-JYB2	RG405/U SM86



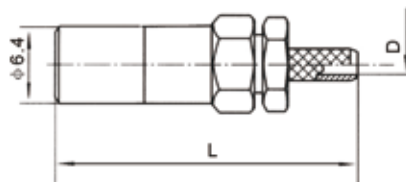
SMB-JF3



Type	Cable type
SMB-JF3	SFF-50-1.5-1 SYV-50-2-1



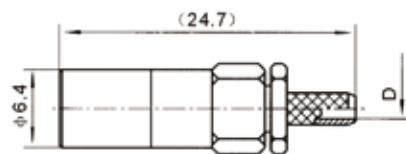
SMB-K2等



Type	L	D	Cable type
SMB-K2	23.2	φ1	SFF-50-1 SYV-50-1
SMB-K3	20.5	φ1.6	SFF-50-1.5-1 SYV-50-2-1



SMB-K2A等

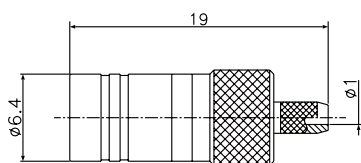


Type	D	Cable type
SMB-K2A	φ1	SFF-50-1 SYV-50-1
SMB-K3A	φ1.6	SFF-50-1.5-1 SYV-50-2-1

SMB系列射频同轴连接器



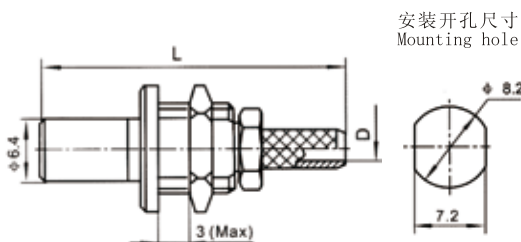
SMB-K2F



Type	Cable type
SMB-K2F	SFF-50-1 RG178B/U



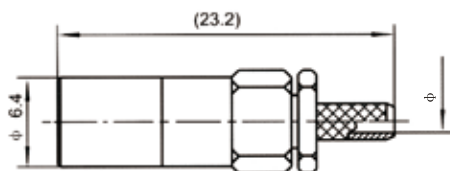
SMB-KY2等



Type	L	D	Cable type
SMB-KY2	23.2	$\phi 1$	SFF-50-1 SYV-50-1
SMB-KY3	25	$\phi 1.6$	SFF-50-1.5-1 SYV-50-2-1



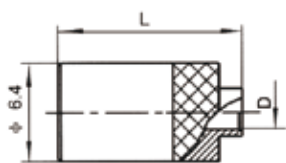
SMB-K2B



Type	Cable type
SMB-K2B	SFF-50-1 SYV-50-1



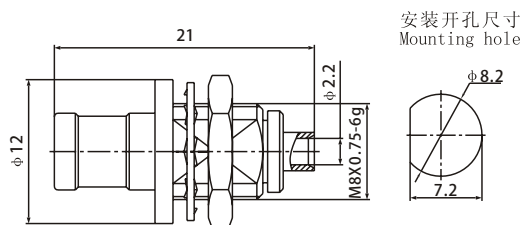
SMB-KB2等



Type	L	D	Cable type
SMB-KB2	(12)	$\phi 2.2$	SFT-50-2-1
SMB-KB3	(13.7)	$\phi 3.7$	SFT-50-3-1



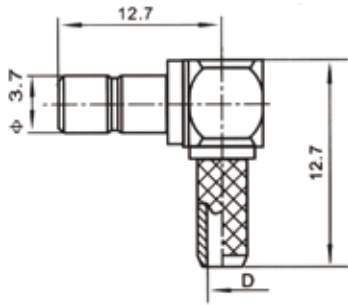
SMB-KYB2



Type	Cable type
SMB-KYB2	RG405/U Sm86



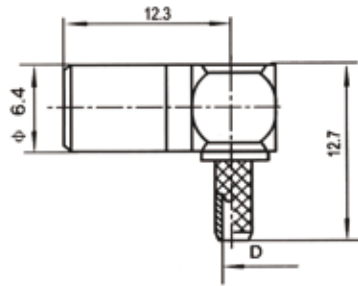
SMB-JW2等



Type	D	Cable type
SMB-JW2	φ1	SFF-50-1 SYV-50-1
SMB-JW3	φ1.6	SFF-50-1.5-1 SYV-50-2-1



SMB-KW2等

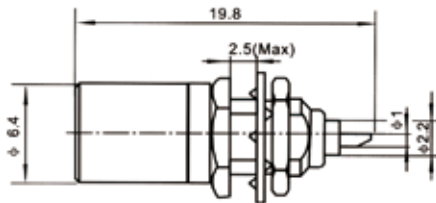


Type	D	Cable type
SMB-KW2	φ1	SFF-50-1 SYV-50-1
SMB-KW3	φ1.6	SFF-50-1.5-1 SYV-50-2-1

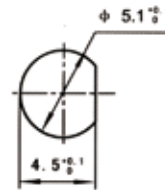
面板连接器



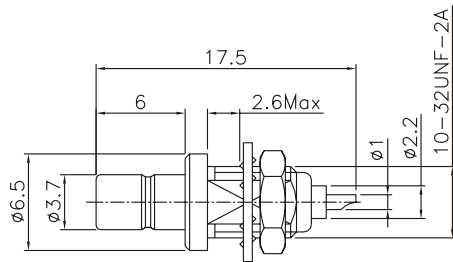
SMB-KY



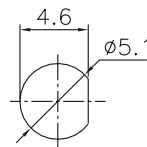
安装开孔尺寸
Mounting hole



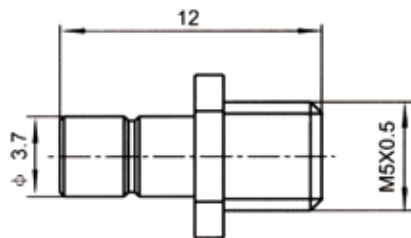
SMB-JY



安装开孔尺寸
Mounting hole



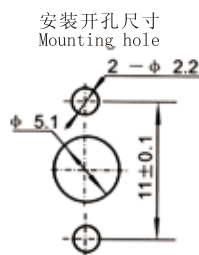
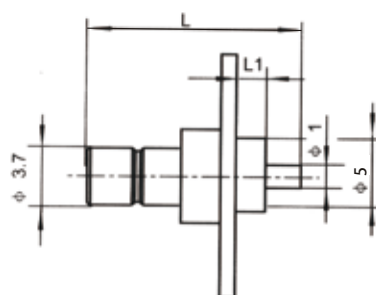
SMB-JYD



SMB系列射频同轴连接器



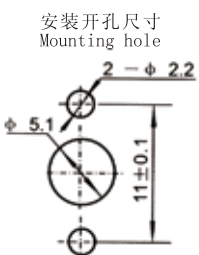
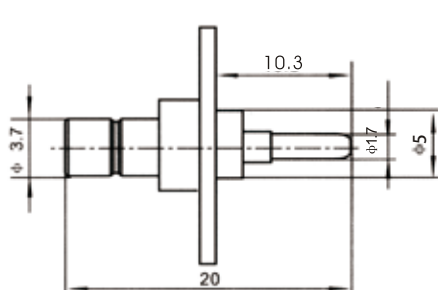
SMB-JFD等



Type	L	L1
SMB-JFD	13.3	2
SMB-JFD1	17.5	2.4
SMB-JFD6	14.3	2.8
SMB-JFD7	15.3	2



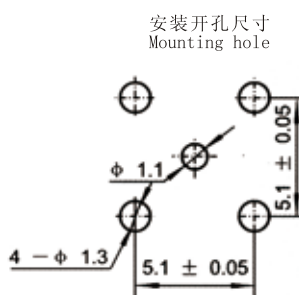
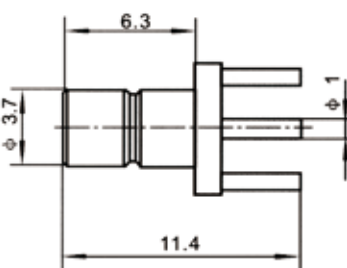
SMB-JFD3



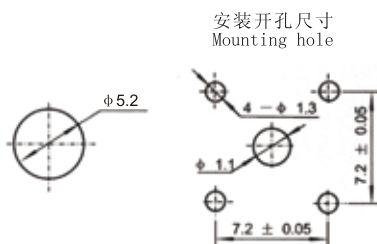
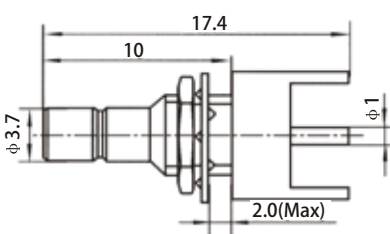
印制电路板连接器



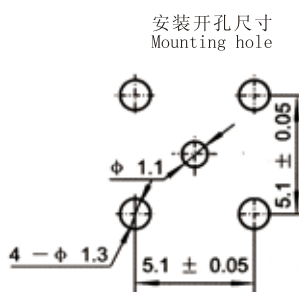
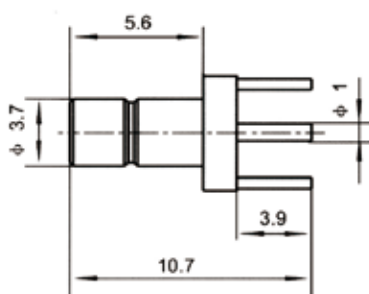
SMB-JHD



SMB-JHD1

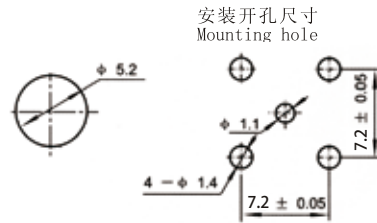
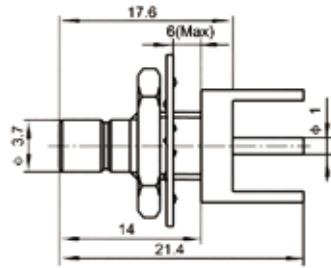


SMB-JHDA

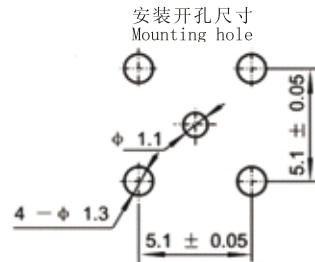
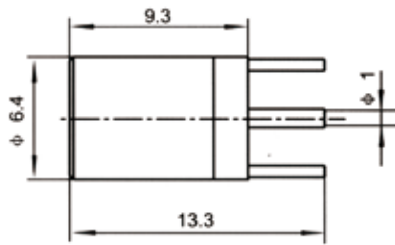




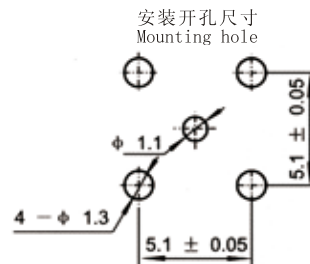
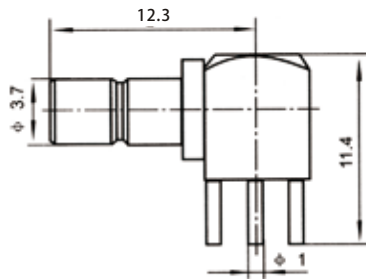
SMB-JHD2



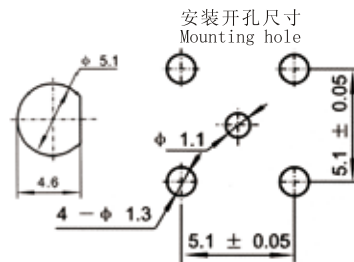
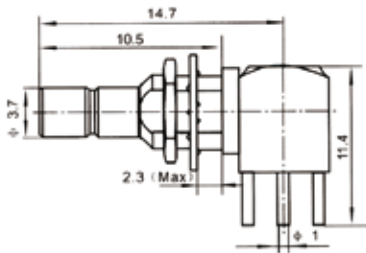
SMB-KHD



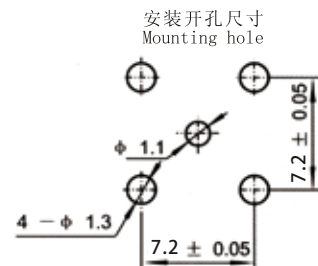
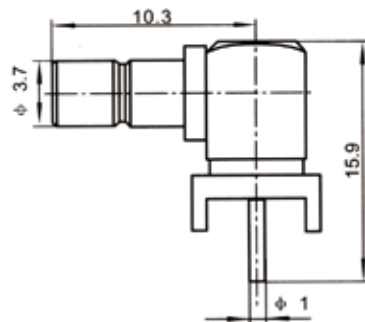
SMB-JWHD



SMB-JWHY



SMB-JWHD2



SMB75系列射频同轴连接器



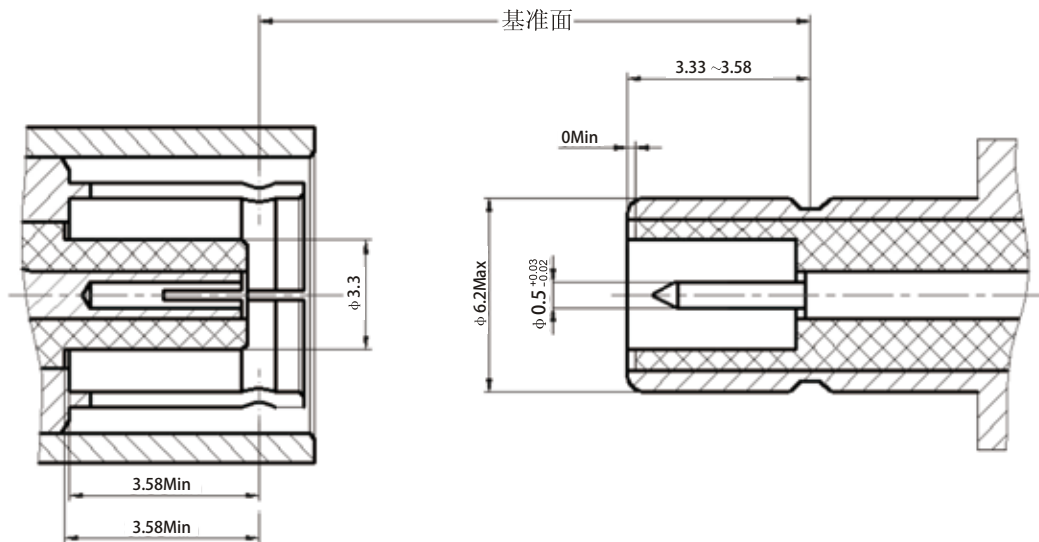
概述

SMB75系列连接器具有推入式连接结构，特性阻抗为75Ω，适用于各种设备高频回路中连接75Ω射频同轴电缆，符合GJB 681A-2002、MIL-C-39012、IEC 60169-10等技术标准。

主要技术特性

温度范围 Temperature range	-55℃~+155℃		绝缘电阻 Insulation resistance	≥1000MΩ	
特性阻抗 Characteristic impedance	75Ω		介质耐压 Dielectric withstanding voltage	750V	
频率范围 Frequency range	0GHz~1GHz		插入力 Insertion force	≤40N	
工作电压 Voltage rating	500V		拔出力 Withdrawal force	≥8N	
接触电阻 Contact resistance	中心导体 Center conductor	≤0.005Ω	电压驻波比 VSWR	直式 Straight	≤1.35
	外导体 Outer conductor	≤0.0025Ω		弯式 Right angle	≤1.65
			寿命 Durability	500 Cycles	

头部配合尺寸 INTERFACING DIMENSIONS



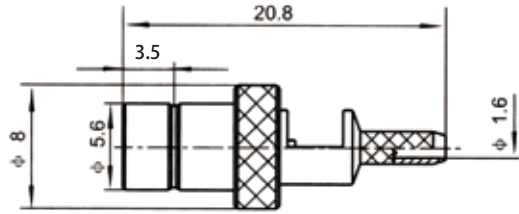
插座 (Jack)

插头 (Plug)

电缆连接器



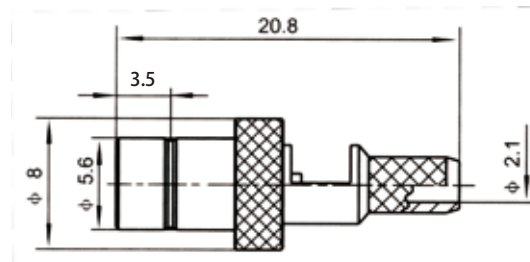
SMB-75J3A



Type	Cable type
SMB-75J3A	SYV-75-2



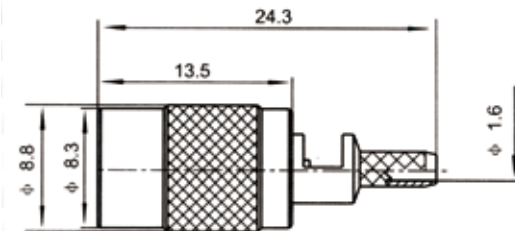
SMB-75J4



Type	Cable type
SMB-75J4	SYV-75-2-1



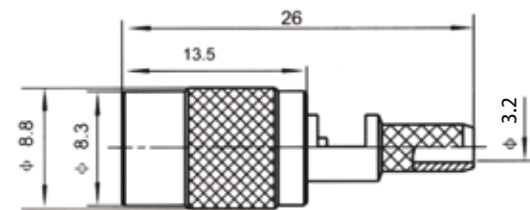
SMB-75K3



Type	Cable type
SMB-75K3	SYV-75-2



SMB-75KY5

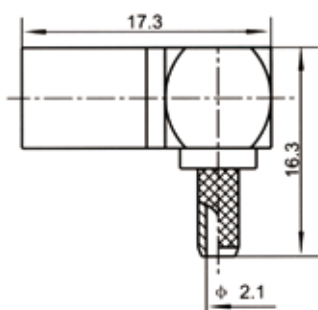


Type	Cable type
SMB-75KY5	SYV-75-3

SMB75系列射频同轴连接器



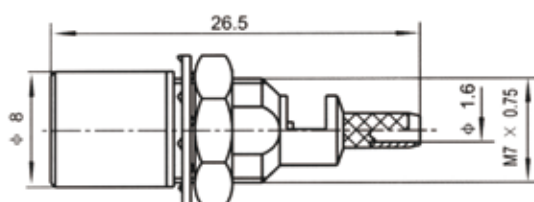
SMB-75KW4A



Type	Cable type
SMB-75KW4A	SYV-75-2-2



SMB-75KY3-1

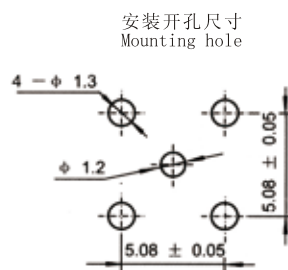
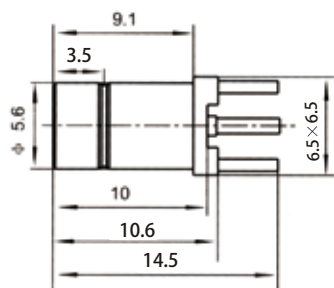


Type	Cable type
SMB-75KY3-1	SFF-75-1.5-1

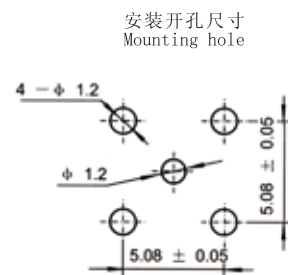
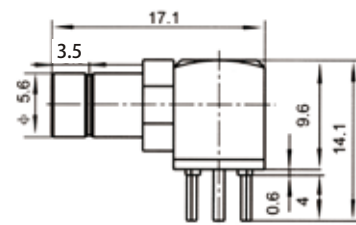
印制电路板连接器



SMB-75JHD

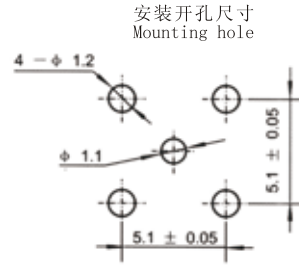
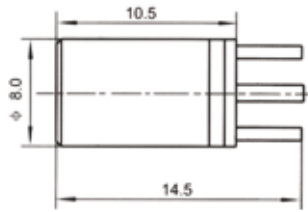


SMB-75JWHD

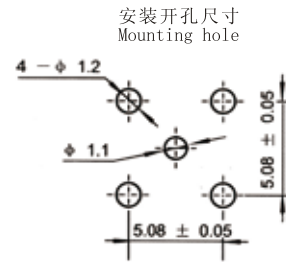
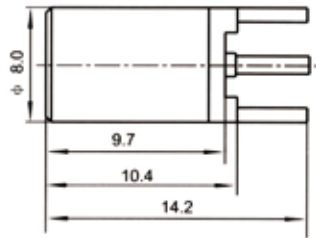




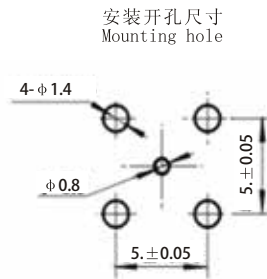
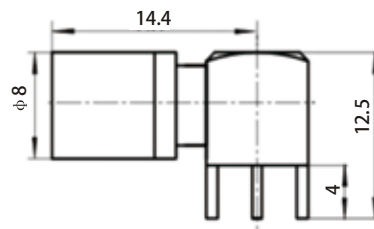
SMB-75KHD



SMB-75KHD2



SMB-75KWHD2



SMB-75KWHD3

