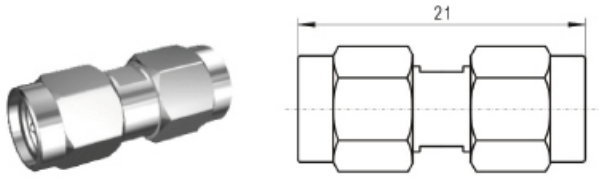


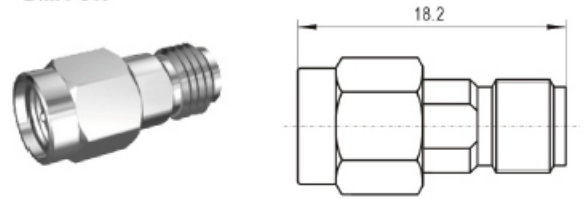
## 外形尺寸

系列内转接器

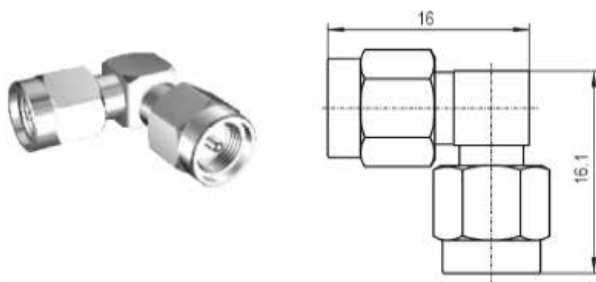
**SMA-JJ**



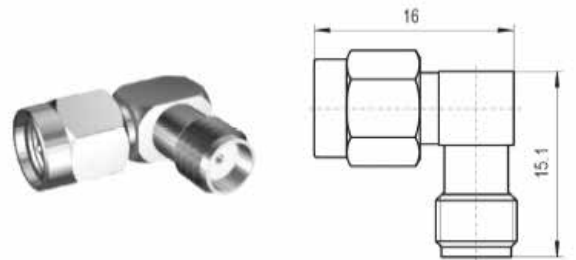
**SMA-JK**



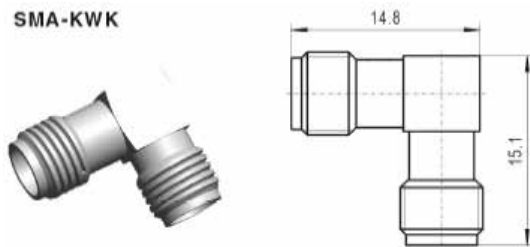
**SMA-JWJ**



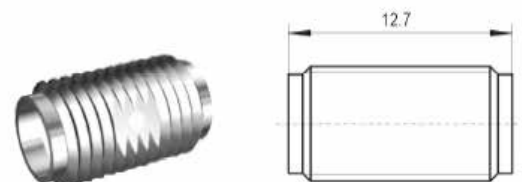
**SMA-JWK**



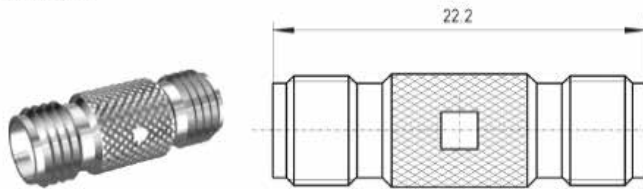
**SMA-KWK**



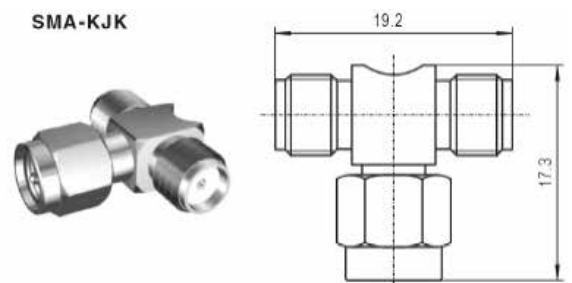
**SMA-KK**



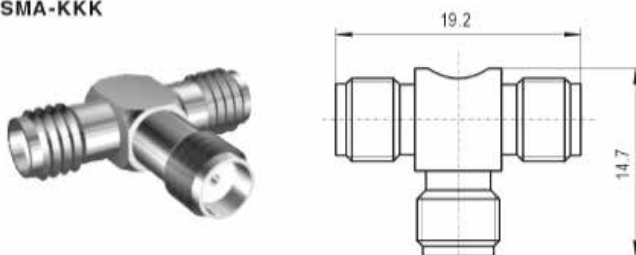
**SMA-KK1**



**SMA-KJK**



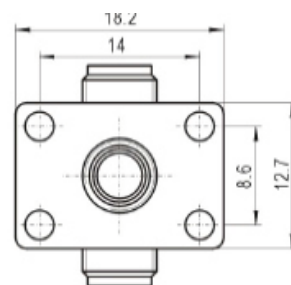
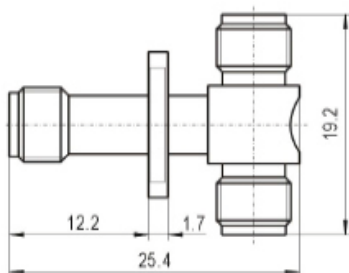
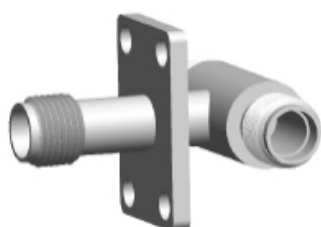
**SMA-KKK**



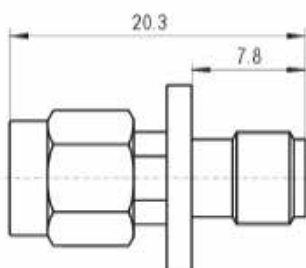
# 射频同轴连接器转接器



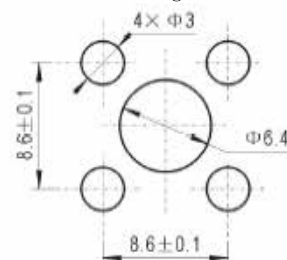
SMA-KKFK



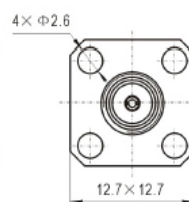
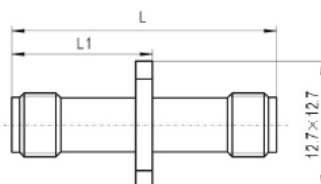
SMA-KFJ



安装开孔尺寸  
Mounting hole

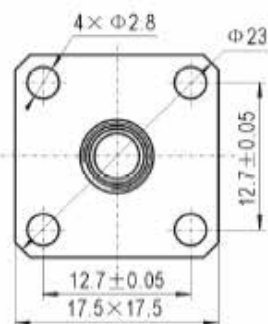
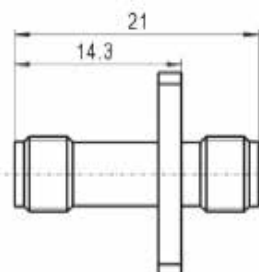
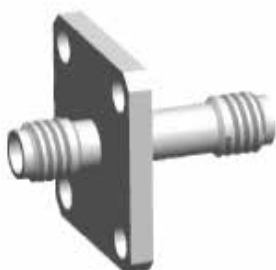


SMA-KFK等

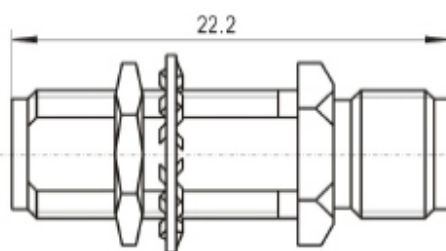


型号	L	L1
SMA-KFK	27	14.35
SMA-KFK-1	19.5	10.6
SMA-KFK-2	16	8.9
SMA-KFK-3	21	14.3
SMA-KFK-4	23.9	14.3

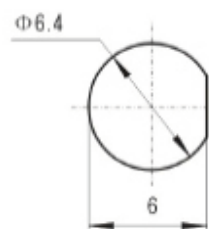
SMA-KFK-3A



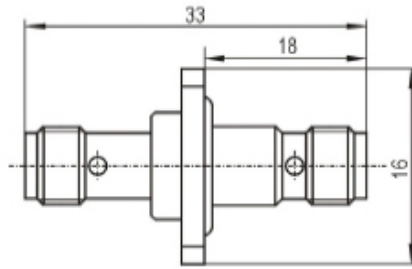
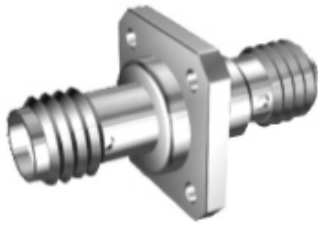
SMA-KYK



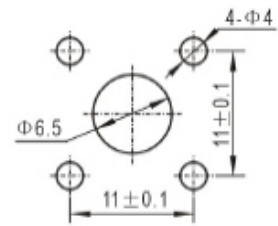
安装开孔尺寸  
Mounting hole



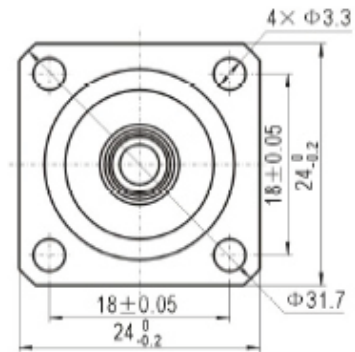
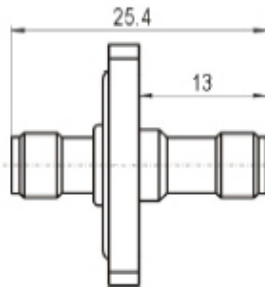
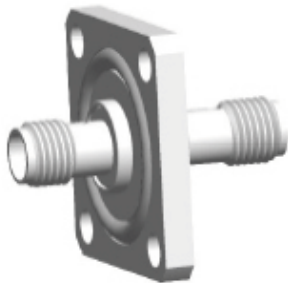
**SMA(M)-KFK**



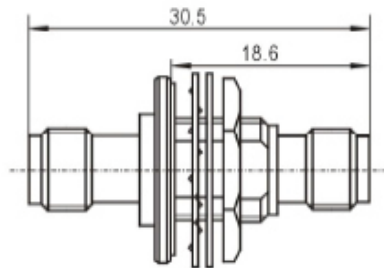
安装开孔尺寸  
Mounting hole



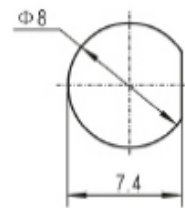
**SMA(M)-KFK1**



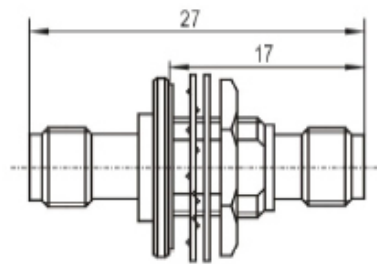
**SMA(M)-KYK**



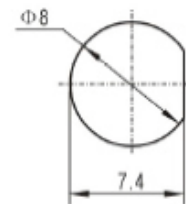
安装开孔尺寸  
Mounting hole



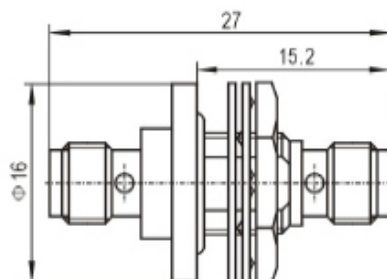
**SMA(M)-KYK1**



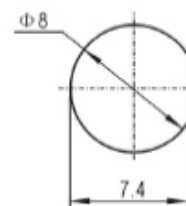
安装开孔尺寸  
Mounting hole



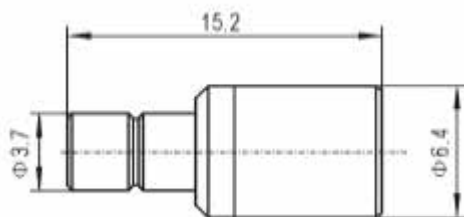
**SMA(M)-KYK2**



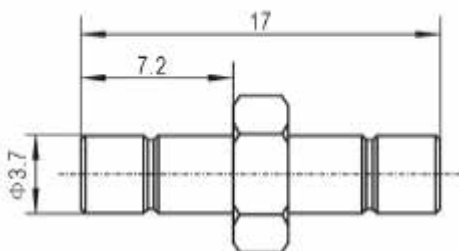
安装开孔尺寸  
Mounting hole



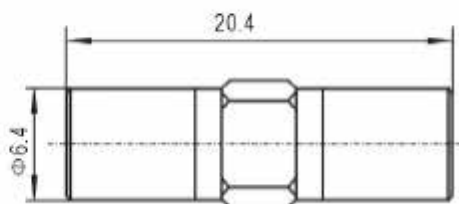
**SMB-JK**



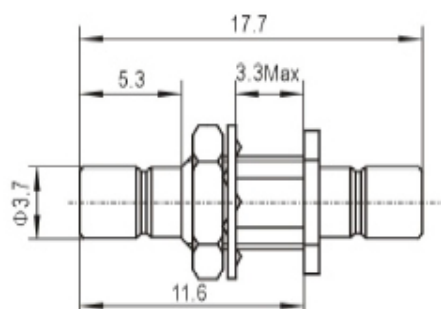
**SMB-JJ**



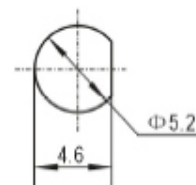
**SMB-KK**



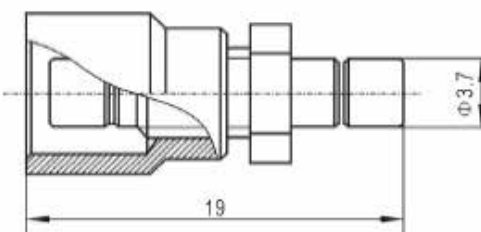
**SMB-JJY1**



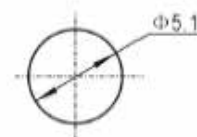
安装开孔尺寸  
Mounting hole



**SMB-JJY2**

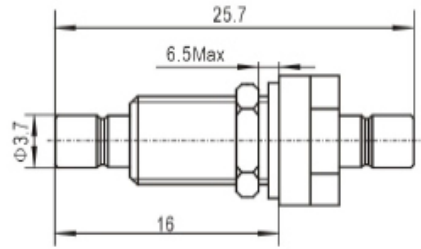


安装开孔尺寸  
Mounting hole

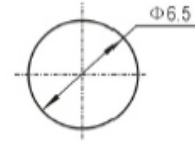




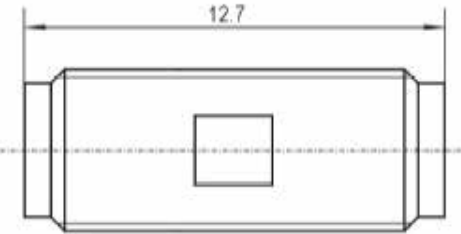
**SMB(M)-JJY**



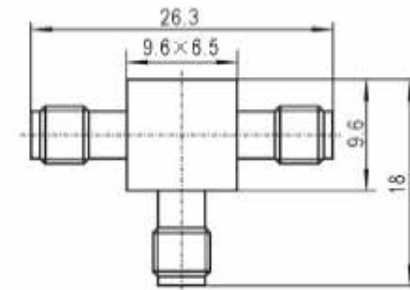
安装开孔尺寸  
Mounting hole



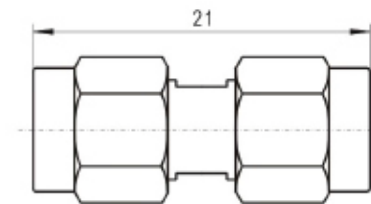
**SSMA-KK**



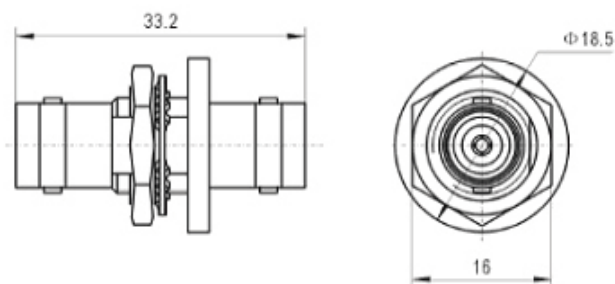
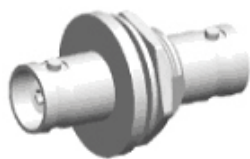
**SSMA-KKK**



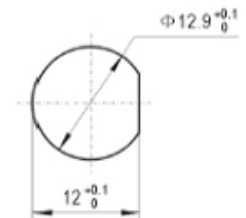
**SSMA-JJ**



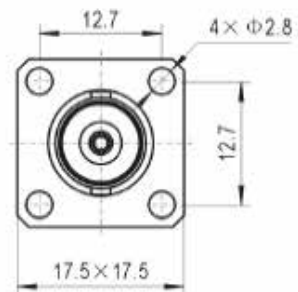
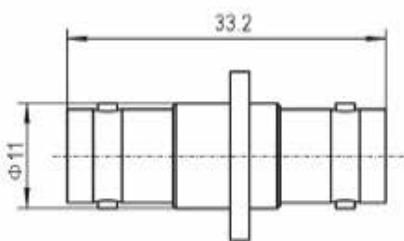
**BNC-50KYK**



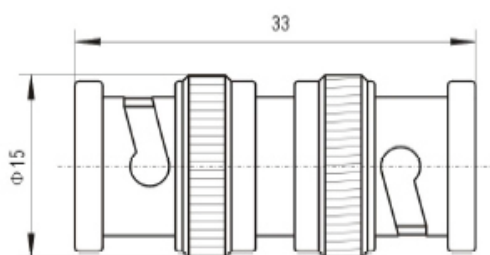
安装开孔尺寸  
Mounting hole



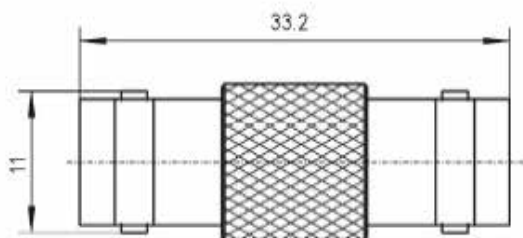
**BNC-50KFK**



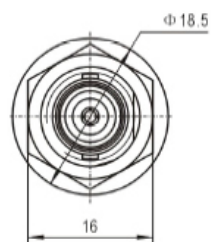
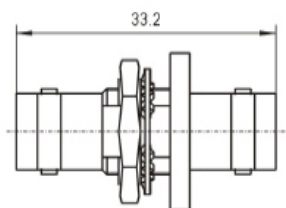
**BNC-50JJ**



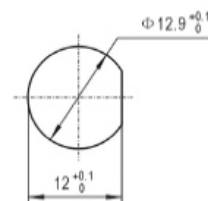
**BNC-50KK**



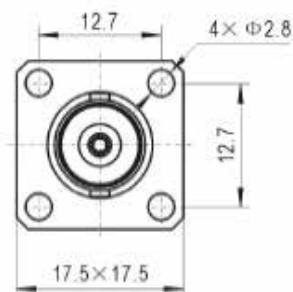
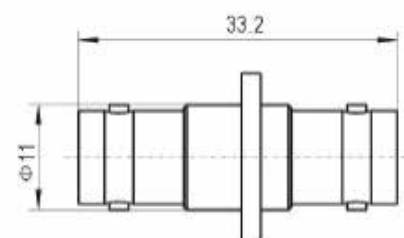
**BNC-75KYK**



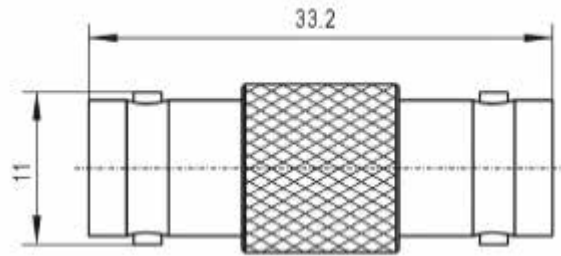
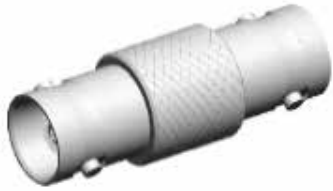
安装开孔尺寸  
Mounting hole



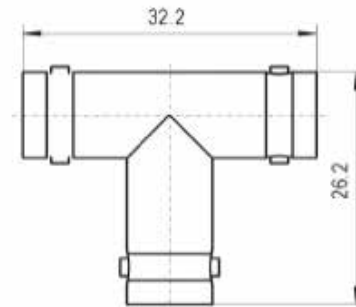
**BNC-75KFK**



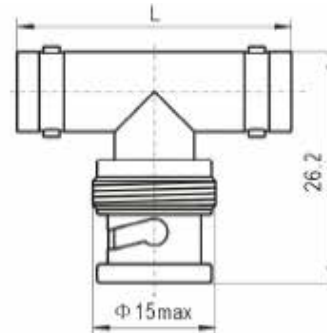
**BNC-75KK**



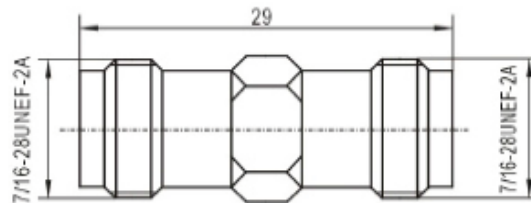
**BNC-50KKK**



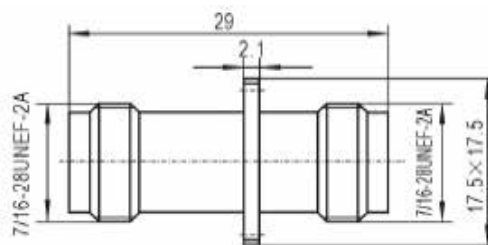
**BNC-50KJK等**



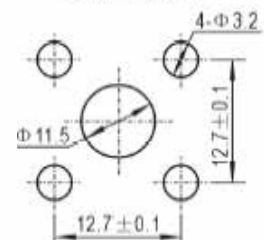
**TNC-KK**



**TNC-KKF**



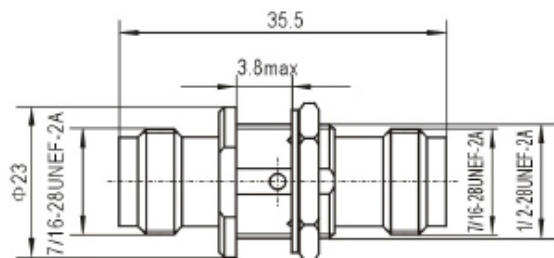
安装开孔尺寸  
Mounting hole



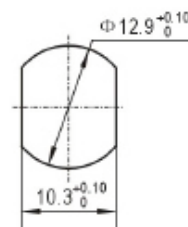
# 射频同轴连接器转接器



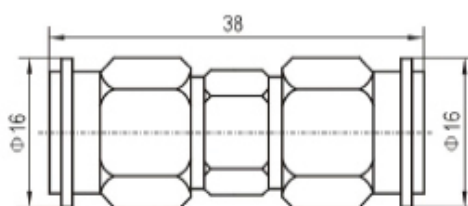
**TNC-50KKY**



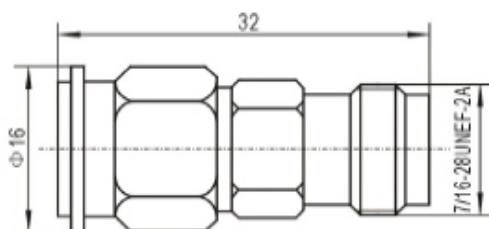
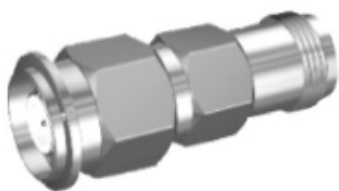
安装开孔尺寸  
Mounting hole



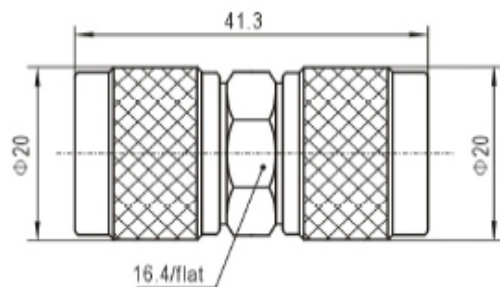
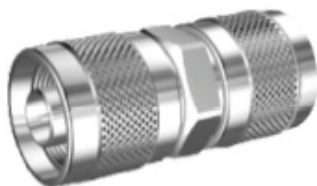
**TNC-JJ**



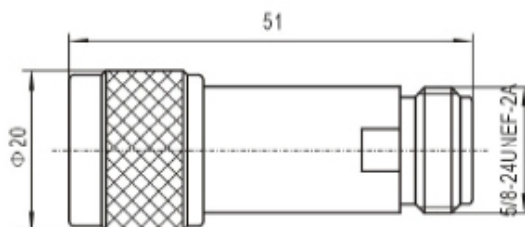
**TNC-JK**



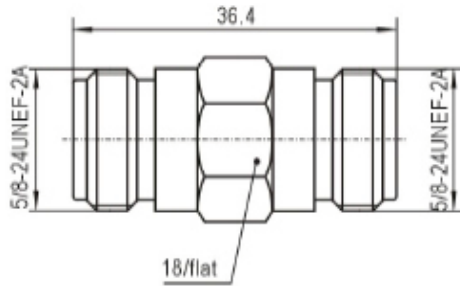
**N-50JJ**



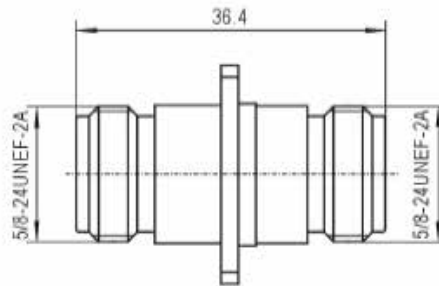
**N-50JK**



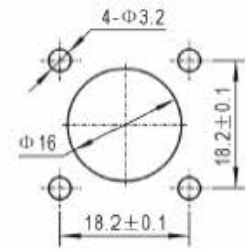
**N-50KK**



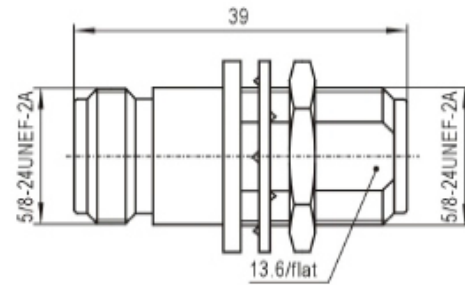
**N-50KKF**



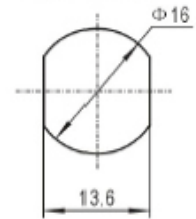
安装开孔尺寸  
Mounting hole



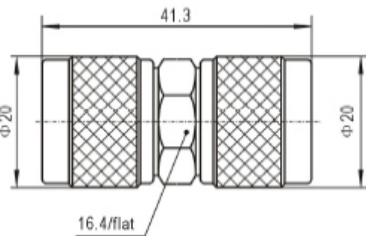
**N-50KKY**



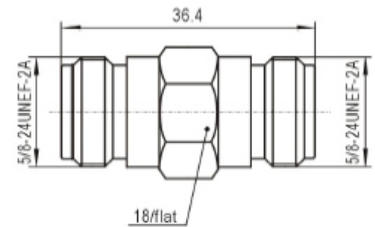
安装开孔尺寸  
Mounting hole



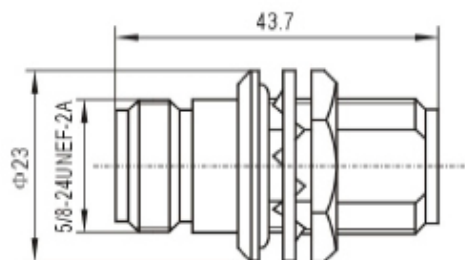
**N-75JJ**



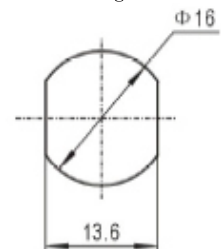
**N-75KK**



**N(M)-50KKY**



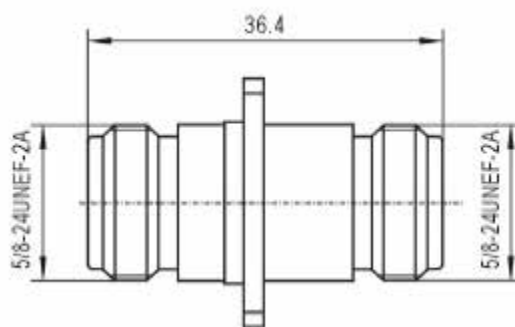
安装开孔尺寸  
Mounting hole



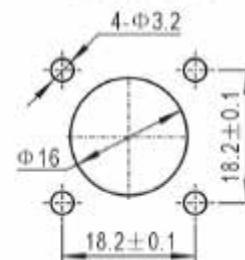
# 射频同轴连接器转接器



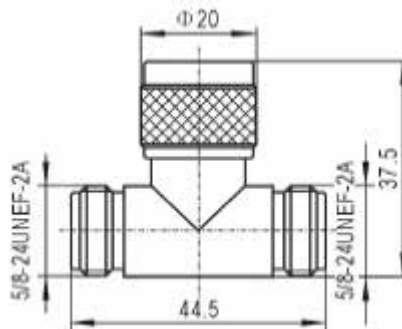
**N-75KKF**



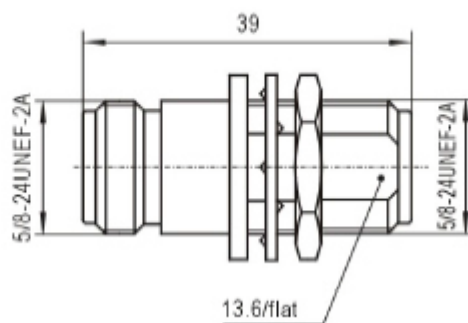
安装开孔尺寸  
Mounting hole



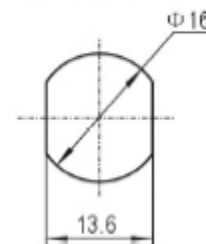
**N-75KJK**



**N-75KKY**



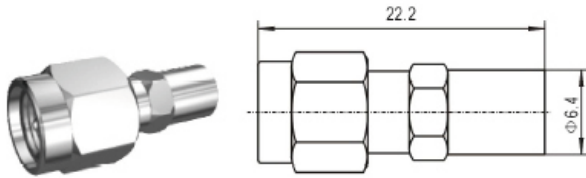
安装开孔尺寸  
Mounting hole



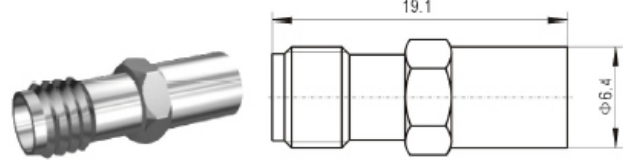


## 系列间转接器

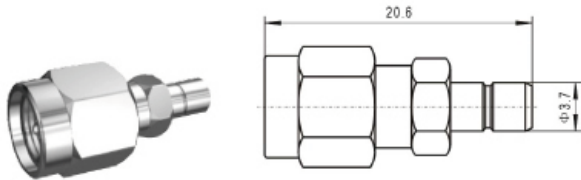
SMA/SMB-JK



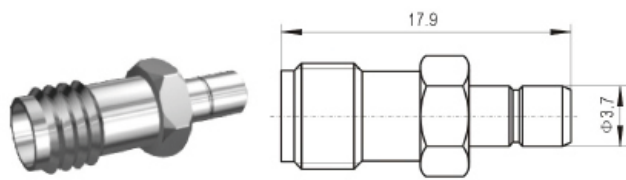
SMA/SMB-KK



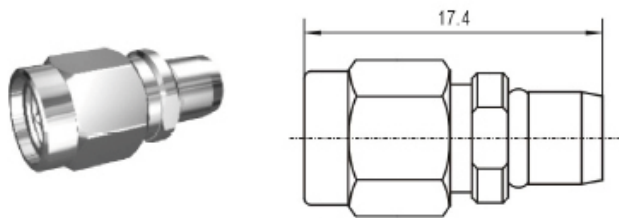
SMA/SMB-JJ



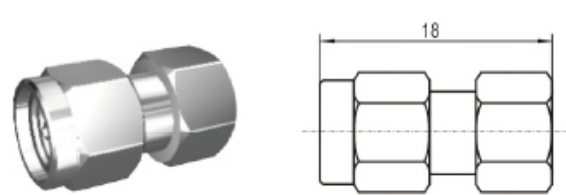
SMA/SMB-KJ



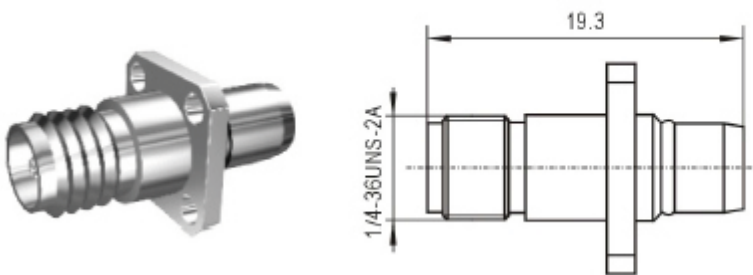
SMA/BMA-JJ



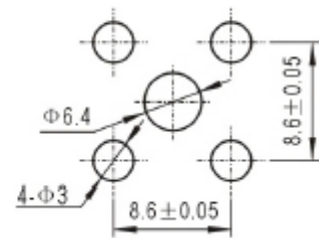
SMA/BMA-JK



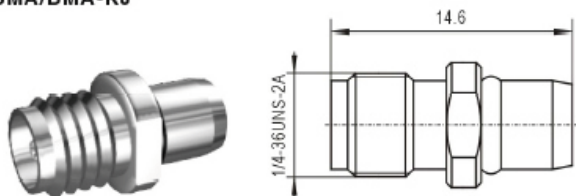
SMA/BMA-KFJ



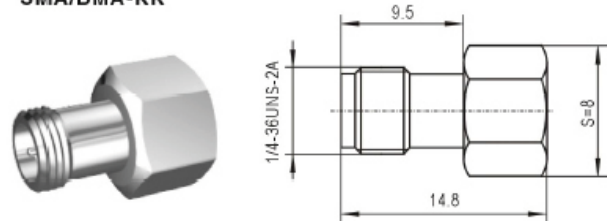
安装开孔尺寸  
Mounting hole



SMA/BMA-KJ



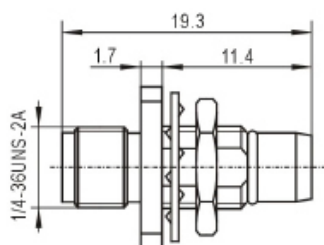
SMA/BMA-KK



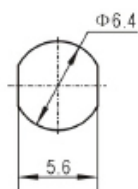
# 射频同轴连接器转接器



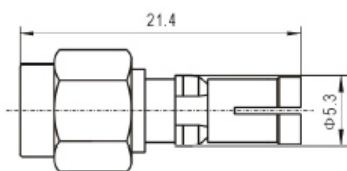
SMA/BMA-KYJ



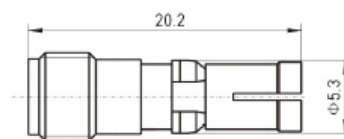
安装开孔尺寸  
Mounting hole



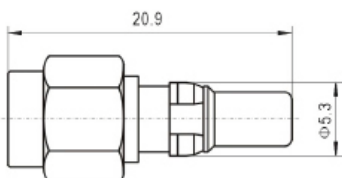
SMA/D4-JJ



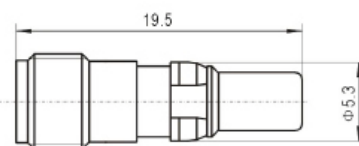
SMA/D4-KJ



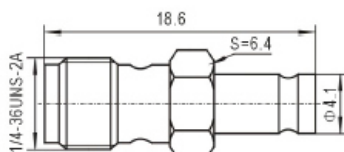
SMA/D4-JK



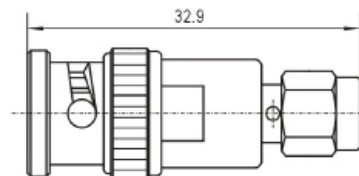
SMA/D4-KK



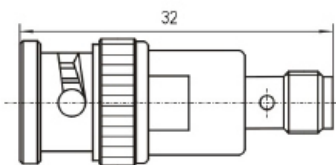
SMA/SAA-KK



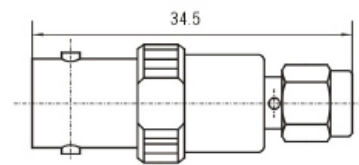
BNC/SMA-JJ



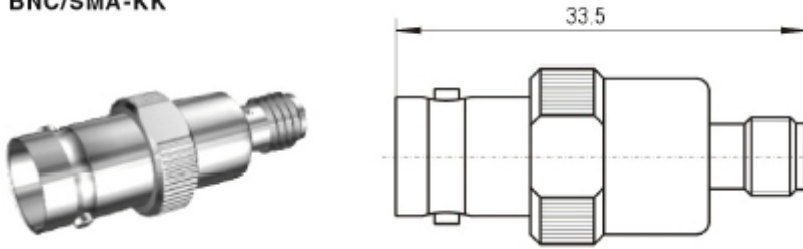
BNC/SMA-JK



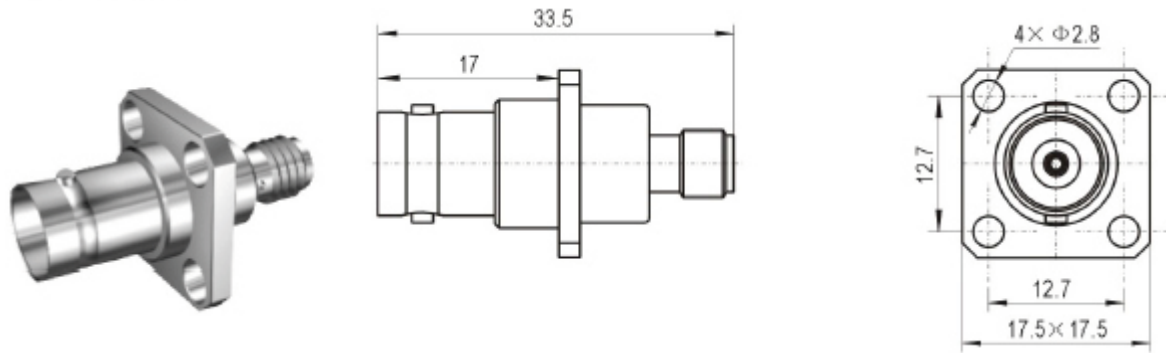
BNC/SMA-KJ



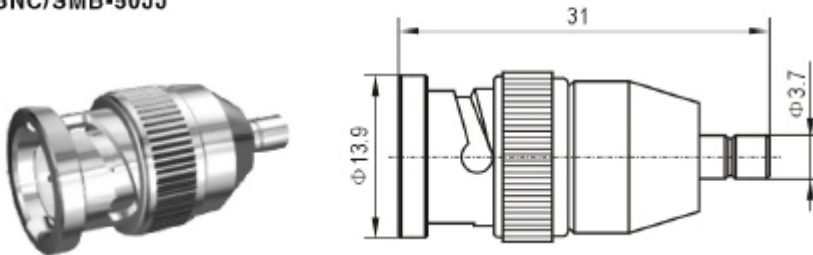
**BNC/SMA-KK**



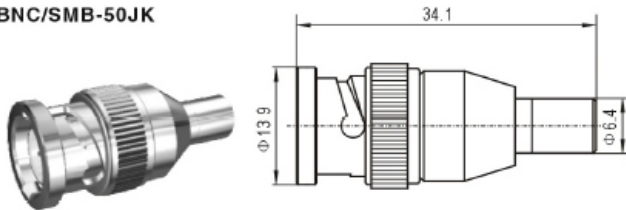
**BNC/SMA-KFK**



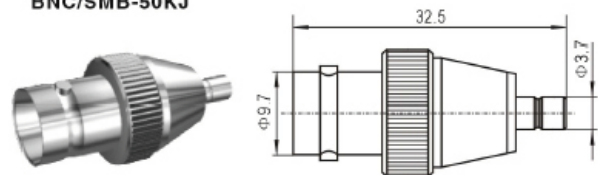
**BNC/SMB-50JJ**



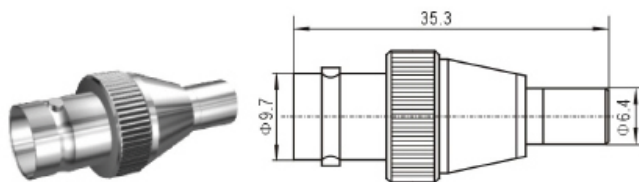
**BNC/SMB-50JK**



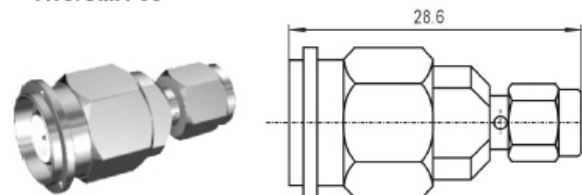
**BNC/SMB-50KJ**



**BNC/SMB-50KK**



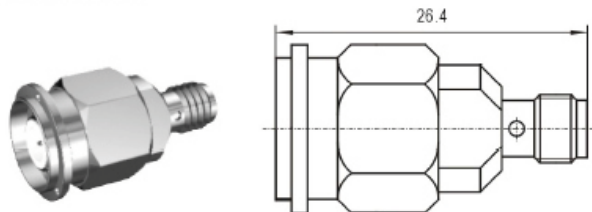
**TNC/SMA-JJ**



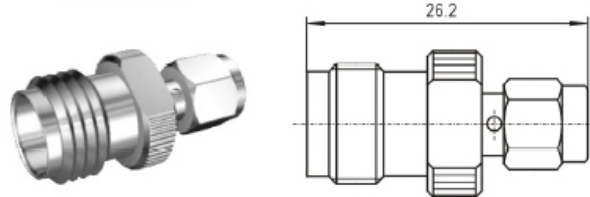
# 射频同轴连接器转接器



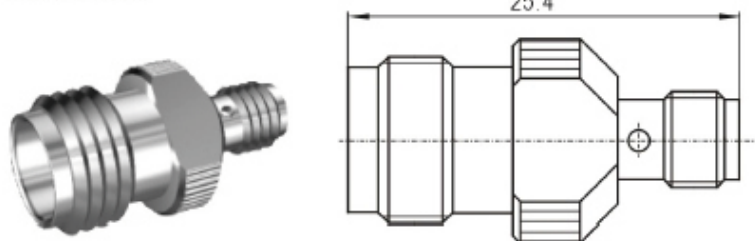
TNC/SMA-JK



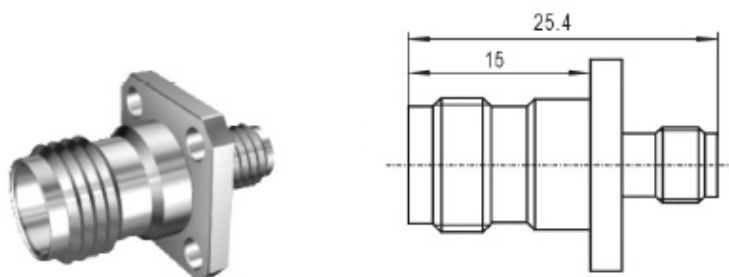
TNC/SMA-KJ



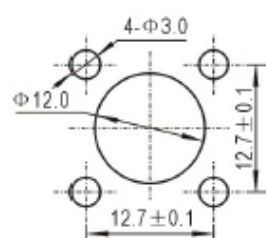
TNC/SMA-KK



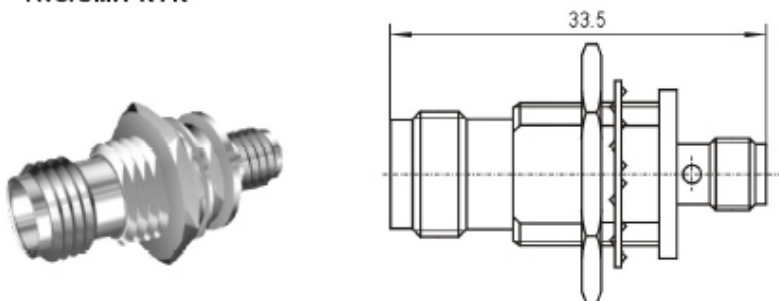
TNC/SMA-KFK



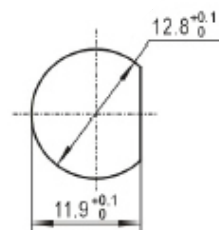
安装开孔尺寸  
Mounting hole



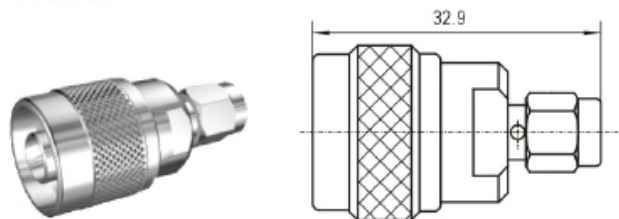
TNC/SMA-KYK



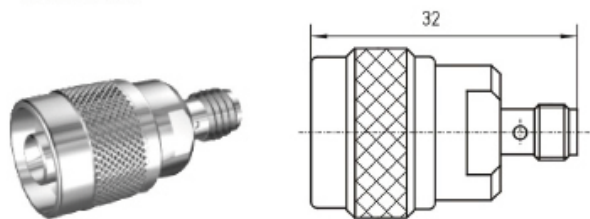
安装开孔尺寸  
Mounting hole



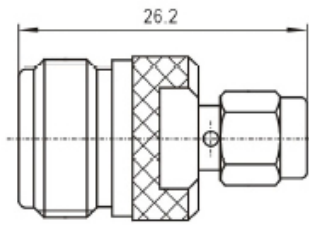
N/SMA-JJ



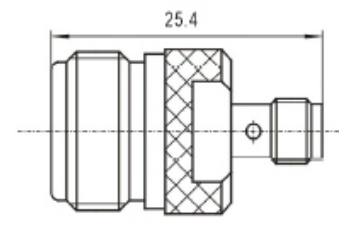
N/SMA-JK



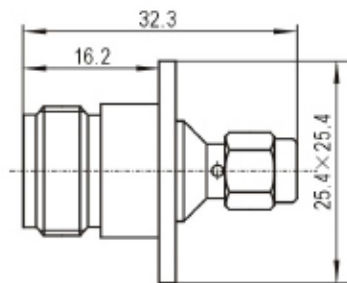
N/SMA-KJ



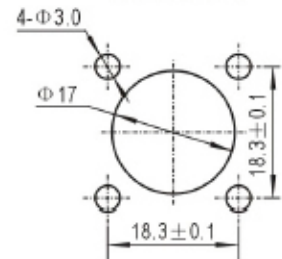
N/SMA-KK



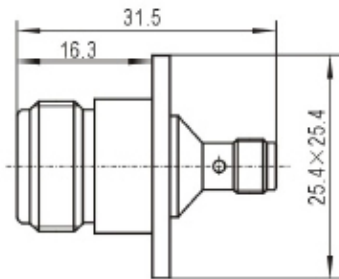
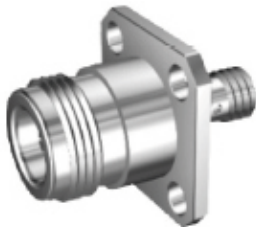
N/SMA-KFJ



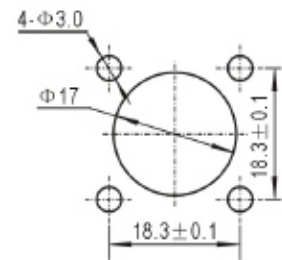
安装开孔尺寸  
Mounting hole



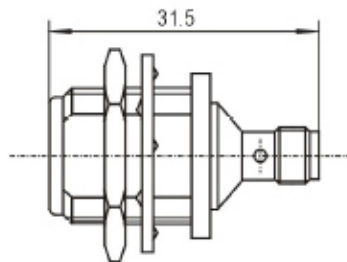
N/SMA-KFK



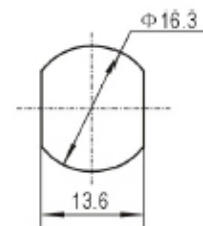
安装开孔尺寸  
Mounting hole



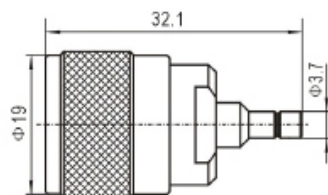
N/SMA-KYK



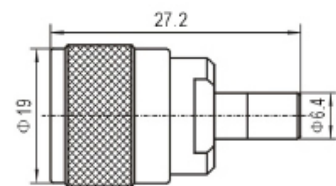
安装开孔尺寸  
Mounting hole



N/SMB-JJ



N/SMB-JK

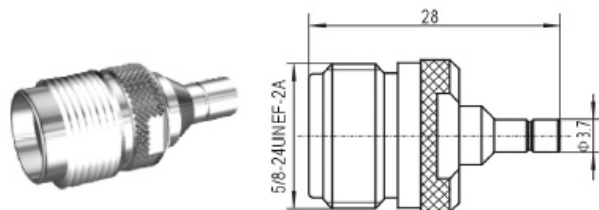




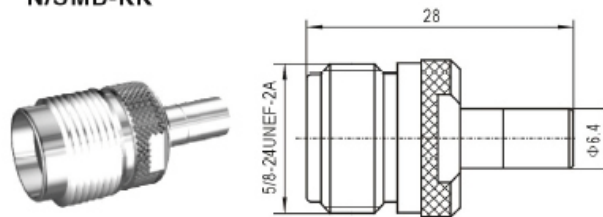
# 射频同轴连接器转接器



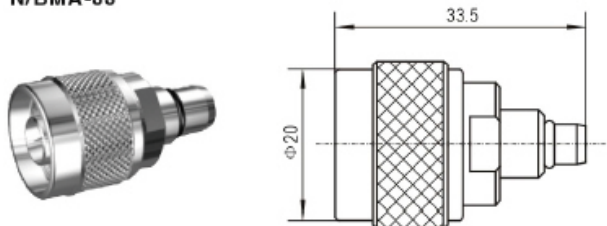
N/SMB-KJ



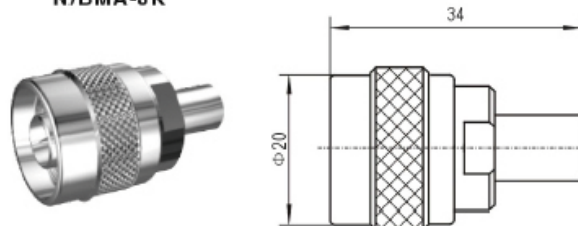
N/SMB-KK



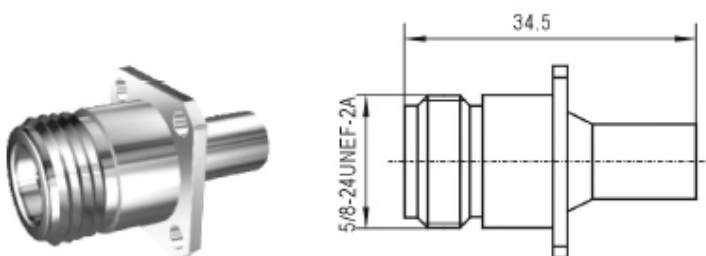
N/BMA-JJ



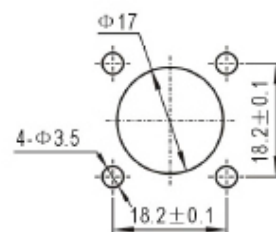
N/BMA-JK



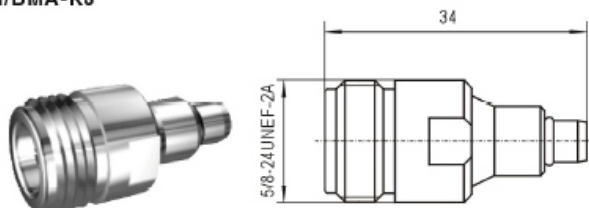
N/BMA-KFK



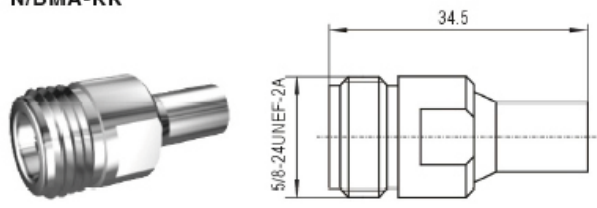
安装开孔尺寸  
Mounting hole



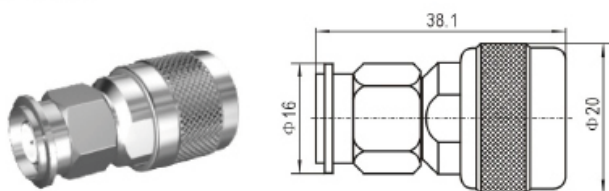
N/BMA-KJ



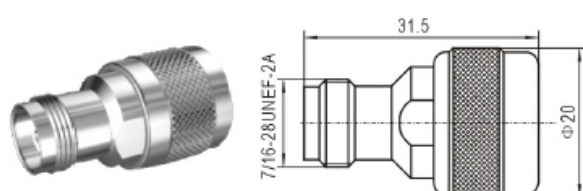
N/BMA-KK



N/TNC-JJ

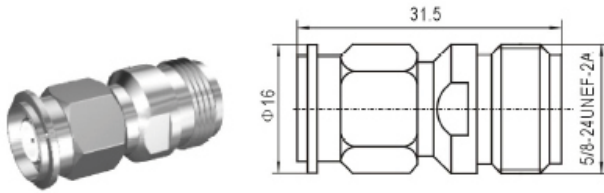


N/TNC-JK

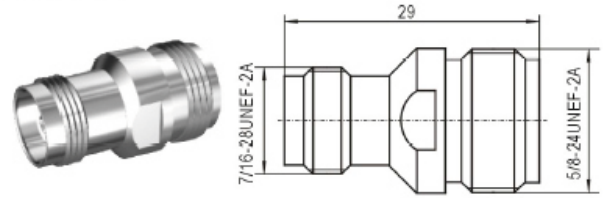




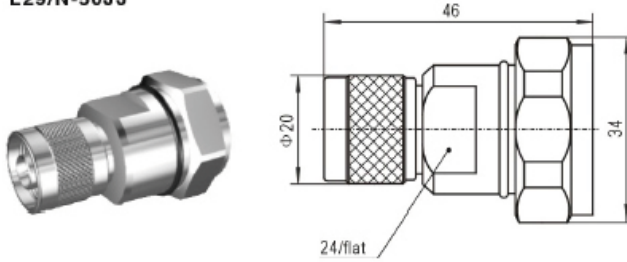
N/TNC-KJ



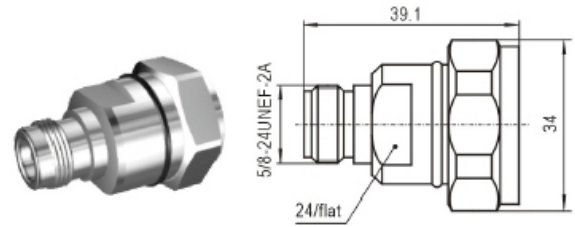
N/TNC-KK



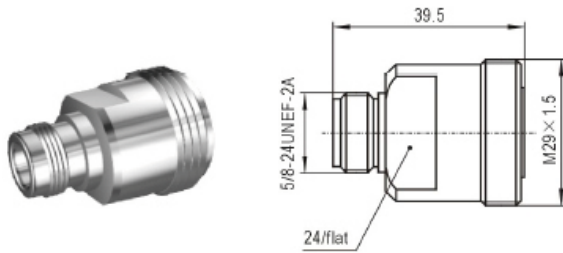
L29/N-50JJ



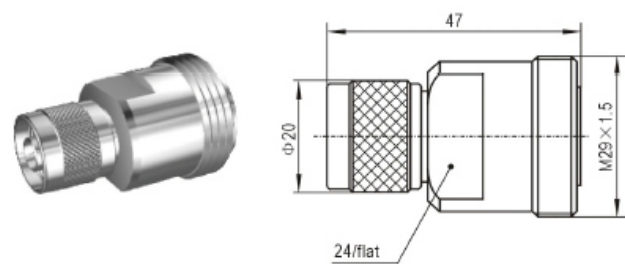
L29/N-50JK



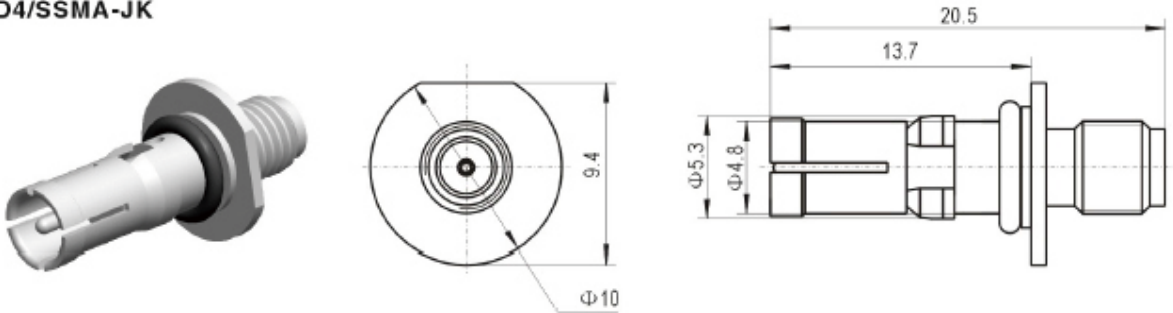
L29/N-50KK



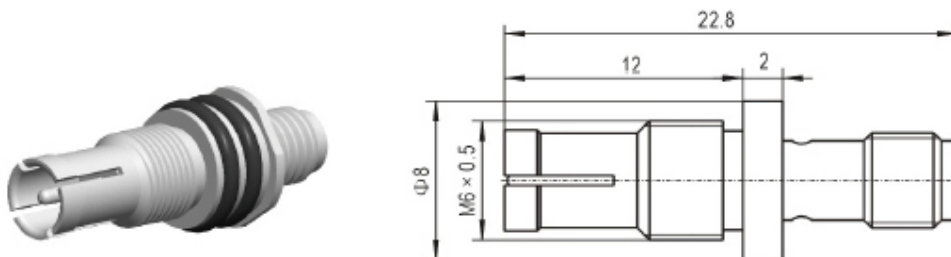
L29/N-50KJ



D4/SSMA-JK



D4/SSMA-JK-1

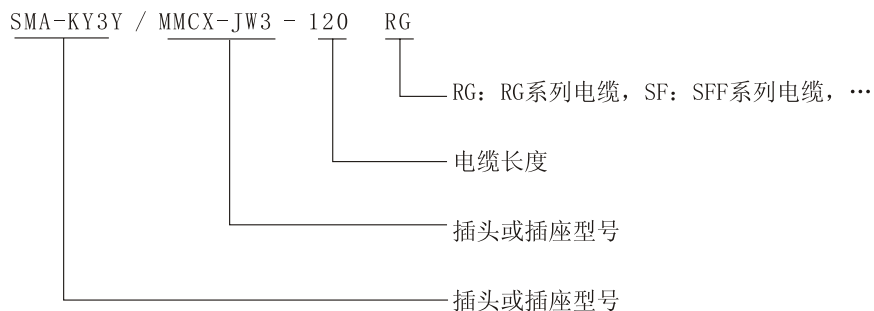


## 概述

射频同轴电缆组件广泛应用于各种电子通讯设备和仪器仪表中。深圳市通茂电子有限公司可以根据客户的要求，采用专门的技术、先进的测试手段、高效的电缆组件生产线，为客户量身订做各种型号、各种规格的射频同轴电缆组件。



## 射频同轴电缆组件的命名

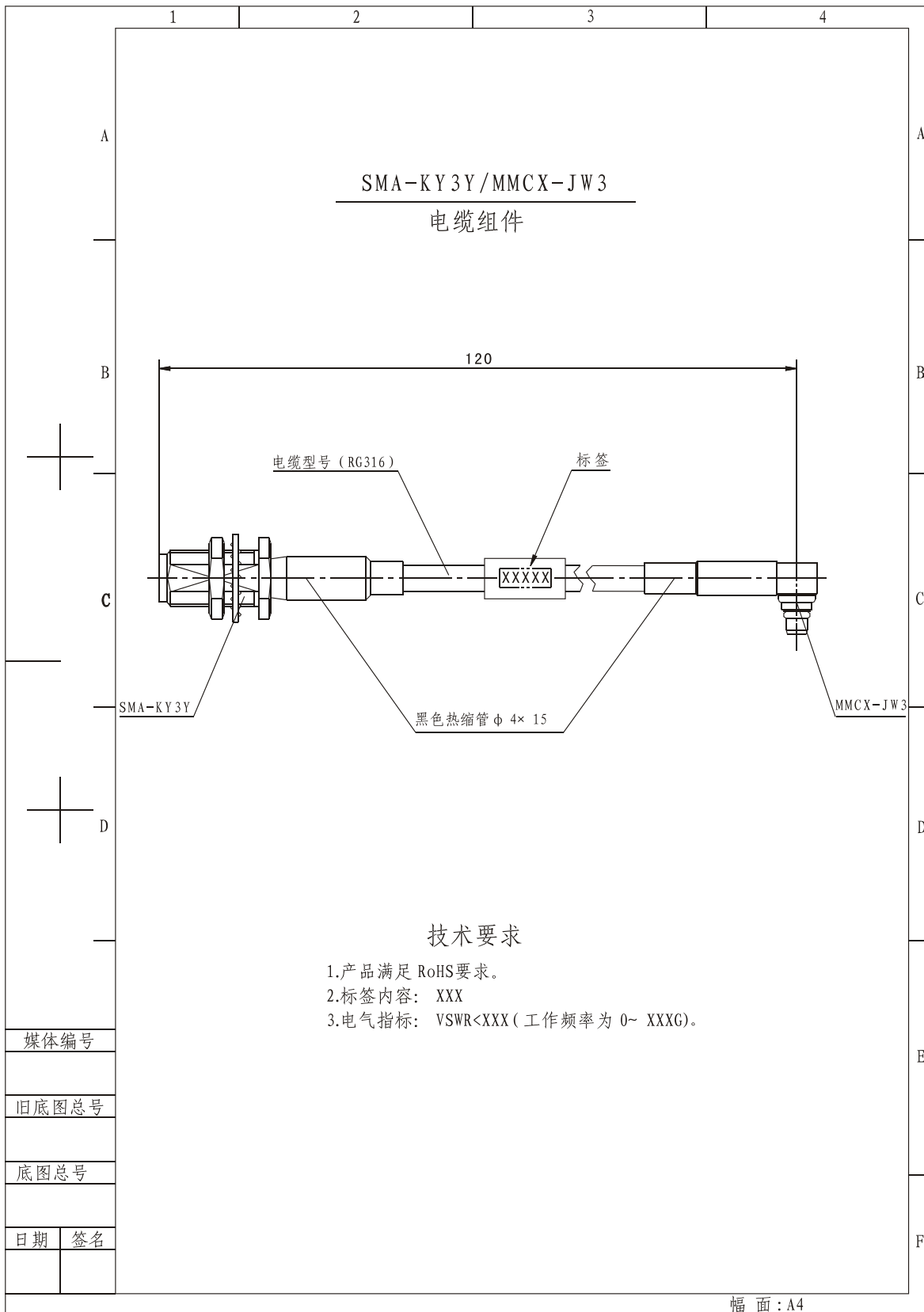


## 射频同轴电缆组件的订货方式

■ 在订购电缆组件时，你只需在发订单时随附一张简图并注明以下四项即可：

1. 连接器型号
2. 所用电线型号
3. 所需电线的长度
4. 相关技术要求

详见附图



# 常用射频同轴电缆尺寸一览表



电缆代号	电缆型号	特性阻抗 $\Omega$	直径尺寸 $\phi$ (mm)				
			内导体		绝缘子外径	屏蔽层外径	护套外径
			构成	外径			
2	SYV-50-1	50	7×0.09	0.27	0.87±0.05	1.45S	1.9±0.1
	SFF-50-1						
	RG-178/U	50	7×0.1	0.3	0.91	1.37S	2.01±0.1
	RG-196/U	50	7×0.1	0.3	0.86	1.37S	2.03
	SFF-75-1	75	单芯	0.17	0.87	1.37S	1.8
3	SYV-50-2-1	50	7×0.16	0.48	1.5±0.1	2.1S	2.9±0.1
	SFF-50-1.5-1	50	7×0.18	0.54	1.5±0.1	2.1S	2.55±0.15
	SFF-50-1.5-2	50	7×0.18	0.54	1.5	2.70D	3.2
	RG-174/U	50	7×0.16	0.48	1.52	2.24S	2.54
	RG-316/U	50	7×0.17	0.51	1.52	2.06S	2.59
	RG-188/U	50	7×0.18	0.54	1.52	2.06S	2.79
	SFF-75-1.5-1	75	7×0.1	0.3	1.5		2.55
	SFF-75-1.5-2	75	7×0.1	0.3	1.5		3.2
	SYV-75-2	75	7×0.08	0.24	1.5	2.1S	2.9±0.1
	RG-179B/U	75	7×0.1	0.3	1.6	2.13S	2.54
3A	RG-316DT	50	7×0.17	0.51	1.6	2.22D	2.8
4	SFF-50-2-1	50	单芯	0.73	2.2	-S	3.3±0.2
	SFF-75-2	75	单芯	0.41	2.2		3.2
4A	SYV-50-2-2	50	7×0.23	0.68	2.2	3.1D	4
	SFF-50-2-2	50	单芯	0.73	2.2	-D	4
5	SFF-50-3-1	50	单芯	0.93	3	-S	4.5±0.25
	SYV-50-3	50	单芯	0.9	3	3.85S	5.0±0.25
	RG-141A/U	50	单芯	0.99	2.95	3.71S	4.83
	RG-58C/U	50	单芯	0.9	2.95	3.81S	4.95
	RG-303/U	50	单芯	0.99	2.95	3.71S	4.32
	RG-58/U	53.5	单芯	0.81	2.95	3.60S	4.95
	SYV-5-3-41	75	7×0.17	0.51	2.95	3.85S	5.0±0.25
	SFF-75-3-1	75	单芯	0.55	3	-S	4.5
5A	SFF-75-3-2	75	单芯	0.55	3	-D	5.5
	SFF-50-3-2	50	单芯	0.93	3	-D	5.5D
	RG-55/U	53.5	单芯	0.81	2.95	4.20D	5.23
	RG-142B/U	50	单芯	0.99	2.95	4.34D	4.95
	RG-223/U	50	单芯	0.89	2.95	4.47D	5.49
	RG-400/U	50	19×0.18	0.99	2.95	4.34D	4.95

说明:

- 1、“屏蔽层外径”一栏中的字母含义为: S:单编织屏蔽层 D:双编织屏蔽层 2、\*:铠装电缆:RG-XXX/U为国外电缆型号,  
3、国内软电缆和半刚电缆执行标准为SJ1132-77、SJ498-83 4、国外软电缆和半刚电缆执行标准为MIL-C-17-F



# 常用射频同轴电缆尺寸一览表

电缆代号	电缆型号	特性阻抗 $\Omega$	直径尺寸 $\phi$ (mm)				
			内导体		绝缘子外径	屏蔽层外径	护套外径
			构成	外径			
6	RG-59B/U	75	单芯	0.58	3.71	4.85S	6.15
	RG-140/U	75	单芯	0.64	3.71	4.47S	5.92
	RG-5A/U	50	单芯	1.29	4.6	6.30D	8.33
	RG-212/U	50	单芯	1.44	4.7	6.30D	8.43
	RG-222/U	50	单芯	1.41	4.7	6.30D	8.43
	RG-21/U	53	单芯	1.29	4.7	6.30D	8.43
	RG-6A/U	75	单芯	0.72	4.7	6.30D	8.43
7	SYV-50-7-1	50	7×0.75	2.26	7.3±0.25	8.5S	10.2±0.30
	RG-165/U	50	7×0.80	2.4	7.25	8.64S	10.4
	RG-213/U	50	7×0.75	2.26	7.25	8.64S	10.29
	RG-215/U	50	7×0.75	2.26	7.25	8.64S	12.07*
	RG-8/U	52	7×0.72	2.17	7.24	8.20S	10.29
	RG-10/U	52	7×0.72	2.17	7.24	8.20S	12.07*
	SYV-75-7	75	7×0.4	1.2	7.25±0.25	8.50S	10.2±0.30
	RG-11/U	75	7×0.4	1.2	7.24	8.20S	10.29
	RG-144/U	75	7×0.45	1.35	7.25	8.38S	10.4
	RG-214/U	50	7×0.75	2.26	7.25	9.14D	10.8
	RG-225/U	50	7×0.79	2.38	7.24	9.14D	10.92
	RG-9/U	51	7×0.72	2.17	7.11	8.70D	10.67
RG-21/U	53	单芯	1.29	4.7	6.30D	8.43	
8	SYV-50-7-2	50	7×0.75	2.26	7.3±0.25	9.30D	11.2±0.30
9	SYV-50-9	50		2.85	9.0±0.30	10.2	12.4±0.40
	RG-119/U	50		2.59	8.43	10.52D	11.81
10	SYV-50-12	50		3.6	11.5±0.4	12.8	15±0.50
	RG-34/U	71	7×0.72	2.17	11.56	12.9	15.88
	RG-217/U	50		2.69	9.4	11.76D	15.62
11	SYV-50-15	50		4.62	15±0.50	16.4	19±0.50
12	SYV-75-3	75		0.51	3±0.15	3.85S	5±0.25
13	SYV-75-5-1/2	75		0.72、0.78	4.60±0.20	5.5S	7.1±0.30
15	SYV-75-7	75	7×0.40	1.2	7.3±0.25	8.50S	10.2±0.30
16	SYV-75-9	75		1.37	9±0.30	10.2	12.4±0.40
17	SYV-75-15	75		2.46	15±0.50	16.4	19±0.50
18	SYV-75-17	75		2.85	17.3±0.70	19.3	22.2±0.60
19	SYV-100-7			0.6	7.3±0.25	8.5	10.2±0.30

说明:

1、“屏蔽层外径”一栏中的字母含义为：S:单编织屏蔽层D:双编织屏蔽层      2、\*:铠装电缆:RG-XXX/U为国外电缆型号。  
3、国内软电缆和半刚电缆执行标准为SJ1132-77、SJ498-83      4、国外软电缆和半刚电缆执行标准为MIL-C-17-F

# 常用射频同轴电缆尺寸一览表



电缆代号	电缆型号	特性阻抗 $\Omega$	直径尺寸 $\phi$ (mm)				
			内导体		绝缘子外径	屏蔽层外径	护套外径
			构成	外径			
20	SIV-7 SDY-7			0.3	6.6±0.20		9.6
21	SDY-4			0.64	3.7±0.25		6.2±0.40
22	SXM-50-7	50		1.68	7.3±0.30		9.9±0.60
23	SXH-50-9	50		1.4	8.7±0.40		14.5±0.90
24	SXH-75-5	75		0.78	5.4±0.30		9.2±0.60
25	SXM-75-5	75		0.68	5.5±0.30		8±0.50
26	SX-75-6	75		0.78	6±0.30		6.8±0.40
27	SYV-50-5-1	50		1.37	4.6±0.20	5.5S	7±0.30
28	SYV-50-5-2	50		1.37	4.6±0.20	6.2D	7.8±0.30
29	SYV-50-17	50		5.2	17.3±0.70	19.3	22.2±0.60
30	SYV-50-5-23-1/2	50		6.85	23±0.10	25.4±0.10	28.8±0.70
31	SYV-50-5-28-1/2		7×0.08	8.25	28±0.10	30±0.10	34.5±0.8
32	SYV-75-2	75		0.24	1.5±0.10	2.1S±0.10	2.9±0.1
	SYV-75-2-1	75		0.34	2.1		3.4
33	SYV-75-12	75		1.92	11.5±0.40	12.8	15±0.5
34	SYV-75-23-1/2	75		3.18	23±0.10	25±0.10	28.8±0.70
35	SYV-75-28-1/2	75		4.5	28±1.0	30±0.10	34.5±0.80
41	SRR-50-0.6	50		0.21	0.61±0.05	0.95	1.6±0.10
42	SRR-50-1	50		0.29	0.87±0.05	1.3	2.0±0.10
43	SRR-50-1.5	50		0.47	1.5±0.10	2	3.0±0.10
44	SRR-50-2	50		0.68	2.2±0.10	2.7	4.0±0.30
45	SRR-50-3	50		0.9	2.95±0.10	3.5	5.0±0.30
46	SRR-50-4	50		1.08	3.70±0.20	4.6	6.0±0.40
47	SRR-50-5	50		1.37	4.6±0.20	5.4	7.06±0.60
48	SRR-50-7	50		2.28	7.3±0.20	8.3	10.3±0.60
101	SDV-50-3-4	50		1.2	3.0±0.15		5.0±0.25
102	SDV-50-5-4	50		1.83	4.6±0.20		7.0±0.3
103	SDV-50-7-4	50		2.83	7.3±0.25		10.0±0.4

说明:

- 1、“屏蔽层外径”一栏中的字母含义为：S:单编织屏蔽层D:双编织屏蔽层 2、\*:铠装电缆:RG-XXX/U为国外电缆型号。
- 3、国内软电缆和半刚电缆执行标准为SJ1132-77、SJ498-83 4、国外软电缆和半刚电缆执行标准为MIL-C-17-F



# 常用射频同轴电缆尺寸一览表

电缆代号	电缆型号		特性阻抗 $\Omega$	直径尺寸 $\phi$ (mm)				
				内导体		绝缘子外径	屏蔽层外径	护套外径
				构成	外径			
104	SDV-50-9-4		50		3.5	9.0±0.3		12.6±0.5
105	SDV-50-9-1		50		3.5	9.0±0.3		12.6±0.5
106	SDV-50-15-4		50		6	15.0±0.4		19.2±0.7
107	SDV-50-15-1		50		6	15.0±0.4		19.2±0.7
109	SDV-50-37-1		50		16.5	37.0±1.0		44.4±1.5
111	SDV-75-3-4		75		0.74	3.0±0.15		5.0±0.25
112	SDV-75-5-4		75		1.13	4.6±0.25		7.0±0.3
113	SDV-75-7-4		75		1.74	7.3±0.25		10.0±0.4
114	SDV-75-9-4		75		2.14	9.0±0.30		12.6±0.5
115	SDV-75-9-1		75		2.14	9.0±0.30		12.6±0.5
116	SDV-75-15-4		75		3.8	15.0±0.4		19.2±0.7
117	SDV-75-15-1		75		3.8	15.0±0.4		19.2±0.7
118	SDV-75-23-1		75		10			
119	SDV-75-37-1		75		1.83	38.0±1.0		44.4±1.5
121	SDV-75-3-3		75		2.73			
122	SDV-50-5-3		50		3.72	4.23		7
123	SDV-50-7-3		50		6.2	6.33±0.20		10
124	SDV-50-9-3		50		9.5	8.27		12.5
125	SDV-50-15-3		50			15		18
126	SCV-50-23-3		50			2.12		30
127	SDV	-50-37-3	50		16.5	34		45
	SUV							
128	SDV	-50-52-3	50		22	48.8		61
	SUV							
129	SDV	-50-80-3	50		36	74		93
	SUV							
说明: 1、“屏蔽层外径”一栏中的字母含义为: S:单编织屏蔽层D:双编织屏蔽层      2、*:铠装电缆:RG-XXX/U为国外电缆型号. 3、国内软电缆和半刚电缆执行标准为SJ1132-77、SJ498-83                      4、国外软电缆和半刚电缆执行标准为MIL-C-17-F								

# 常用射频同轴电缆尺寸一览表



电缆代号	电缆型号		特性阻抗 $\Omega$	直径尺寸 $\phi$ (mm)				
				内导体		绝缘子外径	屏蔽层外径	护套外径
				构成	外径			
134	SD-50-16-3		50		6.25	13.7		23
135	SD-50-22-3		50		9.5	21.7		30
136	SD-50-40-3		50		18.5	39.04		51
137	SD-50-79-3		50		35	75.7		94
142	SDV-75-5-3		75		1.13	4.33		7
143	SDV-75-7-3		75		1.65	6.25		10
144	SDV-75-9-3		75		2.22	8.6		12.5
145	SDV-75-15-3		75		3.76	13.1		18
146	SDV-75-23-3		75		6	21.2		30
147	SDV	-75-37-3	75		10	34		45
	SUV							
148	SDV	-75-52-3	75					
	SUV							
149	SDV	-75-80-3	75		24	74		93
	SUV							
301	SUJ-50-3-5		50		7×0.38	3	3.5	5
302	SUJ-50-5-5		50		7×0.61	4.8	5.3	7.3
303	SUJ-50-7-5		50		2.65	7.3±0.20	7.8	10.5
309	SUY-50-9-3		50		3.18	8.2	10.7	12.5
310	SUY-50-7-3		50		2.57	6.65	8.5	10.3
311	SUY-50-5.3-3		50		1.87	4.85	6.35	7.7
337	SLDY-75-15		75		3.2	15	19	
338	SLDY-75-23		75		6	23	30	
339	SLDY-75-37		75		10	37	44.7	

说明:

- 1、“屏蔽层外径”一栏中的字母含义为：S:单编织屏蔽层D:双编织屏蔽层      2、\*:铠装电缆:RG-XXX/U为国外电缆型号。  
 3、国内软电缆和半刚电缆执行标准为SJ1132-77、SJ498-83      4、国外软电缆和半刚电缆执行标准为MIL-C-17-F

电缆代号	电缆型号	特性阻抗 $\Omega$	直径尺寸 $\Phi$ (mm)			
			内导体外径	绝缘子外径	屏蔽层外径	护套外径
	LMR 195	50	0.94	2.79	3.53	4.95
	LMR 240	50	1.42	3.81	4.52	6.1
	LMR 240F	50	7×0.473	3.81	4.52	6.1
	LMR 400	50	2.74	7.24	8.1	10.29
	LMR 400F	50	7×0.913	7.24	8.1	10.29
	LMR 600	50	4.47	11.56	12.5	14.99
	3D-FB	50	1.07	3	3.5	5.4
	5D-FB	50	1.8	5	5.9	7.5
	7D-FB	50	2.6	7.3	8.2	9.8
	8D-FB	50	2.8	7.8	8.8	10.4
	10D-FB	50	3.5	10	11	13
	12D-FB	50	4.4	12.4	13.3	15.6
	MICRO-COAX (UFA205A)	50	1.45	3.95	4.6	5.21
	MICRO-COAX (UFA210A)	50	1.5	4.05	4.69	5.33
	MICRO-COAX (UFA210B)	50	19×0.29	4.05	4.69	5.33
	MICRO-COAX (UFA311A)	50	2.3	6.25	7.3	7.9

## 半刚、半柔电缆

电缆代号	电缆型号	特性阻抗 $\Omega$	直径尺寸 $\Phi$ (mm)			
			内导体		绝缘子外径	屏蔽层外径
			构成	外径		
2	SFT-50-2-51	50	单芯	0.51	1.67	2.2
	SFT-75-2	75	单芯	0.27	1.67	2.2
	RG405/U (SM86)	50	单芯	0.51	1.67	2.2
3	SFT-50-3-51	50	单芯	0.93	3	3.6
	SFT-75-3	75	单芯	0.55	3	3.6
	RG-402/U (SM141)	50	单芯	0.92	3	3.6
5	SFT-50-5-2	50	单芯	1.6	5.2	6
	SFT-75-5-3	75	单芯	0.95	5.3	6