

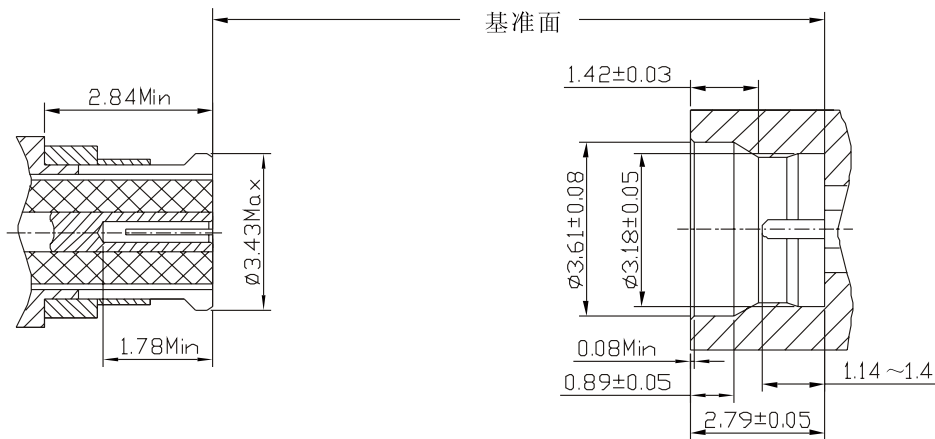
## 概述

SMP系列射频同轴连接器是一种超小型盲配式射频同轴连接器，它具有体积小、重量轻、抗震性能优越、电磁屏蔽性能好、射频性能优良的特点，是一种可靠性高，并可模块化使用的连接器。

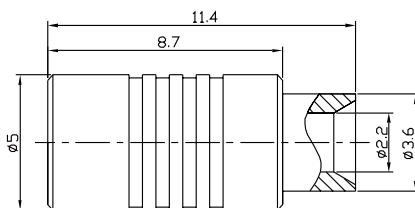
## 主要技术特性

温度范围 Temperature range		-55℃~+155℃	工作电压 Voltage rating	170V (AC)
特性阻抗 Characteristic impedance		50 Ω	绝缘电阻 Insulation resistance	≥1000MΩ
频率范围 Frequency range		0GHz~40GHz	介质耐压 Dielectric withstanding voltage	500V (AC)
接触电阻 Contact resistance	中心导体 Center conductor	≤0.006 Ω	电压驻波比 VSWR	≤1.5
	外导体 Outer conductor	≤0.002 Ω		

## 头部配合尺寸 INTERF ACE MA TING DIMENSIONS



SMP-BJB2A

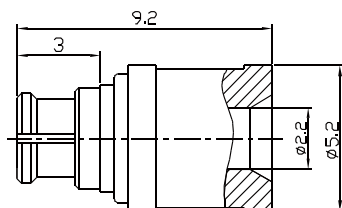


Type	Cable type
SMP-BJB2A	RG405/Sm86

# SMP系列射频同轴连接器

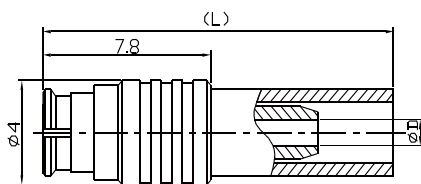


SMP-KB2A



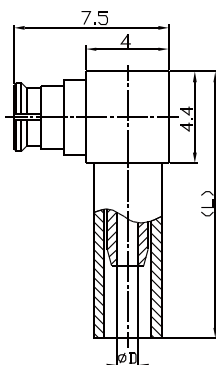
Type	Cable type
SMP-KB2A	RG405/U Sm86

SMP-K2等



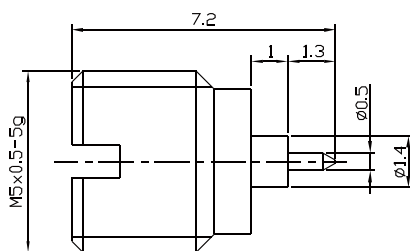
Type	$\phi D$	L	Cable type
SMP-K2	$\phi 1$	16.3	SFF-50-1 RG178/U
SMP-K3	$\phi 1.6$	16.8	SFF-50-1.5-1 RG316/U

SMP-KW2等



Type	$\phi D$	L	Cable type
SMP-KW2	$\phi 1$	12.9	SFF-50-1 RG178/U
SMP-KW3	$\phi 1.6$	13.4	SFF-50-1.5-1 RG316/U

SMP-CJYD1



SMP-CJFD1

