

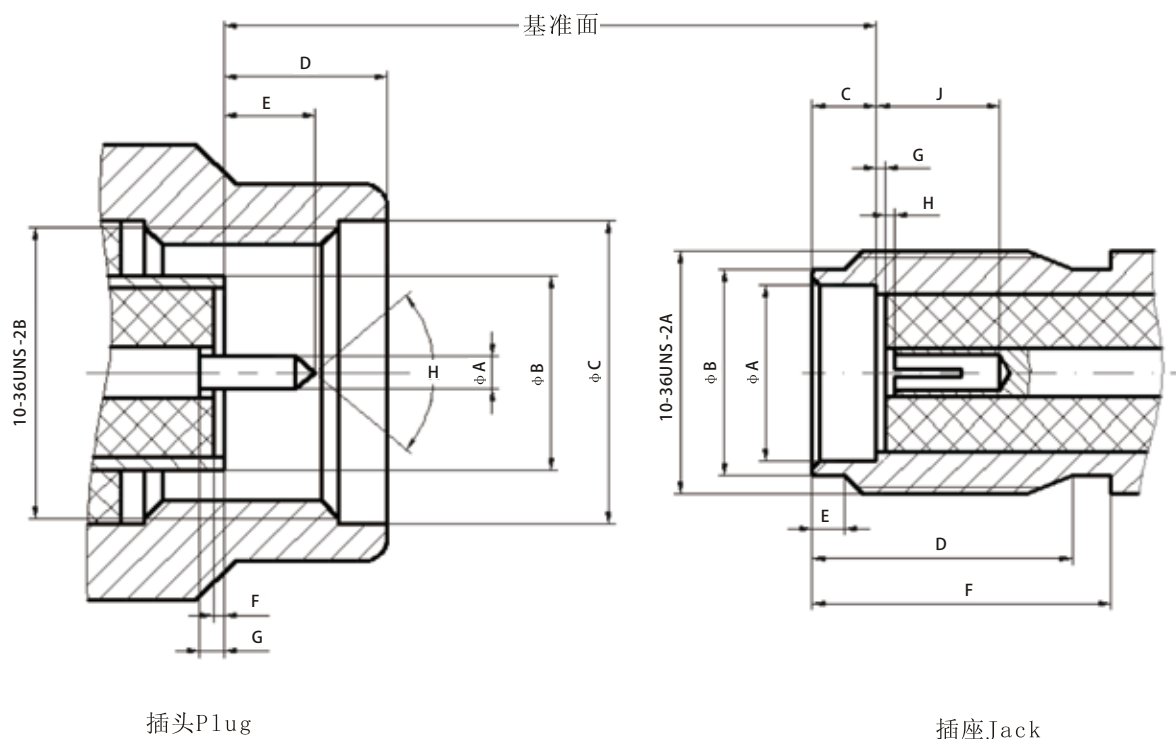
概述

SSMA系列射频同轴连接器是一种微型螺纹连接的射频同轴连接器，具有体积小、机械电气性能优越、工作频带宽、可靠性高等优点，其特性阻抗为 $50\ \Omega$ ，符合GJB 681A-2002、MIL-C-39012和IEC 60169-18国际标准，广泛用于移动通信设备及其它小型设备中。

主要技术特性

温度范围 Temperature range	$-55^{\circ}\text{C}\sim+155^{\circ}\text{C}$	绝缘电阻 Insulation resistance	$\geq 1000\text{M}\Omega$
特性阻抗 Characteristic impedance	$50\ \Omega$	介质耐压 Dielectric withstanding voltage	750V
频率范围 Frequency range	0GHz~40GHz	接触电阻 Contact resistance	中心导体 Center conductor $\leq 0.006\ \Omega$
			外导体 Outer conductor $\leq 0.002\ \Omega$
电压驻波比 VSWR	$\leq 1.07+0.02F$	寿命 Durability	500 Cycles

头部配合尺寸 INTERFACING DIMENSIONS

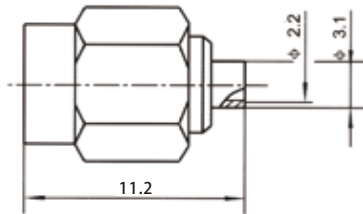


PLUG (mm)			JACK (mm)		
Symbol	MIN	MAX	Symbol	MIN	MAX
A	0.49	0.53	A	3.23	3.30
B	3.15	3.22	B	3.89	4.06
C	4.98	5.13	C	1.88	1.98
D	2.54	3.38	D	4.83	5.33
E	1.27	1.65	E	0.51	1.02
F	-0.05	0.18	F	5.84	-
G	0	0.41	G	-0.05	0.18
H	70°	95°	H	0	0.41
			J	1.91	-

电缆连接器



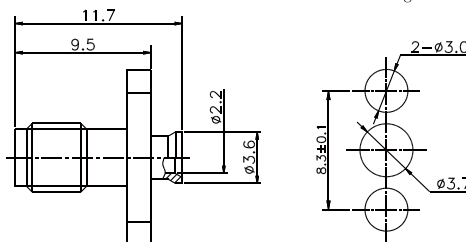
SSMA-JB2



Type	Cable type
SSMA-JB2	SFT-50-2-1



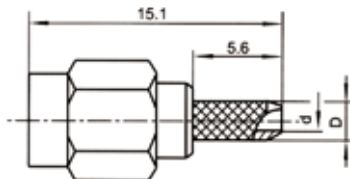
SSMA-KFB2



Type	Cable type
SSMA-KFB2	RG405/U SM86



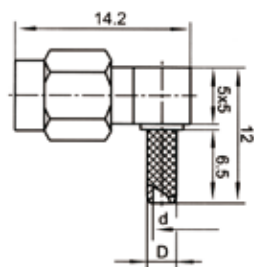
SSMA-J2等



Type	D	D	Cable type
SSMA-J2	φ1	φ2	SYV-50-1 SFF-50-1
SSMA-J3	φ1.6	φ2.7	SYV-50-2 SFF-50-1.5-1



SSMA-JW3等



Type	D	D	Cable type
SSMA-JW2	φ1	φ2	SYV-50-1 SFF-50-1
SSMA-JW3	φ1.6	φ2.7	SYV-50-2 SFF-50-1.5-1

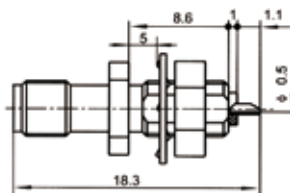
SSMA系列射频同轴连接器



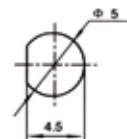
面板连接器



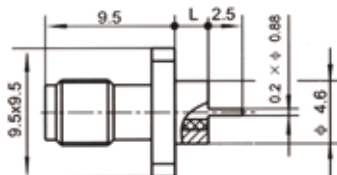
SSMA-KYD



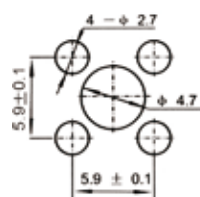
安装开孔尺寸
Mounting hole



SSMA-KFD1等



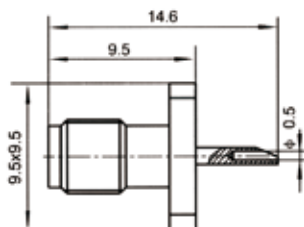
安装开孔尺寸
Mounting hole



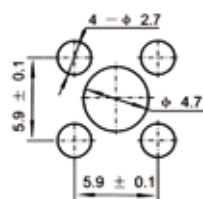
Type	L
SSMA-KFD1	2.4
SSMA-KFD2	3.2
SSMA-KFD3	4.8



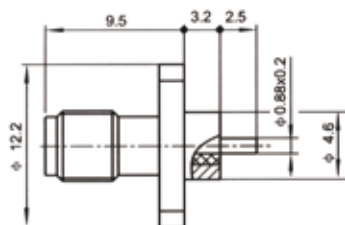
SSMA-KFD



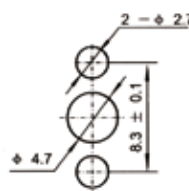
安装开孔尺寸
Mounting hole



SSMA-KFD4



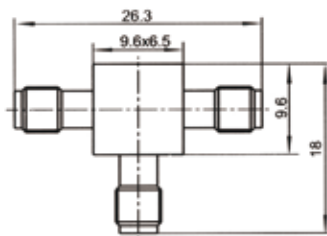
安装开孔尺寸
Mounting hole



系列内转接器



SSMA-KKK



SSMA-KK

