

# MMCX系列射频同轴连接器



## 概述

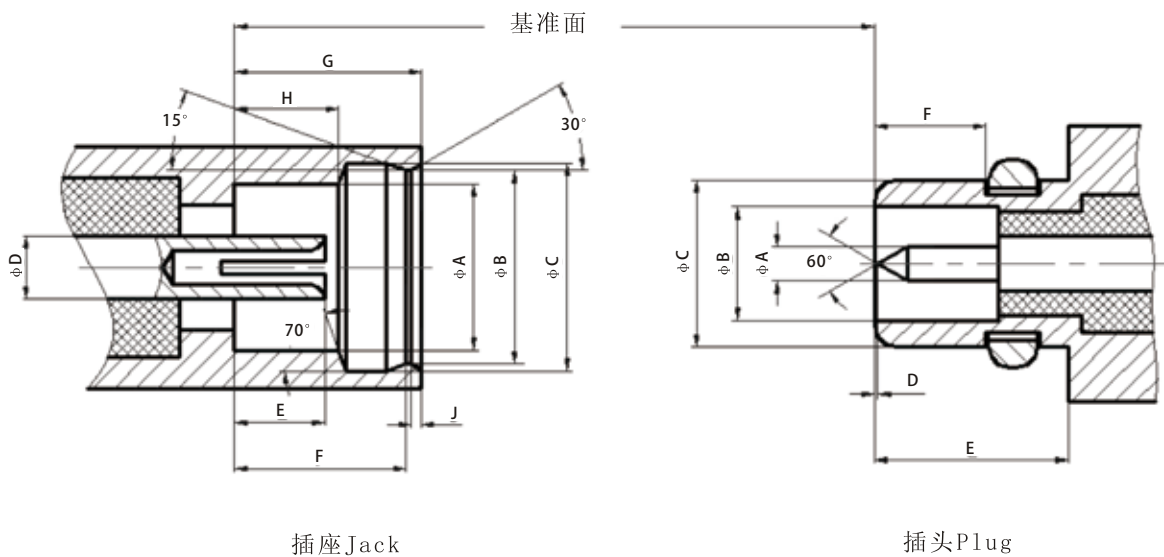
MMCX系列射频同轴连接器为推入式连接结构，外形比MCX更小巧，连接方便快捷。广泛应用于传感系统、定位系统、通信系统等设备中连接射频同轴电缆，其特性阻抗为50Ω。

MMCX系列射频同轴连接器适用标准为GJB 681A-2002、MIL-C-39012、CECC 22340。

## 主要技术特性

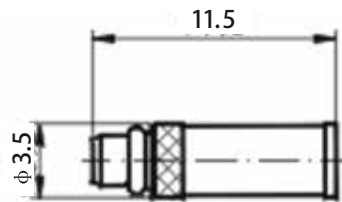
温度范围 Temperature range	-55℃~+155℃	绝缘电阻 Insulation resistance	≥1000MΩ
特性阻抗 Characteristic impedance	50Ω	介质耐压 Dielectric withstanding voltage	500V (rms)
频率范围 Frequency range	0GHz~6GHz	电压驻波比 VSWR	≤1.35
工作电压 Voltage rating	170V (rms)	插入损耗 Insertion loss	0.1dB at 1GHz
接触电阻 Contact resistance	中心导体 Center conductor	寿命 Durability	500 Cycles
	外导体 Outer conductor		

## 头部配合尺寸 INTERF ACE MA TING DIMENSIONS



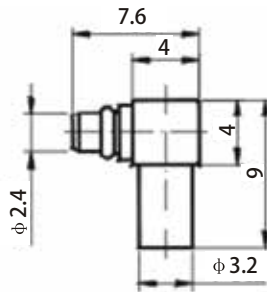
JACK (mm)			PLUG (mm)		
Symbol	MIN	MAX	Symbol	MIN	MAX
A	2.41	-	A	0.38	0.42
B	2.84	2.90	B	1.58	1.62
C	3.00	3.04	C	-	2.40
D	0.71	-	D	0.00	0.25
E	0.90	1.20	E	2.70	-
F	2.30	2.34	F	1.45	-
G	2.60	-			
H	1.57	1.63			
J	-	0.23			

## 电缆连接器



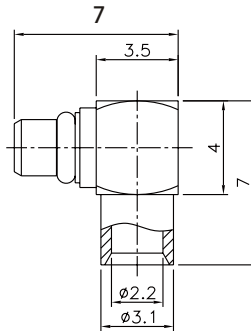
Type	Cable type
MMCX-JB2	RG405/U SM86

MMCX-JB2



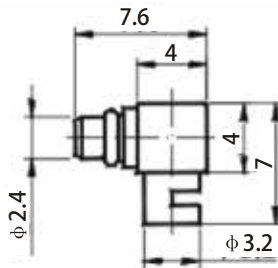
Type	Cable type
MMCX-JWB2	RG405/U SM86

MMCX-JWB2



Type	Cable type
MMCX-JWB2A	RG405/U SM86

MMCX-JWB2A



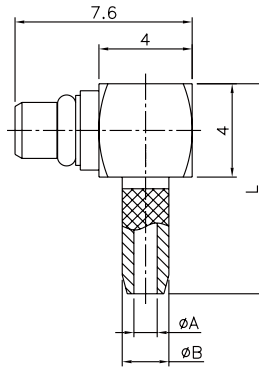
Type	Cable type
MMCX-JW2H	RG405/U SM86

MMCX-JW2H

# MMCX系列射频同轴连接器



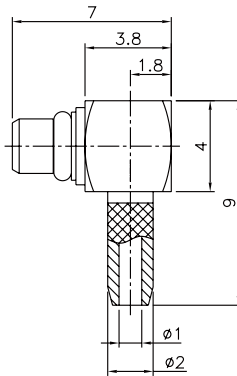
MMCX-JW2等



Type	A	B	L	Cable type
MMCX-JW2	1.0	2.0	9	SYV-50-1 SFF-50-1
MMCX-JW3	1.6	2.7	10	SYV-50-2-1 SFF-50-1.5-1



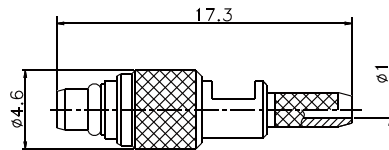
MMCX-JW2A



Type	Cable type
MMCX-JW2A	SYV-50-1 SFF-50-1



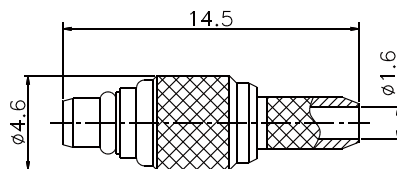
MMCX-J2



Type	Cable type
MMCX-J2	SFF-50-1 RG178B/U



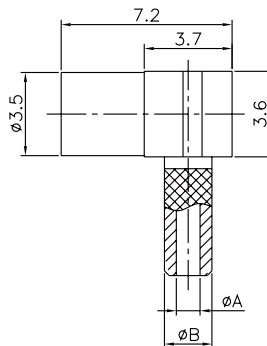
MMCX-J3



Type	Cable type
MMCX-J3	SFF-50-1.5-1 RG316/U



MMCX-KW2等

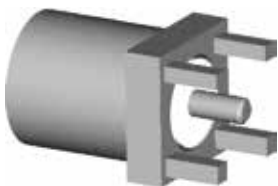
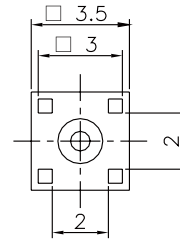
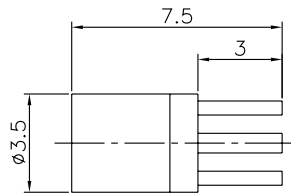


Type	A	B	Cable type
MMCX-KW2	1.0	2.0	SYV-50-1 SFF-50-1
MMCX-KW3	1.6	2.7	SYV-50-2-1 SFF-50-1.5-1

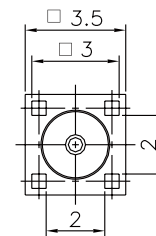
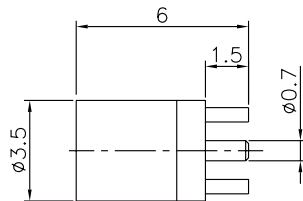
## 印制电路板连接器



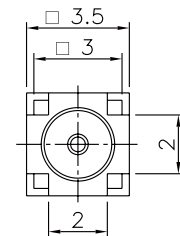
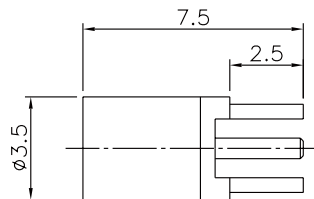
MMCX-KHD4



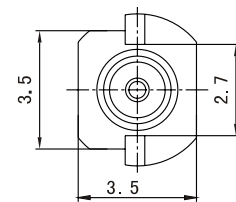
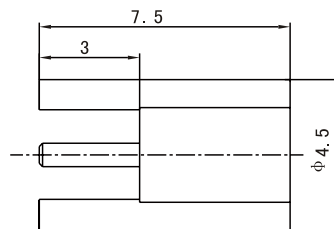
MMCX-KHD5



MMCX-KHD6



MMCX-KHTC



MMCX-KWHD

